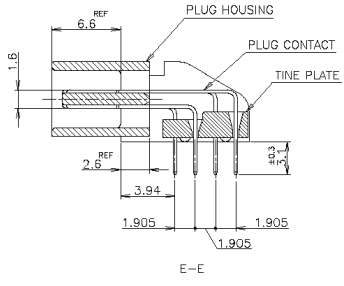
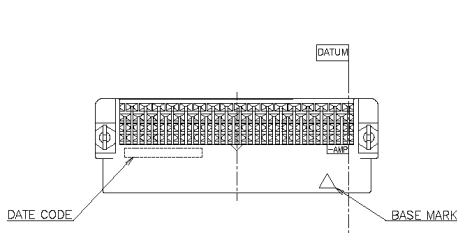
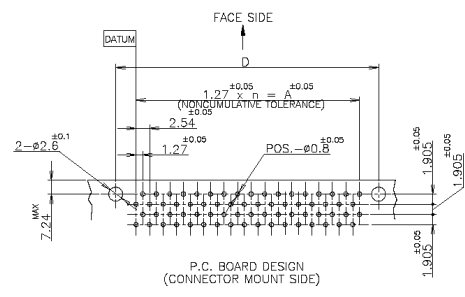
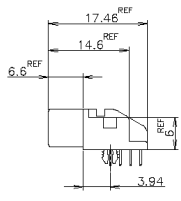
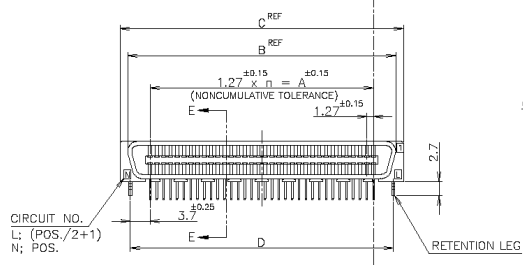


THIS DRAWING IS UNPUBLISHED. RELEASED FOR PUBLICATION AUG. 1983.
 © COPYRIGHT 1983 BY TYCO ELECTRONICS CORPORATION. ALL RIGHTS RESERVED.

REV	DESCRIPTION	DATE	BY	APP'D
0	NEW RELEASE FJBD-0873-04	10AUG2004	J.Z	I.E



- 1 NUMBER "n" IS COUNTED FROM DATUM (CIRCUIT NO.1 IS "AMP" MARK SIDE.)
- △ MATERIAL: HOUSING, 66 NYLON (GF) UL 94V-0, BLACK.
- : CONTACT, PHOSPHOR BRONZE.
- : RETENTION LEG; BRASS.
- △ FINISH: CONTACT; Au AT CONTACT AREA (SEE TABLE), TIN AT TINE, OVER NI.
- RETENTION LEG; TIN UNDER NI.
- 4 SIF-200 ALL OVER.



4-	-1	120	59	74.93	83.27	86.13	82.33
3-	-9	80	39	49.53	57.87	60.73	56.93
3-5179275-8	0.0005	68	53	41.91	50.25	53.11	49.31
PART NO.	Au PLATE	POS.	n	A	B	C	D

LEAD FREE

THIS DRAWING IS A CONTROLLED DOCUMENT. DWN: Juirze Zhu 10AUG2004
 DRN: Steven Yoo 10AUG2004
 DTE: Ikup Enomoto 10AUG2004

Tyco Electronics Tyco Electronics AMP K.K. Kawasaki, Japan

AMP CHAMP .050 CONNECTOR (B-T-B)
 PLUG CONNECTOR (HORIZONTAL WITH RETENTION LEG)

SIZE: A2 DATE CODE: 00779 DRAWING NO: C-5179275 RESTRICTED TO: NTS

CUSTOMER DRAWING SCALE: NTS SHEET 1 OF 1 REV 0

5179275