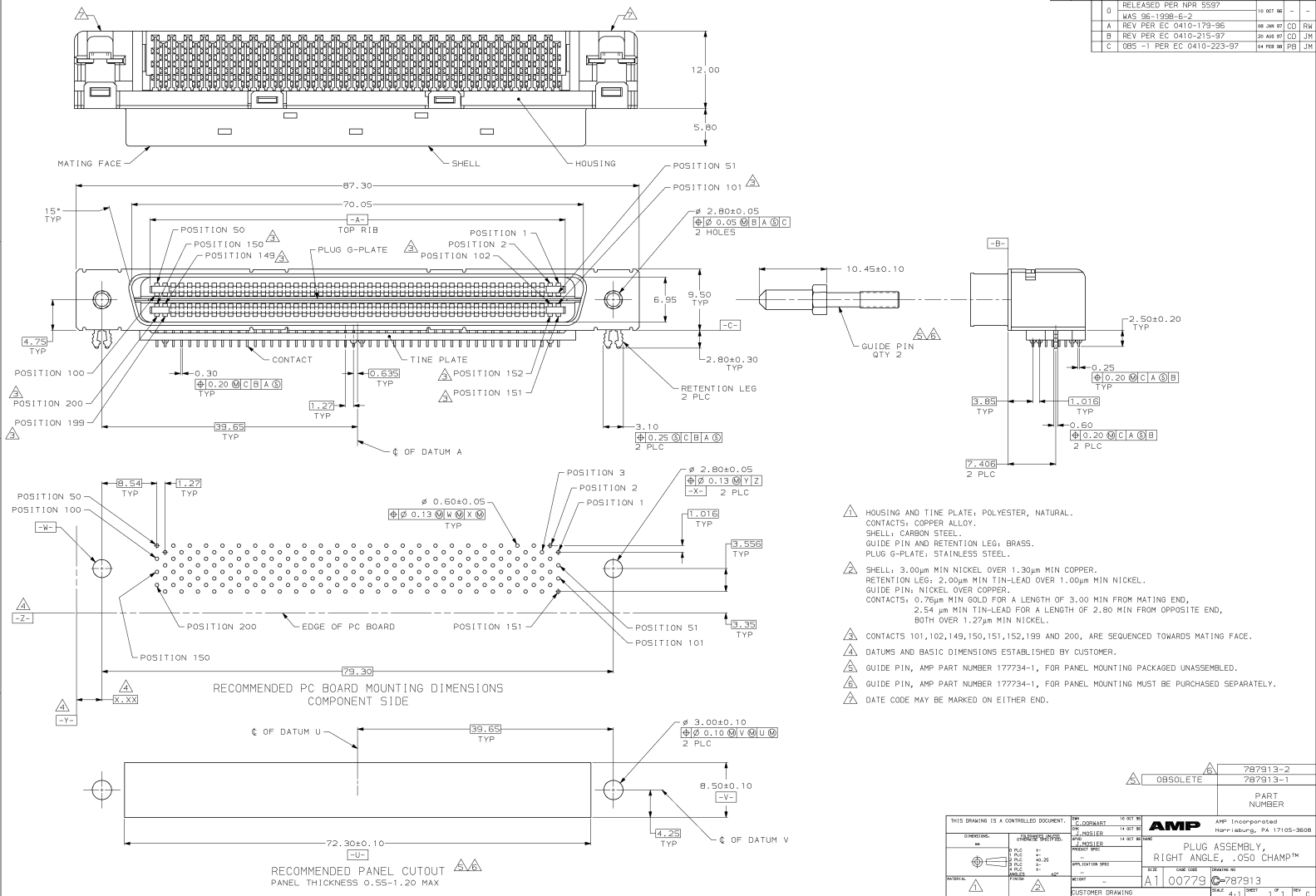


THIS DRAWING IS UNCONTROLLED  
 REVISIONS FOR FABRICATION  
 BY AMP INCORPORATED. ALL REVISIONS NUMBERED

REV	DATE	DESCRIPTION	BY	CHKD	APP'D
0	10-05-96	RELEASED PER NPR 5597			
A	04-10-96	REV PER EC 0410-179-96	CD	JM	RM
B	20-08-97	REV PER EC 0410-215-97	CD	JM	JM
C	04-FEB-98	DBS -1 PER EC 0410-223-97	PB	JM	JM



- △ HOUSING AND TINE PLATE: POLYESTER, NATURAL.
- △ CONTACTS: COPPER ALLOY.
- △ SHELL: CARBON STEEL.
- △ GUIDE PIN AND RETENTION LEG: BRASS.
- △ PLUG G-PLATE: STAINLESS STEEL.
- △ SHELL: 3.00µm MIN NICKEL OVER 1.30µm MIN COPPER.
- △ RETENTION LEG: 2.00µm MIN TIN-LEAD OVER 1.00µm MIN NICKEL.
- △ GUIDE PIN: NICKEL OVER COPPER.
- △ CONTACTS: 0.76µm MIN GOLD FOR A LENGTH OF 3.00 MIN FROM MATING END, 2.54 µm MIN TIN-LEAD FOR A LENGTH OF 2.80 MIN FROM OPPOSITE END, BOTH OVER 1.27µm MIN NICKEL.
- △ CONTACTS 101,102,149,150,151,152,199 AND 200, ARE SEQUENCED TOWARDS MATING FACE.
- △ DATUMS AND BASIC DIMENSIONS ESTABLISHED BY CUSTOMER.
- △ GUIDE PIN, AMP PART NUMBER 177734-1, FOR PANEL MOUNTING PACKAGED UNASSEMBLED.
- △ GUIDE PIN, AMP PART NUMBER 177734-1, FOR PANEL MOUNTING MUST BE PURCHASED SEPARATELY.
- △ DATE CODE MAY BE MARKED ON EITHER END.

787913-2	787913-1
PART NUMBER	

THIS DRAWING IS A CONTROLLED DOCUMENT.		DATE	14 00 79	REV	01
REV	DATE	DESCRIPTION	BY	CHKD	APP'D
0	14 00 79	RELEASED PER NPR 5597			
A	04 10 96	REV PER EC 0410-179-96	CD	JM	RM
B	20 08 97	REV PER EC 0410-215-97	CD	JM	JM
C	04 FEB 98	DBS -1 PER EC 0410-223-97	PB	JM	JM
CUSTOMER DRAWING		DATE CODE	A1100779	REV	01