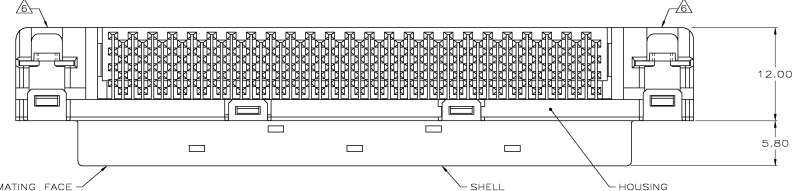
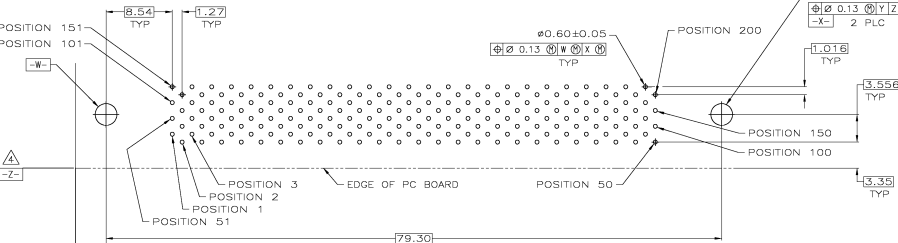
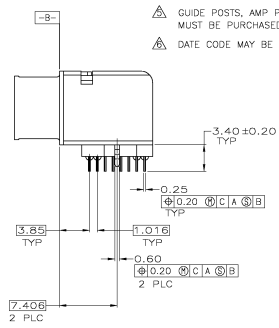
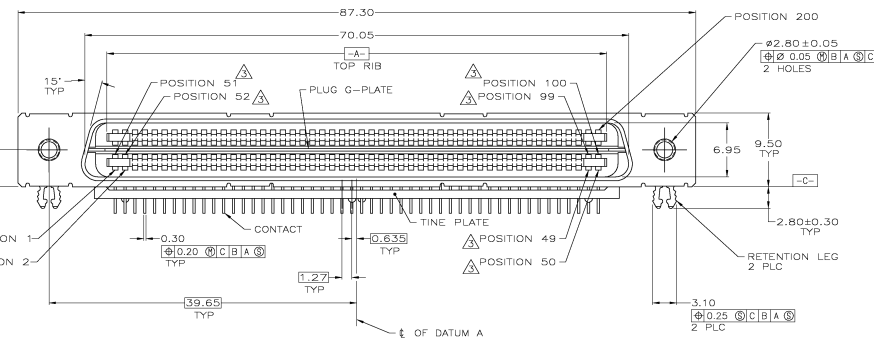


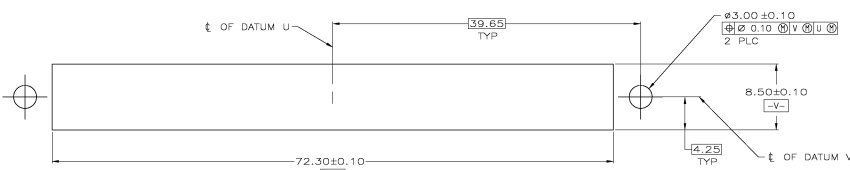
REV	DATE	DESCRIPTION	BY	CHK	APP
00					
0		RELEASED PER EC 0513-0440-04	12-07-04	GA	JG



- ⚠ HOUSING AND TINE PLATE: POLYESTER, NATURAL.
CONTACTS: COPPER ALLOY.
SHELL: CARBON STEEL.
RETENTION LEG: BRASS.
PLUG G-PLATE: STAINLESS STEEL.
- ⚠ SHELL: 3.00µm MIN NICKEL OVER 1.30µm MIN COPPER.
RETENTION LEG: 2.00µm MIN TIN OVER 1.00µm MIN NICKEL.
CONTACTS: 0.76µm MIN GOLD FOR A LENGTH OF 3.00 MIN FROM MATING END,
2.54 µm MIN TIN FOR A LENGTH OF 2.80 MIN FROM OPPOSITE END,
BOTH OVER 1.27µm MIN NICKEL.
- ⚠ CONTACTS 1,2,49,50,51,52,99 AMD 100, ARE SEQUENCED TOWARDS MATING FACE.
- ⚠ DATUMS AND BASIC DIMENSIONS ESTABLISHED BY CUSTOMER.
- ⚠ GUIDE POSTS, AMP PART NUMBER 177734-1, FOR PANEL MOUNTING
MUST BE PURCHASED SEPARATELY.
- ⚠ DATE CODE MAY BE MARKED ON EITHER END.



RECOMMENDED PC BOARD MOUNTING DIMENSIONS
 COMPONENT SIDE



RECOMMENDED PANEL CUTOUT
 PANEL THICKNESS 0.55-1.20 MAX

Copyright 2005
TYCO ELECTRONICS CORP
ALL RIGHTS RESERVED

5787885-1
 PART NUMBER

THIS DRAWING IS A CONTROLLED DOCUMENT		DATE: 12-07-04	REV: 00	BY: GA	CHK: JG	APP: JG
DRAWN BY: JG		DATE: 12-07-04	REV: 00	BY: GA	CHK: JG	APP: JG
CHECKED BY: JG		DATE: 12-07-04	REV: 00	BY: GA	CHK: JG	APP: JG
APPROVED BY: JG		DATE: 12-07-04	REV: 00	BY: GA	CHK: JG	APP: JG
MATERIAL:		DATE CODE:	PANEL NO:	SEE: A1	DATE CODE: 12-07-04	REV: 00
PART:		WEIGHT:	REV: 00	DATE CODE: 12-07-04	REV: 00	REV: 00
CUSTOMER DRAWING:		REV: 00	DATE CODE: 12-07-04	REV: 00	DATE CODE: 12-07-04	REV: 00