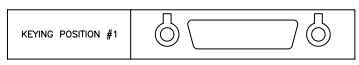
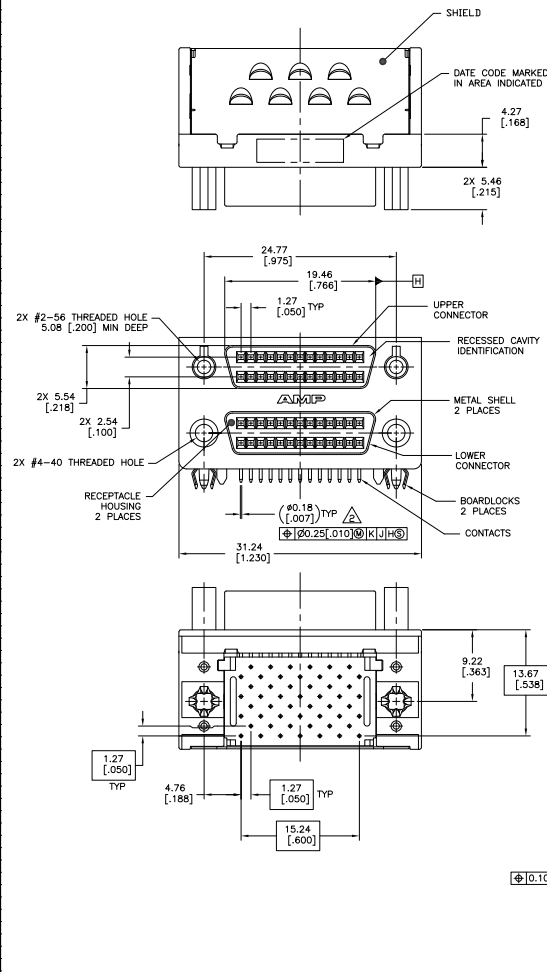
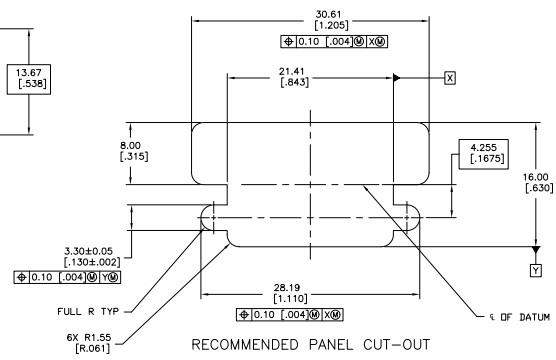
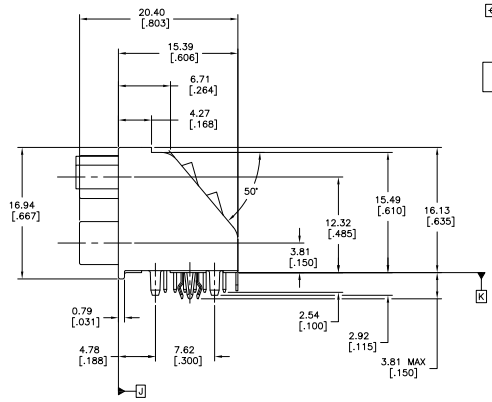


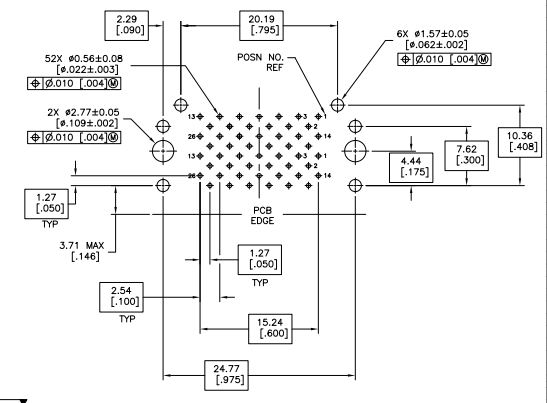
REV	DATE	DESCRIPTION	BY	APP
00				
F		REVISED PER EDD-10-013809		



KEYING POSITION CHART  
 NOT TO SCALE



P.C. BOARD MOUNTING DIMENSIONS  
 CONNECTOR SIDE



- CONTACT FINISH: GOLD FLASH OVER PALLADIUM-NICKEL PLATE, 0.00076 [0.00030] MIN TOTAL ON MATING SURFACES, 0.0038 [0.00150] MIN TIN-LEAD PLATE ON SOLDER-TAILS, 0.00127 [0.00050] MIN NICKEL UNDERPLATE ON ENTIRE CONTACT. -OR- 0.00076 [0.00030] MIN GOLD PLATE ON MATING SURFACES, 0.0038 [0.00150] MIN TIN-LEAD PLATE ON SOLDER-TAILS, 0.00127 [0.00050] MIN NICKEL UNDERPLATE ON ENTIRE CONTACT.
- POSITION TOLERANCE APPLIES AT TIP ONLY.
- MATERIAL: CONTACTS - PHOSPHOR BRONZE, RECEPTACLE HOUSING - UL 94V-0 RATED LCP, COLOR BLACK, BRACKET - ZINC, METAL SHELL - CARBON STEEL, BOARDLOCKS - COPPER ALLOY, SHIELD - PHOSPHOR BRONZE.
- METAL SHELL FINISH: 0.00508-0.01016 [0.00020-0.00400] TIN OVER 0.00127-0.00254 [0.00050-0.00100] COPPER.
- BRACKET FINISH: 0.00508-0.01016 [0.00020-0.00400] TIN-LEAD OVER 0.00508-0.00762 [0.00200-0.00300] COPPER.
- BOARD LOCK FINISH: 0.00508-0.01016 [0.00020-0.00400] TIN-LEAD OVER 0.00127-0.00254 [0.00050-0.00100] NICKEL.
- SHIELD FINISH: 0.00254-0.00635 [0.00100-0.00250] TIN.

1	UNKEYED	750821-1
UPPER CONNECTOR	LOWER CONNECTOR	PART NUMBER
KEYING POSITION		

THIS DRAWING IS A CONTROLLED DOCUMENT.

INCHES	DECIMALS	FRACTIONS	OTHER
0.125	0.001	1/64	
0.005	0.0001	1/160	
0.001	0.00001	1/1000	

DATE: 11-13-08  
 DRAWN BY: J. B. BUSH  
 CHECKED BY: J. B. BUSH  
 PART NO: 108-1366  
 REV: 1  
 SIZE: 114-40036  
 CUSTOMER DRAWING: A100779  
 Q=750821