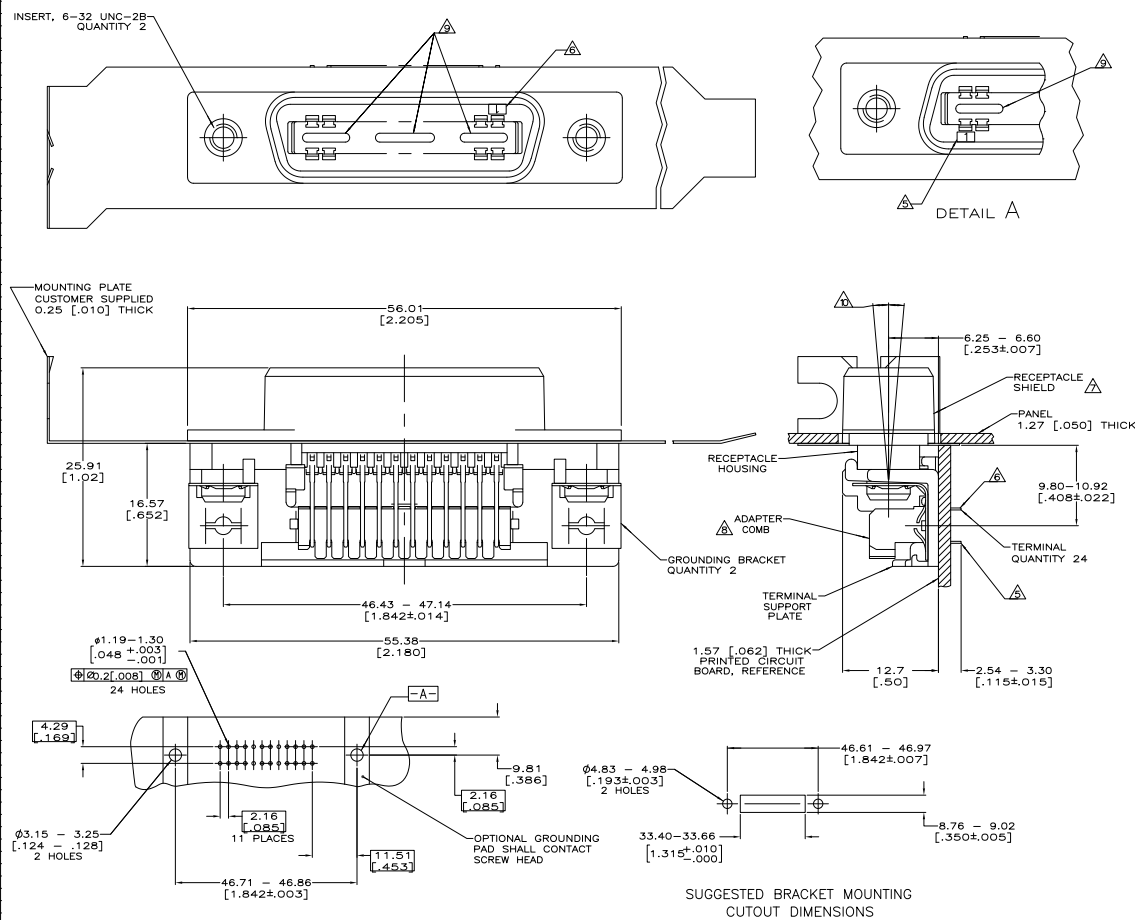


THIS DRAWING IS UNPUBLISHED
 ALL RIGHTS RESERVED
 © 2008 TTI ELECTRONICS CORPORATION

REV	DATE	DESCRIPTION	BY	CHK	APP
00					
1		REVISED FOR ECO-08-007327			



- △ MATERIAL:
 SUPPORT PLATE, HOUSING & ADAPTER COMB - POLYESTER, BLACK.
 RECEPTACLE SHIELD - NICKEL OVER COPPER PLATED ZINC.
 TERMINALS - HIGH STRENGTH COPPER ALLOY PLATED WITH EITHER
 0.76µm [.000030] MIN GOLD PLATE OR GOLD FLASH OVER PALLADIUM
 NICKEL PLATE, 0.76µm [.000030] MIN TOTAL ON MATING SURFACE.
 3.05µm [.000120] MIN TIN-LEAD PLATE ON TAILS, ALL OVER 1.27µm
 [.000050] MIN NICKEL UNDERPLATE OVER ENTIRE TERMINAL.
 GROUND BRACKET - ZINC PLATED CARBON STEEL.
- THE CONTACT SURFACES OF THE TERMINALS ARE COATED WITH LUBRICANT.
 - CENTER-TO-CENTER SPACING OF TERMINALS IS 2.16 [.085] NOMINAL.
 - DIMENSIONS ARE MAXIMUM UNLESS OTHERWISE SPECIFIED.
 - TERMINAL 1 LOCATED IN THIS ROW FOR STANDARD ORIENTATION.
 - TERMINAL 1 LOCATED IN THIS ROW FOR REVERSE ORIENTATION.
 - SHIELD SHIPPED NOT ASSEMBLED.
 - ADAPTER COMB SHALL BE PARTIALLY RETRACTED BEFORE INSERTING CONNECTOR INTO PRINTED CIRCUIT BOARD.
 - THIS FEATURE IS A CORED AREA AND IS OPTIONAL ON PART.
 - CONNECTOR MATING FACE MAY VARY UP TO 5 DEGREES IN EITHER DIRECTION FROM NOMINAL.

SUGGESTED PRINTED CIRCUIT BOARD MOUNTING DIMENSIONS
 SCALE 2:1

SUGGESTED BRACKET MOUNTING CUTOUT DIMENSIONS
 SCALE 1:1

THIS DRAWING IS A CONTROLLED DOCUMENT.		REV	DATE	DESCRIPTION	BY	CHK	APP
1							

DESCRIPTION	ORIENTATION	STANDARD	PART NUMBER
RECEPTACLE ASSEMBLY, 24 POSITION, RIGHT ANGLE, SHIELDED, LOW PROFILE, WITH GROUNDING BRACKET, CHAMP	REVERSE	555139-2	555139-1

REV	DATE	DESCRIPTION	BY	CHK	APP
1					