

4

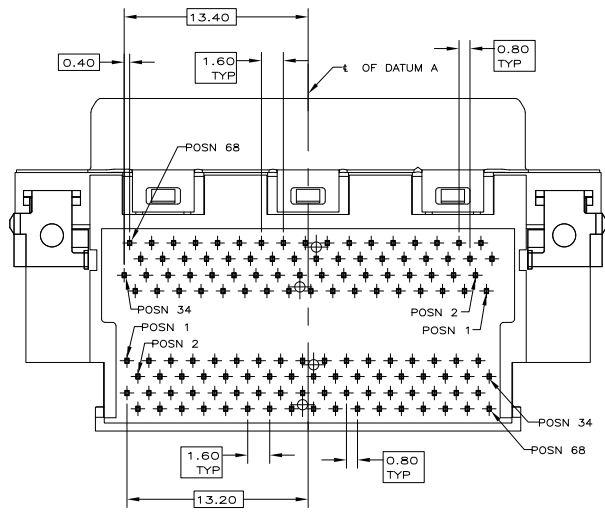
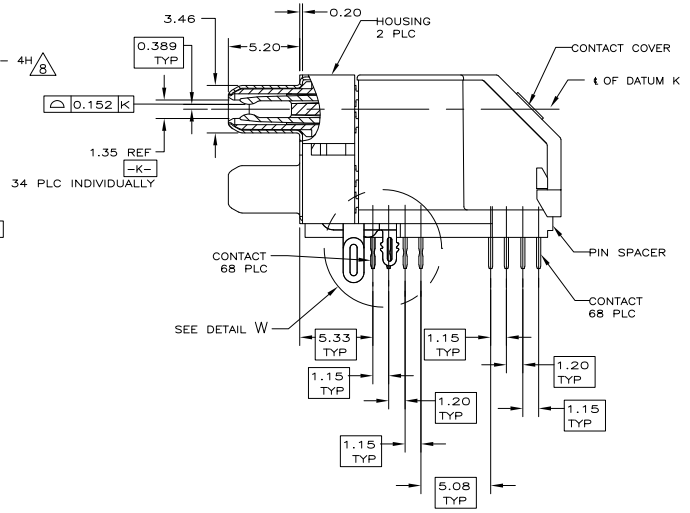
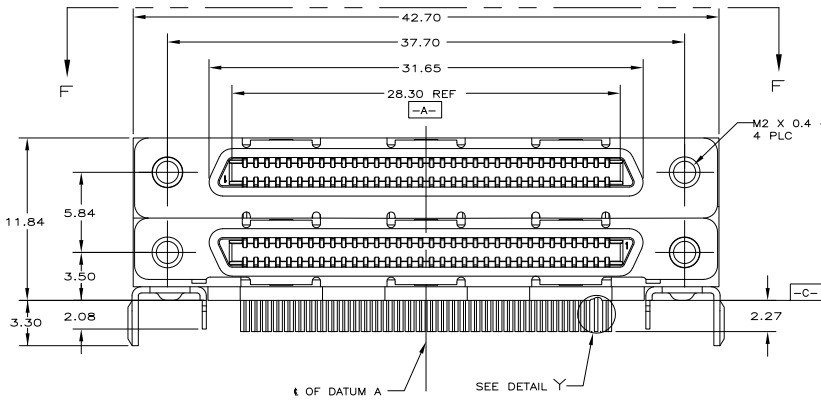
3

2

1

THIS DRAWING IS UNPUBLISHED. RELEASED FOR PUBLICATION. 20--  
 © COPYRIGHT 20-- BY TYCO ELECTRONICS CORPORATION. ALL RIGHTS RESERVED.

LOC	DIST	REVISIONS		DATE	BY	APPD
GP	00	F	LR			
		P		REVISED PER ECO-09-001695	7FEB2009	ZMR/EDB



REMARKS	1364306-1
	PART NUMBER

THIS DRAWING IS A CONTROLLED DOCUMENT.		DRN	T. SHUEY	ORMDRGS		Tyco Electronics Corporation	
		CHK	J. GERACE	ORMDRGS		Harrisburg, PA 17105-3608	
		APPD	M. WALMSLEY	ORMDRGS	NAME	RECEPTACLE ASSEMBLY,	
		PRODUCT SPEC	108-1471-1			68 POSITION, STACKED, COVERED CONTACTS,	
		APPLICATION SPEC	114-6057		SIZE	CAGE CODE	ISSUING NO.
		WEIGHT	-		A2	00779	C-1364306
		CUSTOMER DRAWING			SCALE	5:1	SHEET 1 of 3
							REV P

AMP 1471-9 REV 31MAR2000

1364306

A

4

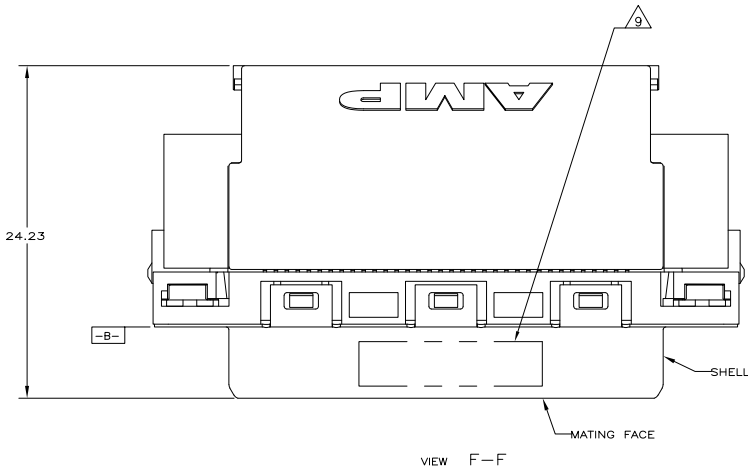
3

2

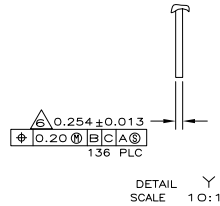
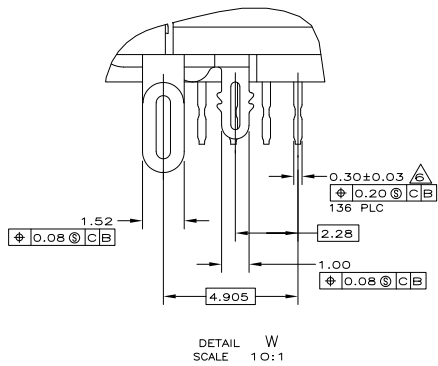
1

THIS DRAWING IS UNPUBLISHED. RELEASED FOR PUBLICATION. 20--  
 © COPYRIGHT 20-- BY TYCO ELECTRONICS CORPORATION. ALL RIGHTS RESERVED.

LOC	DIST	REVISIONS		
F	LN	DESCRIPTION	DATE	APPD
GP	00	SEE SHEET 1	-	-



- ▲ MOLDED PARTS: THERMOPLASTIC, BLACK, UL 94V-0 RATED.  
SHELL: CARBON STEEL.  
CONTACTS: PHOSPHOR BRONZE.  
BRACKETS: STEEL.
- ▲ SHELL: 5.08µm MIN NICKEL OVER 2.54µm MIN COPPER.  
CONTACTS: 0.76µm MIN GOLD ON MATING END, 3.75µm MIN TIN-LEAD  
ON SOLDER TAILS, BOTH OVER 1.27µm MIN NICKEL ON ENTIRE CONTACT.  
BRACKETS: TIN PLATED.
- ▲ CONTACTS DESIGNED FOR USE ON 1.60±0.15 THICK PC BOARD WITH PLATED THRU  
MOUNTING HOLES.
- ▲ RECEPTACLE ASSEMBLY DESIGNED FOR USE WITH 1.12±0.08 THICK PANEL.
- ▲ DATUMS AND DIMENSIONS ESTABLISHED BY CUSTOMER.
- ▲ POSITION TOLERANCE APPLIES AT CONTACT TIP ONLY.
- ▲ OFFSET DIMENSION APPLIES TO LOWER FOOTPRINT ONLY.
- ▲ MAXIMUM TORQUE 0.45 M-N.
- ▲ DATE CODE MARKED IN APPROXIMATE AREA SHOWN.



THIS DRAWING IS A CONTROLLED DOCUMENT.		DRN T. SHUEY	ORNMARCS	Tyco Electronics Corporation Harrisburg, PA 17105-3608
DIMENSIONS: mm		CHK J. GERACE	ORNMARCS	
TOLERANCES UNLESS OTHERWISE SPECIFIED:		APPD M. WALMSLEY	ORNMARCS	NAME
0 PLC	±	APPLICATION SPEC		RECEPTACLE ASSEMBLY, 68 POSITION, STACKED, COVERED CONTACTS, RIGHT ANGLE, CHAMP 0.8mm
1 PLC	±	WEIGHT		SIZE
2 PLC	± 0.13	FINISH		CAGE CODE
3 PLC	±	MATERIAL		ISSUING NO
4 PLC	± 1°	CUSTOMER DRAWING		RESTRICTED TO
				A2 00779 C-1364306
				SCALE 5:1 SHEET 2 of 3 REV P

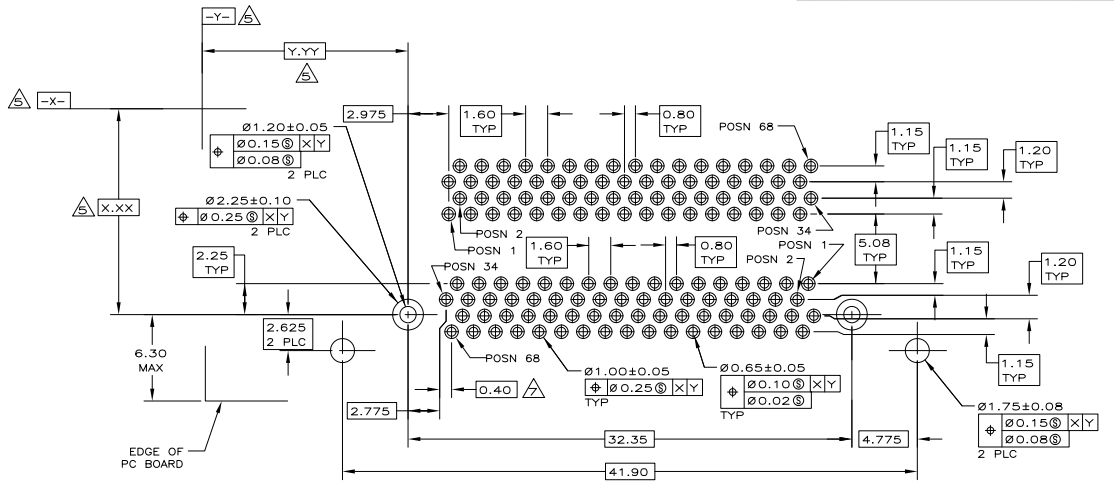
AMP 1471-9 REV 31MAR2000

1364306

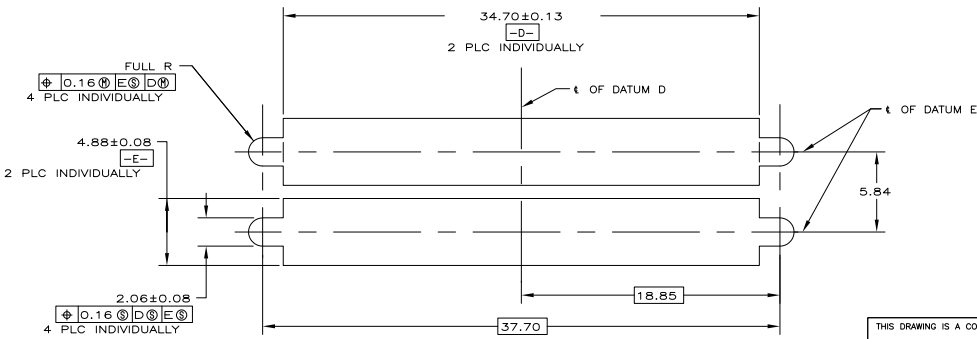
A

THIS DRAWING IS UNPUBLISHED. RELEASED FOR PUBLICATION BY TYCO ELECTRONICS CORPORATION. ALL RIGHTS RESERVED.

LOC	DIST	REV	DESCRIPTION	DATE	BY	APPD
GP	00	F	LR			
			SEE SHEET 1			



PC BOARD MOUNTING DIMENSIONS  $\Delta$   
SCALE 5:1



PANEL CUT-OUT DIMENSIONS  $\Delta$   
SCALE 5:1

THIS DRAWING IS A CONTROLLED DOCUMENT.		DRW: T. SHUELY	ORMDRGS	Tyco Electronics Corporation
DIMENSIONS: mm		CHK: J. GERACE	ORMDRGS	Harrisburg, PA 17105-3608
TOLERANCES UNLESS OTHERWISE SPECIFIED:		APPD: M. WALMSLEY	ORMDRGS	
0 PLC	$\pm .01$	NAME:		RECEPTACLE ASSEMBLY, 68 POSITION, STACKED, COVERED CONTACTS, RIGHT ANGLE, CHAMP 0.8mm
1 PLC	$\pm .015$	APPLICATION SPEC:		
2 PLC	$\pm .013$	WEIGHT:		
3 PLC	$\pm .01$	FINISH:		
4 PLC	$\pm .01$			
ANGLES	$\pm .1^\circ$	CAGE CODE (ISSUING NO):	A2 00779	C-1364306
		RESTRICTED TO:		
		CUSTOMER DRAWING	SCALE 5:1	SHEET 3 of 3