

4

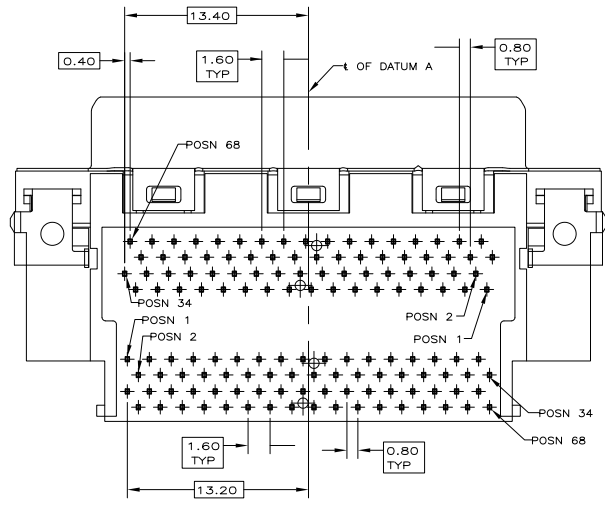
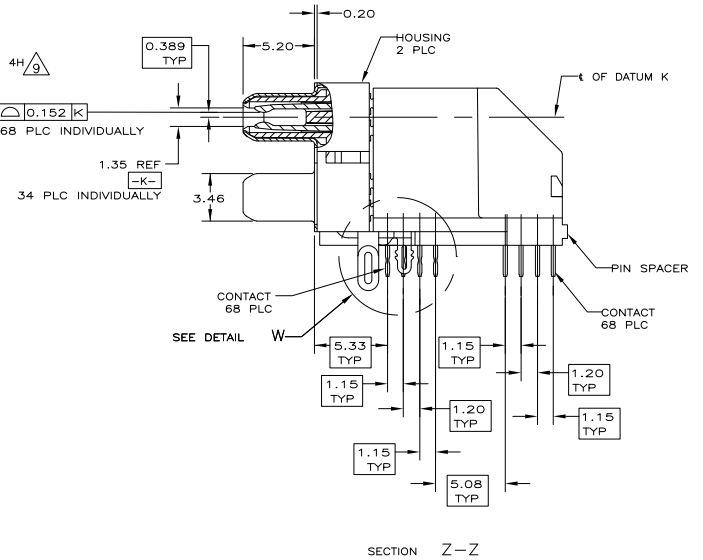
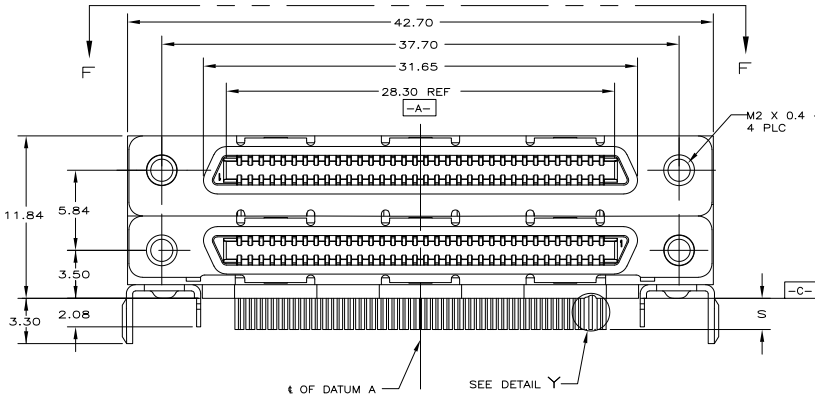
3

2

1

THIS DRAWING IS UNPUBLISHED. RELEASED FOR PUBLICATION.
 © COPYRIGHT BY TYCO ELECTRONICS CORPORATION. ALL INTERNATIONAL RIGHTS RESERVED.

LOC	DIST	REVISIONS		DATE	BY	APPD
GP	00	F	LR			
		T		REVISED PER ECO-09-001695	7FEB2009	ZMR/EDB



REMARKS	REV	DATE
3.55	787962-2	
2.27	787962-1	
S	PART NUMBER	

THIS DRAWING IS A CONTROLLED DOCUMENT.

DIMENSIONS: mm TOLERANCES UNLESS OTHERWISE SPECIFIED: 0 PLC ± - 1 PLC ± - 2 PLC ± 0.13 3 PLC ± - 4 PLC ± - ANGLES ± 1° FINISH	DWG: T. SHUEY CHK: J. GERACE JAPD: M. WALMSLEY APPLICATION SPEC: WEIGHT: MATERIAL:	ORNARDS: Tyco Electronics Corporation HARRISBURG, PA 17105-3608 RECEPTACLE ASSEMBLY, 68 POSITION, STACKED, RIGHT ANGLE, CHAMP 0.8mm SIZE: A2 CASE CODE: 00779 DRAWING NO: 787962 SCALE: 5:1 SHEET: 1 of 3 REV: T
---	---	--

CUSTOMER DRAWING

4

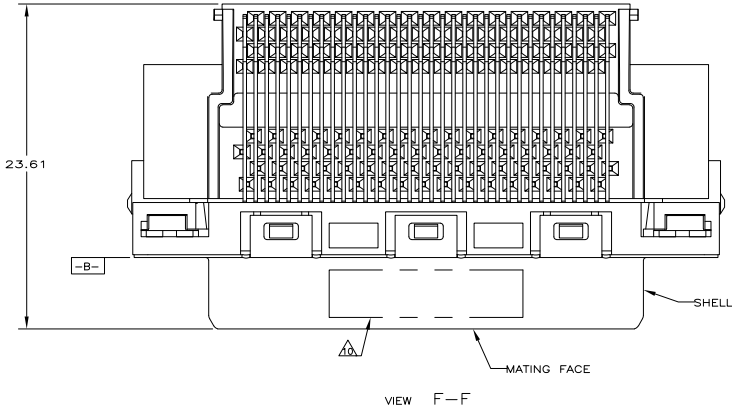
3

2

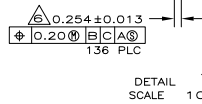
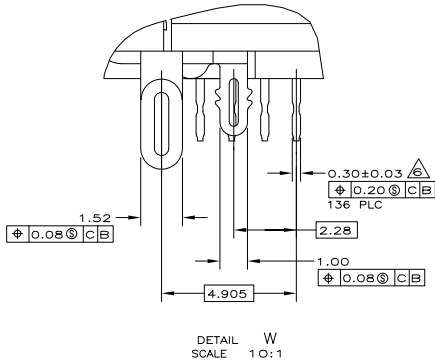
1

THIS DRAWING IS UNPUBLISHED. RELEASED FOR PUBLICATION.
 © COPYRIGHT BY TYCO ELECTRONICS CORPORATION. ALL INTERNATIONAL RIGHTS RESERVED.

LOC	DIST	REVISIONS		
F	LNK	DESCRIPTION	DATE	BY
GP	00	SEE SHEET 1	-	-



- 1 MOLDING PARTS: THERMOPLASTIC, BLACK, UL 94V-0 RATED.
SHELL: CARBON STEEL.
CONTACTS: PHOSPHOR BRONZE.
BRACKETS: STEEL.
- 2 SHELL: 5.08µm MIN NICKEL OVER 2.54µm MIN COPPER.
CONTACTS: 0.76µm MIN GOLD ON MATING END, 3.75µm MIN TIN-LEAD ON SOLDER TAILS, BOTH OVER 1.27µm MIN NICKEL OVER ENTIRE CONTACT.
BRACKETS: TIN PLATED.
- 3 CONTACTS DESIGNED FOR USE ON 1.60±0.15 THICK PC BOARD WITH PLATED THRU MOUNTING HOLES.
- 4 RECEPTACLE ASSEMBLY DESIGNED FOR USE WITH 1.12±0.08 THICK PANEL.
- 5 DATUMS AND DIMENSIONS ESTABLISHED BY CUSTOMER.
- 6 POSITION TOLERANCE APPLIES AT CONTACT TIP ONLY.
- 7 OFFSET DIMENSION APPLIES TO LOWER FOOTPRINT ONLY.
- 8 CONTACTS DESIGNED FOR USE ON 2.35±0.15 THICK PC BOARD WITH PLATED THRU MOUNTING HOLES.
- 9 MAXIMUM TORQUE 0.45 N-M.
- 10 DATE CODE MARKED IN APPROXIMATE AREA SHOWN.



THIS DRAWING IS A CONTROLLED DOCUMENT.		DRN T. SHUEY	ORMDRGS	Tyco Electronics Corporation Harrisburg, PA 17105-3608														
DIMENSIONS: mm		CHK J. GERACE	ORMDRGS															
<table border="1"> <thead> <tr> <th>TOLERANCES UNLESS OTHERWISE SPECIFIED:</th> <th>UNIT</th> </tr> </thead> <tbody> <tr><td>0 PLC</td><td>± .005</td></tr> <tr><td>1 PLC</td><td>± .002</td></tr> <tr><td>2 PLC</td><td>± .0015</td></tr> <tr><td>3 PLC</td><td>± .001</td></tr> <tr><td>4 PLC</td><td>± .0005</td></tr> <tr><td>ANGLES</td><td>± 1°</td></tr> </tbody> </table>		TOLERANCES UNLESS OTHERWISE SPECIFIED:	UNIT	0 PLC	± .005	1 PLC	± .002	2 PLC	± .0015	3 PLC	± .001	4 PLC	± .0005	ANGLES	± 1°	APP M. WALMSLEY	ORMDRGS	RECEPTACLE ASSEMBLY, 68 POSITION, STACKED, RIGHT ANGLE, CHAMP 0.8mm
TOLERANCES UNLESS OTHERWISE SPECIFIED:	UNIT																	
0 PLC	± .005																	
1 PLC	± .002																	
2 PLC	± .0015																	
3 PLC	± .001																	
4 PLC	± .0005																	
ANGLES	± 1°																	
MATERIAL FINISH		APPC ---	ORMDRGS	SIZE CASE CODE (DRAWING NO) A2 00779 C=787962														
CUSTOMER DRAWING		WEIGHT ---	ORMDRGS	RESTRICTED TO SCALE 5:1 SHEET 2 of 3 REV T														

4

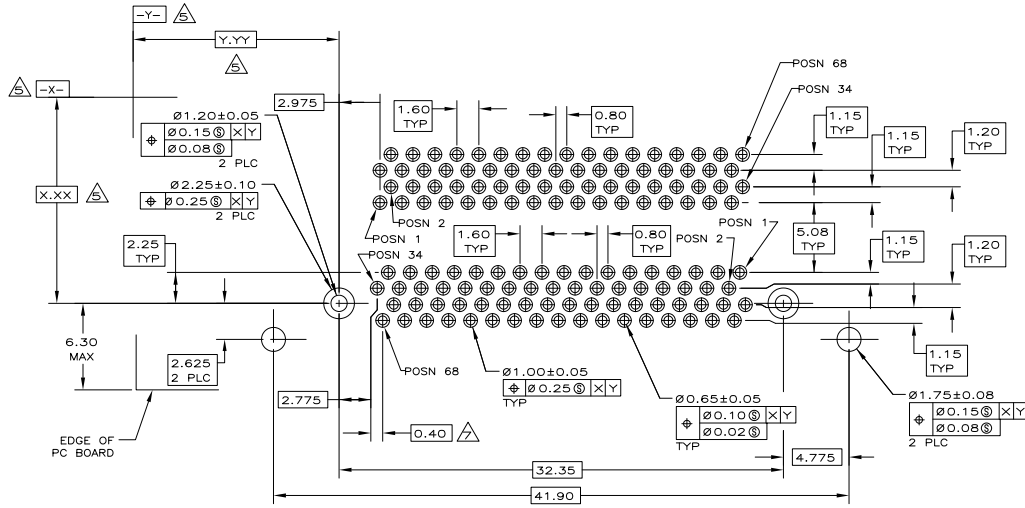
3

2

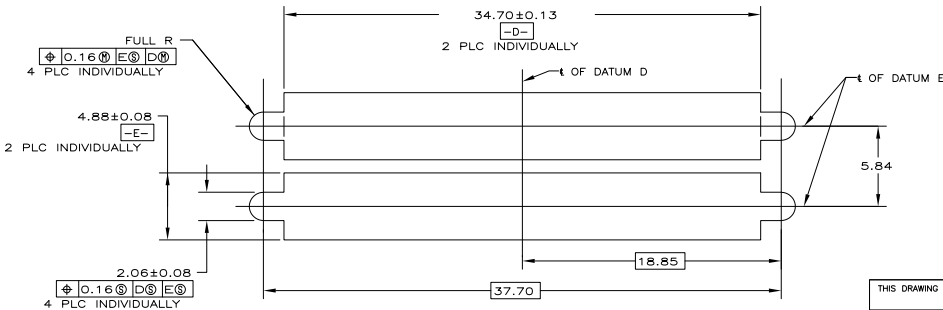
1

THIS DRAWING IS UNPUBLISHED. RELEASED FOR PUBLICATION.
 © COPYRIGHT BY TYCO ELECTRONICS CORPORATION. ALL INTERNATIONAL RIGHTS RESERVED.

LOC	DIST	REVISIONS					
GP	00	F	LNK	DESCRIPTION	DATE	OWN	APPD
		-	-	SEE SHEET 1			



PC BOARD MOUNTING DIMENSIONS
SCALE 5:1



PANEL CUT-OUT DIMENSIONS
SCALE 5:1

THIS DRAWING IS A CONTROLLED DOCUMENT.		DRN	T. SHUEY	ORMDRWS		Tyco Electronics Corporation Harrisburg, PA 17105-3608	
DIMENSIONS:		CHK	J. GERACE	ORMDRWS		RECEPTACLE ASSEMBLY, 68 POSITION, STACKED, RIGHT ANGLE, CHAMP 0.8mm	
TOLERANCES UNLESS OTHERWISE SPECIFIED:		APPD	M. WALMSLEY	ORMDRWS	NAME	SIZE	CAGE CODE (DRAWING NO)
0 PLC	±	APPLICATION SPEC				A2	00779C=787962
1 PLC	±	WEIGHT					
2 PLC	±						
3 PLC	± 0.13						
4 PLC	±						
ANGLES	± 1°						
MATERIAL							
	FINISH						
CUSTOMER DRAWING						SCALE	5:1
						SHEET	3 of 3
						REV	T

1471-9 (1/08)

787962

A