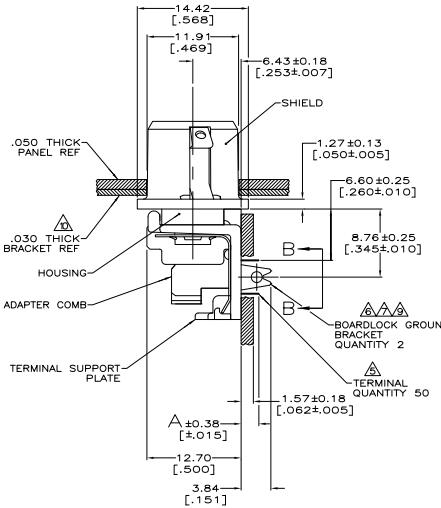
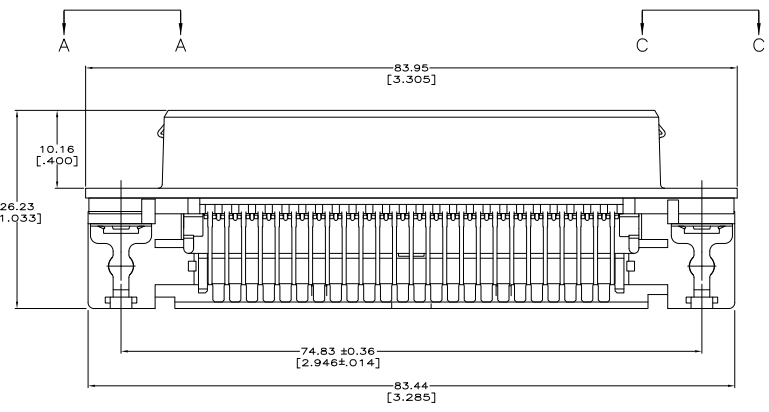
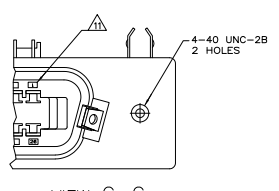
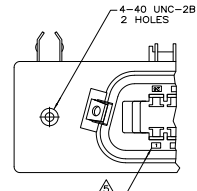
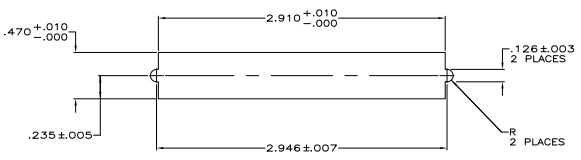
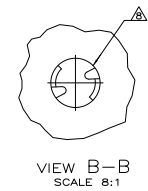
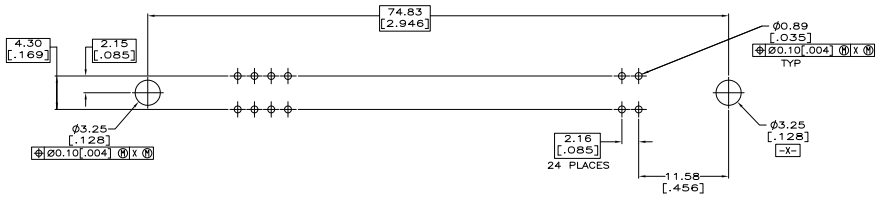


THIS DRAWING IS UNCLASSIFIED
 UNLESS INDICATED OTHERWISE
 © 2008 BY TDK ELECTRONICS CORPORATION. ALL RIGHTS RESERVED.

REV	DATE	DESCRIPTION	BY	CHK	APP
00					
H		REVISED FOR ECO-08-027327	CHAPFON	BM	WM
HT		REVISED FOR ECO-09-024717	SONENON	KK	AEG



- MATERIAL:
 HOUSING, ADAPTER COMB AND SUPPORT PLATE - POLYESTER, BLACK.
 TERMINALS - HIGH STRENGTH COPPER ALLOY PLATED WITH EITHER 0.76µm [.000030] MIN GOLD PLATE OR GOLD FLASH OVER PALLADIUM NICKEL PLATE, 0.76µm [.000030] MIN TOTAL ON MATING SURFACE, 3.05µm [.000120] MIN TIN-LEAD PLATE ON TAILS. ALL OVER 1.27µm [.000050] MIN NICKEL UNDERPLATE OVER ENTIRE TERMINAL.
 SHIELD - BRIGHT NICKEL OVER COPPER PLATED ZINC.
 BOARDLOCK GROUND BRACKET - TIN-LEAD PLATED CARBON STEEL.
- THE CONTACT SURFACES OF THE TERMINALS ARE COATED WITH LUBRICANT.
 - CENTER-TO-CENTER SPACING OF TERMINALS IS 2.16 [.085] NOMINAL.
- ALL DIMENSIONS SHOWN ARE MAXIMUM UNLESS OTHERWISE SPECIFIED.
- TERMINAL 1 LOCATED IN THIS ROW FOR STANDARD ORIENTATION, SEE VIEW A-A.
 - BOARDLOCK GROUNDING BRACKET RETAINS CONNECTOR IN 1.58 [.062] THICK PC BOARD WITHOUT ADDITIONAL HARDWARE.
 - BOARDLOCK GROUNDING BRACKET LOCATES CONNECTOR FLUSH WITH TOP OF PC BOARD AND SPRING LOCKS BENEATH.
 - CYLINDRICAL SHAPE OFFERS 180° OF SOLDERING SURFACE.
 - SURFACE AREA OF BOARDLOCK GROUNDING BRACKET BELOW PC BOARD SHALL PASS SOLDERABILITY REQUIREMENTS IN ACCORDANCE WITH AMP SPEC 109-11-2. DISCOLORATION, SCRATCHES, SPOTS AND OTHER COSMETIC DEFICIENCIES TYPICAL OF BARREL PLATING PROCESSES ARE ACCEPTABLE PROVIDING PARTS PASS 24 HOUR EXPOSURE AT 95% RH AT 40° WITHOUT EVIDENCE OF CORROSION.
- OPTIONAL BRACKET SUPPLIED BY CUSTOMER.
- TERMINAL 1 LOCATED IN THIS ROW FOR REVERSE ORIENTATION, SEE VIEW C-C.
 - OBSOLETE
 - OBSOLETE PARTS: OBSOLETE CIS STREAMLINING PER D.RENAUD/D.SINISI



REV	DATE	DESCRIPTION	BY	CHK	APP
SUPERSEDED	3.175 [1.25]	1-26	REVERSE VIEW C-C		1339447-9
OBSOLETE	2.29 [0.90]	NONE	REVERSE VIEW C-C		1339447-8
	2.29 [0.90]	NONE	STANDARD VIEW A-A		1339447-7
OBSOLETE	2.29 [0.90]	25-50	REVERSE VIEW C-C		1339447-6
	2.29 [0.90]	25-50	STANDARD VIEW A-A		1339447-5
	2.29 [0.90]	1-26/25-50	REVERSE VIEW C-C		1339447-4
	2.29 [0.90]	1-26/25-50	STANDARD VIEW A-A		1339447-3
SUPERSEDED	2.29 [0.90]	1-26	REVERSE VIEW C-C		1339447-2
	2.29 [0.90]	1-26	STANDARD VIEW A-A		1339447-1

THIS DRAWING IS A CONTROLLED DOCUMENT.		DATE OF ISSUE: 08/08/08		DRAWN BY: [Signature]	
DRAWING NO: 100779		REV: 01		DATE: 08/08/08	
CUSTOMER DRAWING		DRAWING NO: 100779		REV: 01	