

4

3

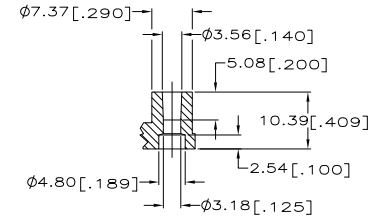
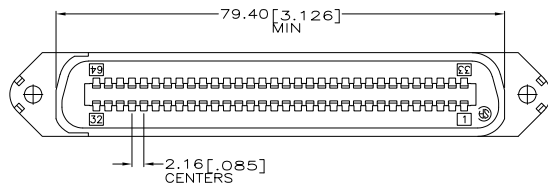
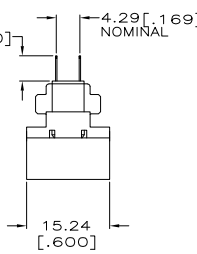
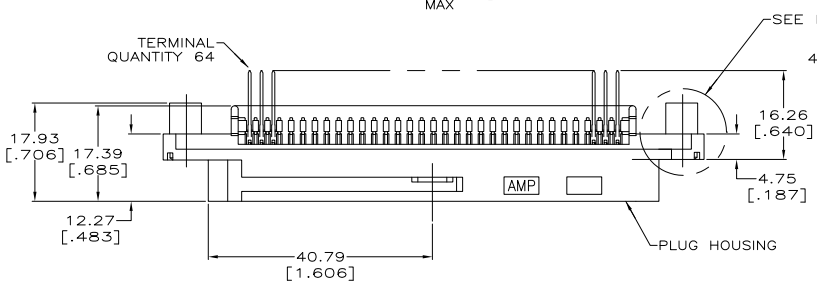
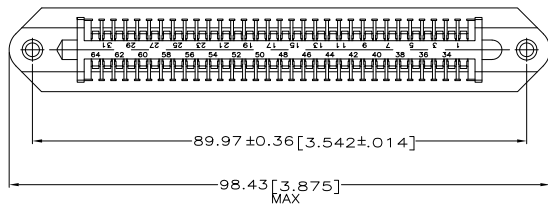
2

1

THIS DRAWING IS UNPUBLISHED. RELEASED FOR PUBLICATION.  
 © COPYRIGHT BY TYCO ELECTRONICS CORPORATION. ALL RIGHTS RESERVED.

LOC	DIST	REVISIONS		DATE	BY	APP'D
GP	00	F	LWR			
		K	REVISED PER ECO-08-007327	22JUL08	BM	WM

- ⚠ THE CONTACT SURFACES OF THE TERMINALS ARE COATED WITH LUBRICANT.
- 2. ALL DIMENSIONS SHOWN ARE FOR REFERENCE ONLY UNLESS OTHERWISE SPECIFIED.
- ⚠ 3. MATERIAL:  
 HOUSING - THERMOPLASTIC, BLACK.  
 TERMINAL - PHOSPHOR BRONZE PLATED WITH EITHER 0.76µm [0.000030] MIN GOLD PLATE OR GOLD FLASH OVER PALLADIUM NICKEL PLATE, 0.76µm [0.000030] MIN TOTAL ON MATING SURFACE. 3.05µm [0.000120] MIN TIN-LEAD PLATE ON TAILS OVER 1.27µm [0.000050] MIN NICKEL UNDERPLATE OVER ENTIRE TERMINAL.



DETAIL A

552243-1  
 PART NUMBER

THIS DRAWING IS A CONTROLLED DOCUMENT.		DR	DL	DEUMOND	100C22001	Tyco Electronics Corporation Harrisburg, PA 17105-3608
		CHK	DL	DEUMOND	100C22001	
DIMENSIONS: mm [INCHES]		TOLERANCES UNLESS OTHERWISE SPECIFIED:		APPC		PLUG ASSEMBLY, 64 POSITION, VERTICAL MOUNTING (CHAMP-LOK WITH STANDOFFS)
		0 PL	±	100C22001		
		1 PL	±			RESTRICTED TO
		2 PL	±			
		3 PL	±			SCALE
		4 PL	±			
MATERIAL		FINISH		WEIGHT		SHEET
⚠		⚠		-		
				CUSTOMER DRAWING		1 of 1
						REV
						K

AMP 1471-9 REV 31MAR2000