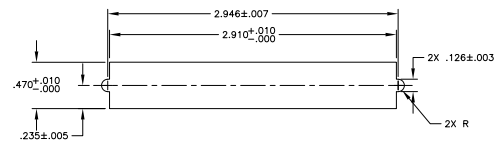
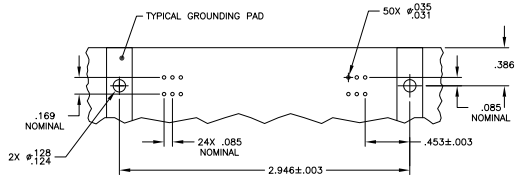
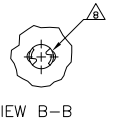
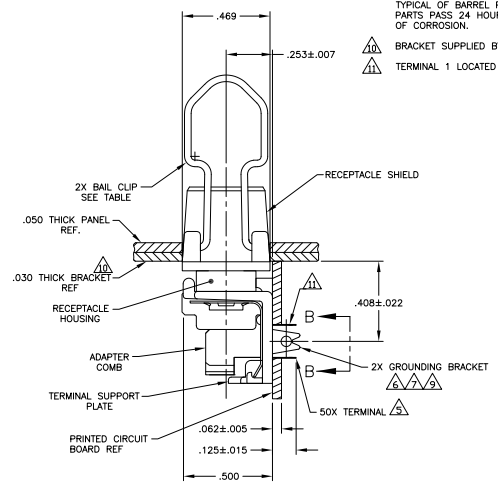
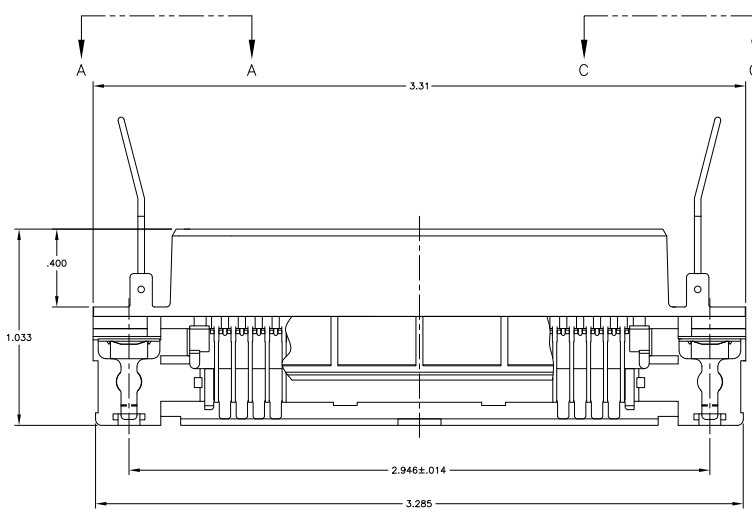
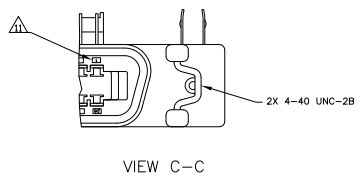
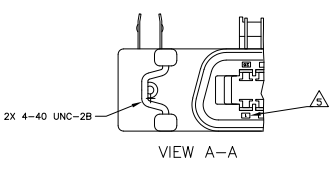


THIS DRAWING IS UNPUBLISHED. ALL RIGHTS RESERVED.
 © 2008 BY TTI ELECTRONICS CORPORATION

REV	DATE	DESCRIPTION	BY	APP
GP 00				
L		REVISED FOR ECO-09-031037		22SEP2008 CR PR



- △ MATERIAL:
 HOUSING & ADAPTER COMB: POLYESTER, BLACK.
 BAIL CLIPS: PASSIVATED STAINLESS STEEL.
 RECEPTACLE SHIELD: BRIGHT NICKEL PLATED OVER COPPER PLATED ZINC.
 TERMINALS - HIGH STRENGTH COPPER ALLOY PLATED WITH EITHER .00030 MIN GOLD PLATE OR GOLD FLASH OVER PALLADIUM NICKEL PLATE. .000030 MIN TOTAL ON MATING SURFACE. 5.05µm [.000120] MIN TIN-LEAD PLATE ON TAILS. ALL OVER 1.27µm [.000050] MIN NICKEL UNDERPLATE OVER ENTIRE TERMINAL.
 GROUND BRACKET: TIN LEAD PLATED CARBON STEEL.
- THE CONTACT SURFACES OF THE TERMINALS ARE COATED WITH LUBRICANT.
 - CENTER-TO-CENTER SPACING OF TERMINALS IS .085 NOMINAL.
- △ ALL DIMENSIONS SHOWN ARE MAXIMUM UNLESS OTHERWISE SPECIFIED.
- △ TERMINAL 1 LOCATED IN THIS ROW FOR STANDARD ORIENTATION.
- △ GROUNDING BRACKET RETAINS CONNECTOR IN .062 THICK PC BOARD WITHOUT ADDITIONAL HARDWARE.
- △ GROUNDING BRACKET LOCATES CONNECTOR FLUSH WITH TOP OF PC BOARD AND SPRING LOCKS BENEATH.
- △ CYLINDRICAL SHAPE OFFERS 180° OF SOLDERING SURFACE.
- △ SURFACE AREA OF GROUNDING BRACKET BELOW PC BOARD SHALL PASS SOLDERABILITY REQUIREMENTS IN ACCORDANCE WITH AMP SPEC 109-11-2. DISCOLORATION SCRATCHES, SPOTS AND OTHER COSMETIC DEFICIENCIES TYPICAL OF BARREL PLATING PROCESSES ARE ACCEPTABLE PROVIDING PARTS PASS 24 HOUR EXPOSURE AT 95% RH AT 40°C WITHOUT EVIDENCE OF CORROSION.
- △ BRACKET SUPPLIED BY CUSTOMER.
- △ TERMINAL 1 LOCATED IN THIS ROW FOR REVERSE ORIENTATION.

ORIENTATION	DESCRIPTION	PART NUMBER
REVERSE VIEW C-C	AS SHOWN	555149-3
STANDARD VIEW A-A	WITHOUT BAIL CLIPS	555149-2
STANDARD VIEW A-A	AS SHOWN	555149-1

THIS DRAWING IS A CONTROLLED DOCUMENT.		DATE	12/16/07	BY	SEAL	12/16/07	DATE	12/16/07	BY	SEAL	12/16/07
DESIGNED	DESIGNED	DATE	12/16/07	BY	DATE	12/16/07	BY	DATE	12/16/07	BY	DATE
DRG NO.	REV	DATE	12/16/07	BY	DATE	12/16/07	BY	DATE	12/16/07	BY	DATE
SIZE	DATE	12/16/07	BY	DATE	12/16/07	BY	DATE	12/16/07	BY	DATE	12/16/07
SCALE	DATE	12/16/07	BY	DATE	12/16/07	BY	DATE	12/16/07	BY	DATE	12/16/07
CUSTOMER DRAWING	DATE	12/16/07	BY	DATE	12/16/07	BY	DATE	12/16/07	BY	DATE	12/16/07