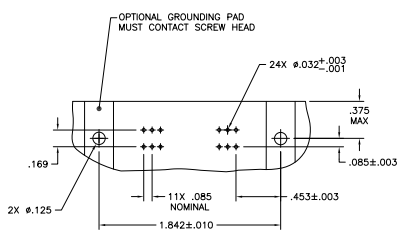
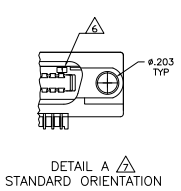


REV	DATE	DESCRIPTION	BY	CHK	APP
00					
B		REVISED FOR ECO-08-02737			

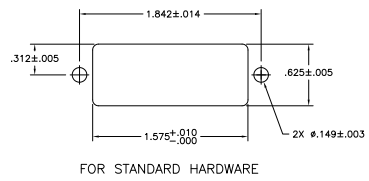
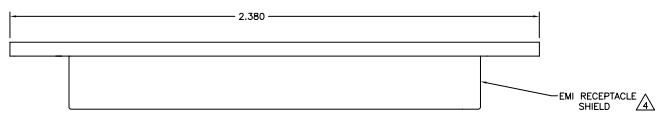
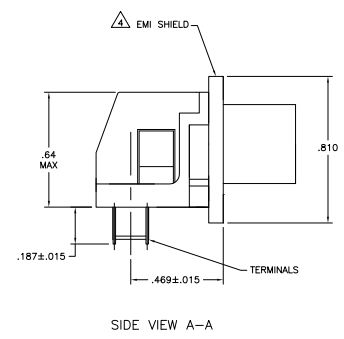
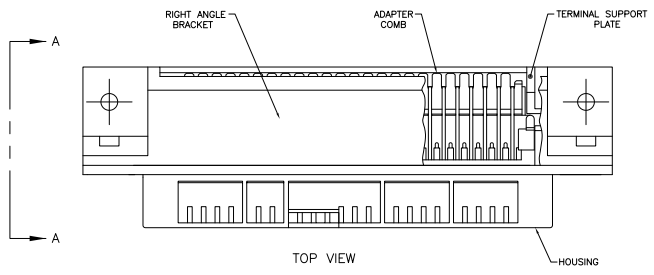


SUGGESTED PRINTED CIRCUIT BOARD MOUNTING DIMENSIONS

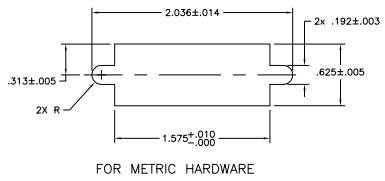


DETAIL A STANDARD ORIENTATION

- MATERIAL:**  
 HOUSING, RIGHT ANGLE BRACKET, ADAPTER COMB AND SUPPORT PLATE: THERMOPLASTIC, BLACK.  
 EMI SHIELD: BRIGHT NICKEL OVER COPPER PLATED DIE CASTING.  
 TERMINALS - HIGH STRENGTH COPPER ALLOY PLATED WITH EITHER .000030 MIN GOLD PLATE OR GOLD FLASH OVER PALLADIUM NICKEL PLATE, .000030 MIN TOTAL ON MATING SURFACE. .000120 MIN TIN PLATE ON TAILS, ALL OVER .000050 MIN NICKEL UNDERPLATE OVER ENTIRE TERMINAL.
- THE CONTACT SURFACES OF THE TERMINALS ARE COATED WITH LUBRICANT.
  - CENTER-TO-CENTER SPACING OF TERMINALS IS .085.
  - EMI RECEPTACLE SHIELD NOT ASSEMBLED.
  - ALL DIMENSIONS SHOWN ARE FOR REFERENCE ONLY UNLESS OTHERWISE SPECIFIED.
  - TERMINAL 1 IS LOCATED IN THIS ROW FOR STANDARD ORIENTATION, SEE DETAIL A.
  - DETAIL A IS SHOWN FROM MATING SIDE OF RECEPTACLE ASSEMBLY.



FOR STANDARD HARDWARE



FOR METRIC HARDWARE

SUGGESTED PANEL CUTOUT FOR REAR PANEL MOUNTING

THIS DRAWING IS A CONTROLLED DOCUMENT.		BY	MCMASTER	ISSUED	
DESIGNED	BY	DATE	REVISED	BY	DATE
DRAWN	BY	DATE	REVISED	BY	DATE
CHECKED	BY	DATE	REVISED	BY	DATE
APPROVED	BY	DATE	REVISED	BY	DATE
CUSTOMER DRAWING		DATE	2-1	REV	1

SEE DETAIL A	5553119-1
DESCRIPTION	PART NUMBER

THIS DRAWING IS A CONTROLLED DOCUMENT.	BY	MCMASTER	ISSUED		
DESIGNED	BY	DATE	REVISED	BY	
DRAWN	BY	DATE	REVISED	BY	
CHECKED	BY	DATE	REVISED	BY	
APPROVED	BY	DATE	REVISED	BY	
CUSTOMER DRAWING		DATE	2-1	REV	1