

4

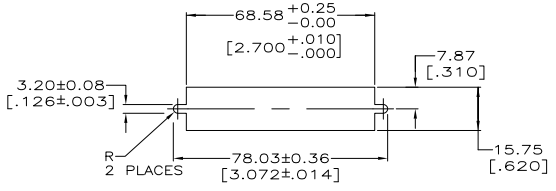
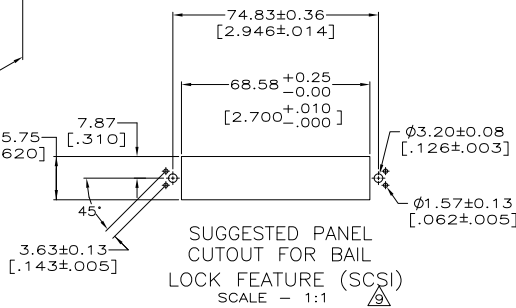
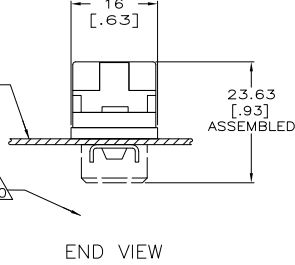
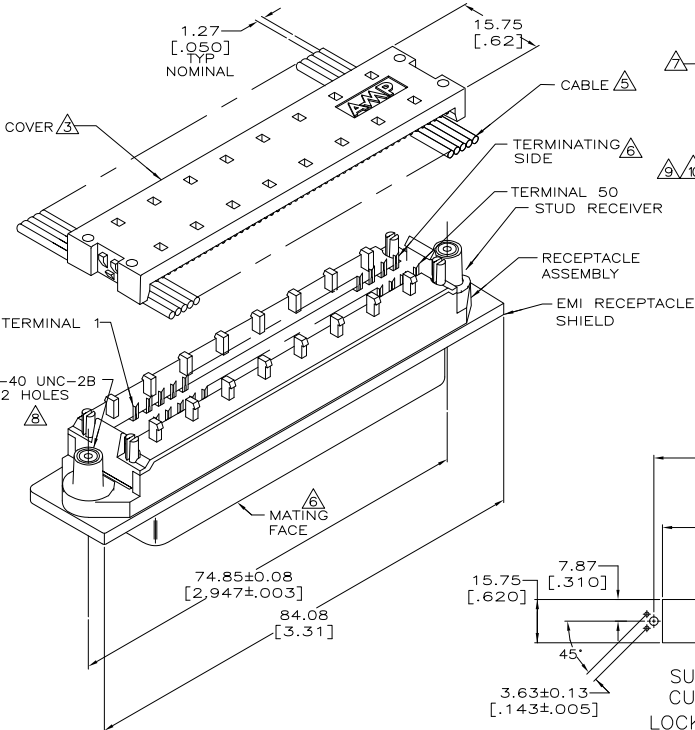
3

2

1

THIS DRAWING IS UNPUBLISHED. RELEASED FOR PUBLICATION.  
 BY TYCO ELECTRONICS CORPORATION. ALL RIGHTS RESERVED.

LOC	DIST	REVISIONS		DATE	BY	APP'D
GP	00	F	LR			
		K		REVISED PER ECO-08-007327	17APROB	BM WM



1. THE CONTACT SURFACES OF THE TERMINALS ARE COATED WITH LUBRICANT.
2. MATERIAL:  
HOUSING & COVER - POLYPHENYLENE OXIDE (BLACK).  
TERMINALS - PHOS BRONZE PLATED WITH EITHER 0.76µm [.000030] MINIMUM GOLD PLATE OR GOLD FLASH OVER PALLADIUM NICKEL PLATE, 0.76µm [.000030] MIN TOTAL ON MATING SURFACE. GOLD FLASH PLATED ON TERMINATING SIDE. 1.27µm [.000050] MINIMUM NICKEL UNDERPLATE OVER ENTIRE TERMINAL.  
EMI SHIELD - NICKEL PLATED DIE CASTING.  
STUD RECEIVER - STAINLESS STEEL.
3. COVER SHOWN LOOSE BUT SHIPPED ASSEMBLED.
4. WIRE RANGE: 26 AWG SOLID THRU 30 AWG SOLID AND 28 AWG STRANDED RIBBON CABLE.
5. FLAT CABLE SHALL BE FURNISHED BY CUSTOMER.
6. MATING FACE CONSISTS OF TWO ROWS OF TERMINALS ON 2.16 [.085] CENTERS. TERMINATING SIDE CONSISTS OF TERMINALS ON 2.54 [.100] CENTERS FOR AN EFFECTIVE 1.27 [.050] TERMINATION.
7. PANEL THICKNESS RANGE: 1.58 [.062] MAXIMUM.
8. HOLES TO BE TAPPED AFTER PLATING.
9. USE HARDWARE KIT 554818-2 WHEN BAIL LOCK FEATURE IS REQUIRED.
10. THE BAIL LOCK FEATURE HAS APPLICATION FOR SMALL COMPUTER SYSTEMS INTERFACE (SCSI).
11. ALL DIMENSIONS SHOWN ARE MAXIMUM UNLESS OTHERWISE SPECIFIED.

554436-2  
PART NO

THIS DRAWING IS A CONTROLLED DOCUMENT.		DRW K. TILLMAN/JTA	12-21-93	Tyco Electronics Corporation Harrisburg, PA 17105-3608	
DIMENSIONS: mm [INCHES]		CHK C. WHITT	9-13-94	NAME EMI RECEPTACLE ASSEMBLY, 50 POSITION, LOW PROFILE, SHIELDED, SCREW LOCK,	
TOLERANCES UNLESS OTHERWISE SPECIFIED:		APPC J. HARRIS	9-20-94	SIZE 108-6076	
Ø	PLC	±		APPLICATION SPEC	114-6030
1	PLC	±		WEIGHT	-
2	PLC	±		DATE	00779
3	PLC	±		DRAWING NO	C=554436
4	PLC	±		RESTRICTED TO	-
MATERIAL		FINISH		SCALE	2:1
CUSTOMER DRAWING				SHEET	1 of 1
				REV	K

AMP 1471-9 REV 31MMR2000

554436

A