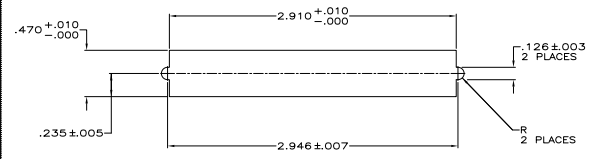
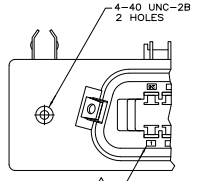


THIS DRAWING IS UNPUBLISHED
 ALL RIGHTS RESERVED

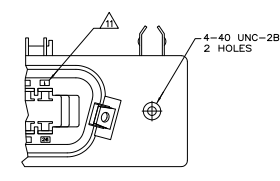
REV	DATE	DESCRIPTION	BY	APP
00				
C2		REVISED PER EDD-11-005033	24MMR11	RK HMR



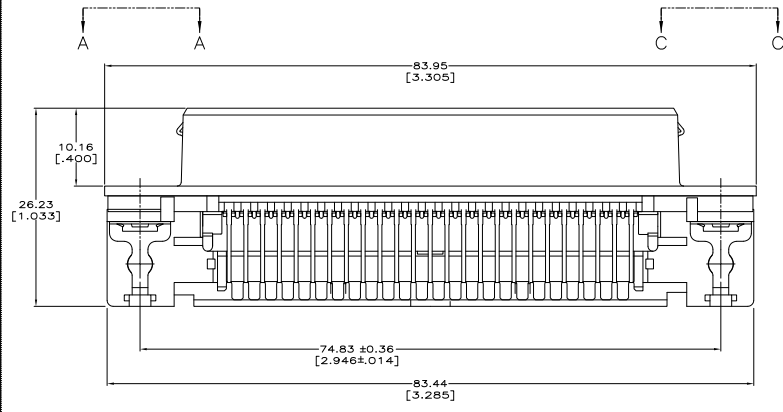
SUGGESTED BRACKET CUTOUT
 MOUNTING DIMENSIONS
 SCALE 2:1



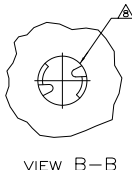
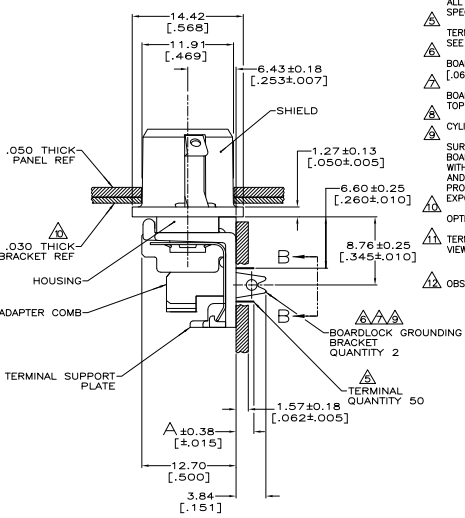
VIEW A-A



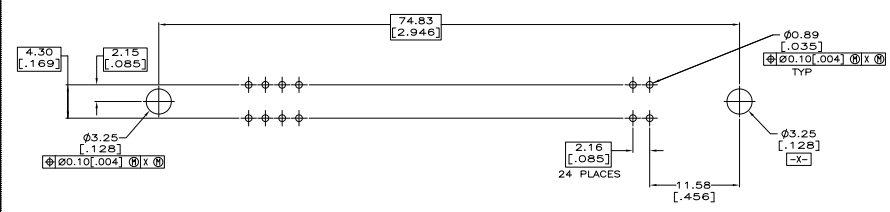
VIEW C-C



SUGGESTED PRINTED CIRCUIT BOARD
 MOUNTING DIMENSIONS



VIEW B-B
 SCALE 8:1



- △ MATERIAL: HOUSING, ADAPTER COMB & SUPPORT PLATE - POLYESTER, BLACK. TERMINALS - HIGH STRENGTH COPPER ALLOY PLATED WITH EITHER 0.76µm [0.00030] MIN GOLD PLATE OR GOLD FLASH OVER PALLADIUM NICKEL PLATE, 0.76µm [0.00030] MIN TOTAL ON MATING SURFACE. 3.05µm [0.00120] MIN TIN PLATE ON TAILS. ALL OVER 1.27µm [0.00050] MIN NICKEL UNDERPLATE OVER ENTIRE TERMINAL.
- △ SHIELD - BRIGHT NICKEL OVER COPPER PLATED ZINC. BOARDLOCK GROUND BRACKET - TIN PLATED CARBON STEEL.
- 2. THE CONTACT SURFACES OF THE TERMINALS ARE COATED WITH LUBRICANT.
- 3. CENTER-TO-CENTER SPACING OF TERMINALS IS 2.16 [0.085] NOMINAL.
- △ ALL DIMENSIONS SHOWN ARE MAXIMUM UNLESS OTHERWISE SPECIFIED.
- △ TERMINAL 1 LOCATED IN THIS ROW FOR STANDARD ORIENTATION, SEE VIEW A-A.
- △ BOARDLOCK GROUNDING BRACKET RETAINS CONNECTOR IN 1.58 [0.062] THICK PC BOARD WITHOUT ADDITIONAL HARDWARE.
- △ BOARDLOCK GROUNDING BRACKET LOCATES CONNECTOR FLUSH WITH TOP OF PC BOARD AND SPRING LOCKS BENEATH.
- △ CYLINDRICAL SHAPE OFFERS 180° OF SOLDERING SURFACE.
- △ SURFACE AREA OF BOARDLOCK GROUNDING BRACKET BELOW PC BOARD SHALL PASS SOLDERABILITY REQUIREMENTS IN ACCORDANCE WITH AMP SPEC 109-11-2. DISCOLORATION, SCRATCHES, SPOTS AND OTHER COSMETIC DEFICIENCIES TYPICAL OF BARREL PLATING PROCESSES ARE ACCEPTABLE PROVIDING PARTS PASS 24 HOUR EXPOSURE AT 95% RH AT 40°C WITHOUT EVIDENCE OF CORROSION.
- △ OPTIONAL BRACKET SUPPLIED BY CUSTOMER.
- △ TERMINAL 1 LOCATED IN THIS ROW FOR REVERSE ORIENTATION, SEE VIEW C-C.
- △ OBSOLETE PARTS: OBSOLETE CIS STREAMLINING PER D.RENAUD/D.SINISI

REV	DATE	DESCRIPTION	BY	APP
3.175 [1.25]	NONE	△ STANDARD VIEW A-A	1-6339447-0	
3.175 [1.25]	1-26	△ REVERSE VIEW C-C	6339447-9	
2.29 [0.90]	NONE	△ REVERSE VIEW C-C	6339447-8	
2.29 [0.90]	NONE	△ STANDARD VIEW A-A	6339447-7	
2.29 [0.90]	25-50	△ REVERSE VIEW C-C	6339447-6	
2.29 [0.90]	25-50	△ STANDARD VIEW A-A	6339447-5	
2.29 [0.90]	1-26/25-50	△ REVERSE VIEW C-C	6339447-4	
2.29 [0.90]	1-26/25-50	△ STANDARD VIEW A-A	6339447-3	
2.29 [0.90]	1-26	△ REVERSE VIEW C-C	6339447-2	
2.29 [0.90]	1-26	△ STANDARD VIEW A-A	6339447-1	
DIN "X"	LATCH END	ORIENTATION	PART NUMBER	

THIS DRAWING IS A CONTROLLED DOCUMENT. I. L. DIMENSION (TYP) IN MILLIMETERS. S-TE Connectivity

RECEPTACLE ASSEMBLY LOW PROFILE, SHIELDED, RIGHT ANGLE, 50 POSITION, BOARD LOCK, INTERNAL LOCKING, LATCH/CHAMP

SIZE: 0.00779 (G) = 6339447

CUSTOMER DRAWING: DATE: 4.1 SHEET: 1 OF 1 C2