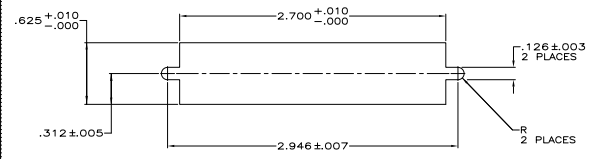
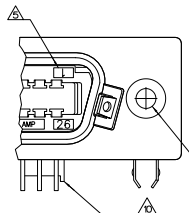


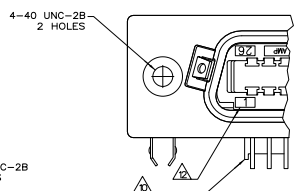
THIS DRAWING IS UNCLASSIFIED
 UNLESS INDICATED OTHERWISE
 © 2007 TTI ELECTRONICS CORPORATION ALL RIGHTS RESERVED



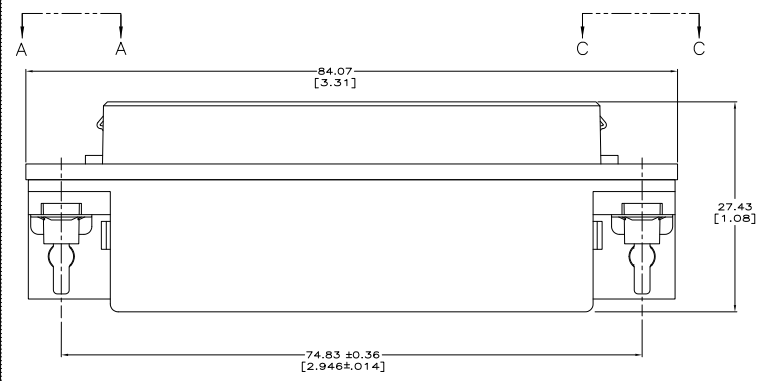
SUGGESTED BRACKET CUTOUT
 MOUNTING DIMENSIONS
 SCALE 2:1



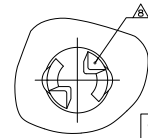
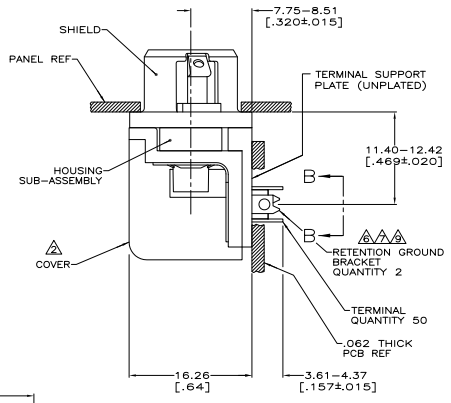
VIEW A-A
 STANDARD ORIENTATION
 ROTATED 180° CCW



VIEW C-C
 REVERSE ORIENTATION
 ROTATED 180° CCW



SUGGESTED PRINTED CIRCUIT BOARD
 MOUNTING DIMENSIONS



VIEW B-B
 SCALE 8:1

REV	DATE	DESCRIPTION	BY	CHKD
B	REVISED PER ECO-08-027327		DAW/PJH	BM/WM
B1	REVISED PER ECO-09-028827		10N/009	KK/AEG

- △ MATERIAL:
 HOUSING & ADAPTOR COMB - POLYESTER, BLACK.
 SUPPORT PLATE - POLYESTER, NATURAL (OR EQUIVALENT).
 SHIELD - BRIGHT NICKEL OVER COPPER PLATED ZINC.
 RETENTION GROUND BRACKET - TIN PLATED CARBON STEEL.
 TERMINALS - HIGH STRENGTH COPPER ALLOY PLATED WITH EITHER 0.76µm [0.00030] MIN GOLD PLATE OR GOLD FLASH OVER PALLADIUM NICKEL PLATE, 0.76µm [0.00030] MIN TOTAL ON MATING SURFACE, 3.05µm [0.00120] MIN TIN PLATE ON TAILS. ALL OVER 1.27µm [0.00050] MIN NICKEL UNDERPLATE OVER ENTIRE TERMINAL.
- △ COVER - POLYESTER, NATURAL (OR EQUIVALENT), PLATED MATTE COPPER 3.81µm [0.00150] MINIMUM THICK, BENEATH MATTE NICKEL PLATE, 3.81µm [0.00150] MINIMUM THICK.
- 3. CENTER-TO-CENTER SPACING OF TERMINALS IS 2.16 [0.85] NOMINAL.
- △ ALL DIMENSIONS SHOWN ARE MAXIMUM UNLESS OTHERWISE SPECIFIED.
- △ TERMINAL 1 LOCATED THIS ROW FOR STANDARD ORIENTATION, SEE VIEW A-A.
- △ GROUNDING BRACKET RETAINS CONNECTOR IN 1.57 [0.62] THICK PC BOARD WITHOUT ADDITIONAL HARDWARE.
- △ GROUNDING BRACKET LOCATES CONNECTOR FLUSH WITH TOP OF PC BOARD AND SPRING LOCKS BENEATH.
- △ CYLINDRICAL SHAPE OFFERS 180° OF SOLDERING SURFACE.
- △ SURFACE AREA OF BOARDLOCK GROUNDING BRACKET BELOW PC BOARD SHALL PASS SOLDERABILITY REQUIREMENTS IN ACCORDANCE WITH TTI/O ELECTRONICS SPEC 109-11-2. DISCOLORATION, SCRATCHES, SPOTS AND OTHER COSMETIC DEFICIENCIES TYPICAL OF BARREL PLATING PROCESSES ARE ACCEPTABLE PROVIDING PARTS PASS 24 HOUR EXPOSURE AT 95% RH AT 40°C WITHOUT EVIDENCE OF CORROSION.
- △ IF TERMINALS DO NOT EXTEND BELOW COMB, COMB SHALL BE PARTIALLY RETRACTED BEFORE INSERTING CONNECTOR INTO PC BOARD.
- 11. THE CONTACT SURFACES OF THE TERMINALS ARE COATED WITH LUBRICANT.
- △ TERMINAL 1 LOCATED THIS ROW FOR REVERSE ORIENTATION, SEE VIEW C-C.
- △ OBSOLETE PARTS: OBSOLETE CIS STREAMLINING PER D.RENAUD/D.SINIS

REV	DATE	DESCRIPTION	BY	CHKD
25-50		△ REVERSE VIEW C-C		6368355-6
25-50		△ STANDARD VIEW A-A		6368355-5
1-26/25-50		△ REVERSE VIEW C-C		6368355-4
1-26/25-50		△ STANDARD VIEW A-A		6368355-3
1-26		△ REVERSE VIEW C-C		6368355-2
1-26		△ STANDARD VIEW A-A		6368355-1

LATCH END ORIENTATION PART NUMBER

THIS DRAWING IS A CONTROLLED DOCUMENT.	DATE	BY	CHKD
DATE	BY	CHKD	

THIS DRAWING IS A CONTROLLED DOCUMENT. DATE: 00779 BY: 6368355