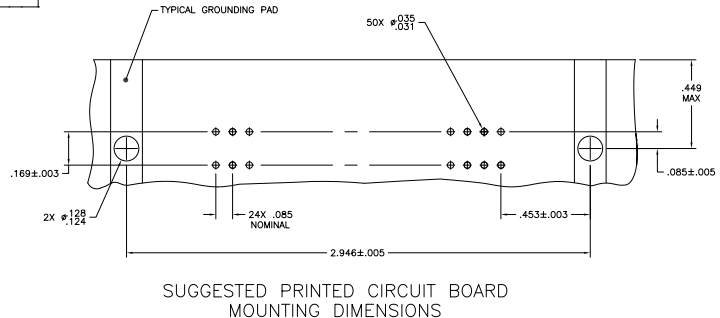
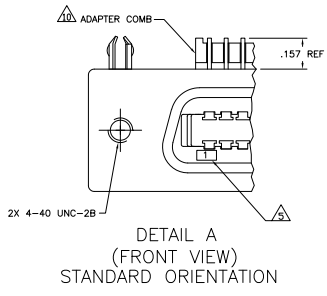
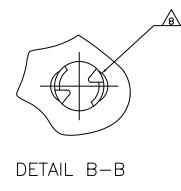
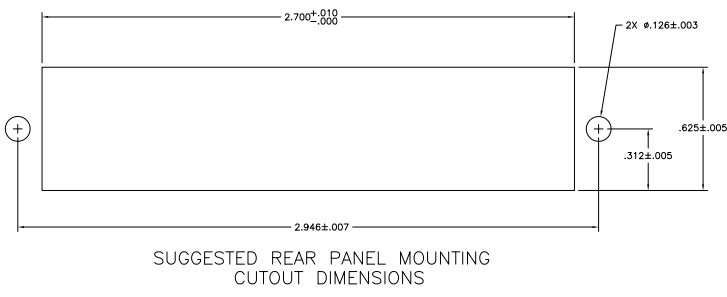
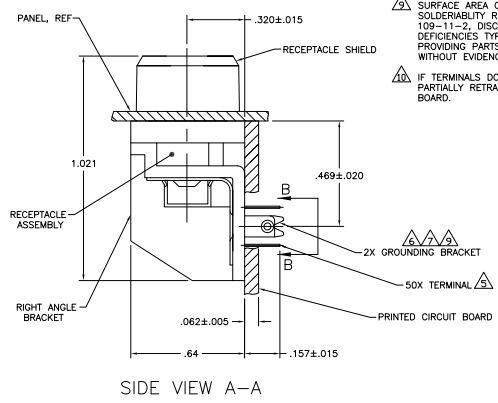
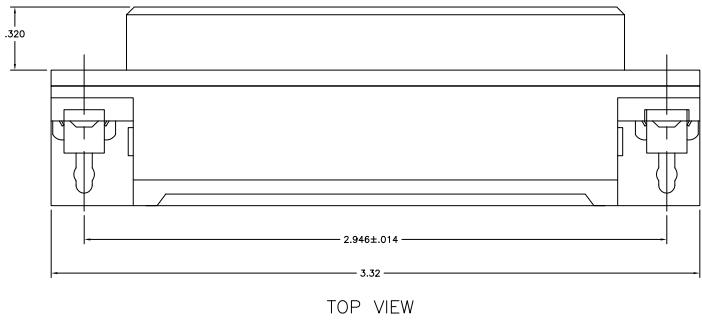


THIS DRAWING IS UNPUBLISHED. ALL RIGHTS RESERVED. © 2008 BY TYS ELECTRONICS CORPORATION. ALL RIGHTS RESERVED.

REV	DATE	DESCRIPTION	BY	CHK	APP
GP 00					
B		REVISED FOR ECO-08-02737			



- 1. MATERIAL: HOUSING, RIGHT ANGLE BRACKET, ADAPTER COMB & TERMINAL SUPPORT PLATE - THERMOPLASTIC, BLACK. RECEPTACLE SHIELD - BRIGHT NICKEL OVER COPPER PLATED DIE CASTING. TERMINALS - HIGH STRENGTH COPPER ALLOY PLATED WITH EITHER .00030 MIN GOLD PLATE OR GOLD FLASH OVER PALLADIUM NICKEL PLATE. .00030 MIN TOTAL ON MATING SURFACE. .00020 MIN TIN PLATE ON TAILS. ALL OVER .00050 MIN NICKEL UNDERPLATE OVER ENTIRE TERMINAL. GROUND BRACKET - TIN PLATED CARBON STEEL.
- 2. THE CONTACT SURFACES OF THE TERMINALS ARE COATED WITH LUBRICANT.
- 3. CENTER TO CENTER SPACING OF TERMINALS IS .085 NOMINAL.
- 4. ALL DIMENSIONS ARE MAXIMUM UNLESS OTHERWISE SPECIFIED.
- 5. TERMINAL 1 IS LOCATED IN THIS ROW FOR STANDARD ORIENTATION, SEE DETAIL A.
- 6. GROUNDING BRACKET RETAINS CONNECTOR IN .062 THICK PC BOARD WITHOUT ADDITIONAL HARDWARE.
- 7. GROUNDING BRACKET LOCATES CONNECTOR FLUSH WITH TOP OF PC BOARD AND SPRING LOCKS BENEATH.
- 8. CYLINDRICAL SHAPE OFFERS 180° OF SOLDERING SURFACE.
- 9. SURFACE AREA OF GROUNDING BRACKET BELOW PC BOARD SHALL PASS SOLDERABILITY REQUIREMENTS IN ACCORDANCE WITH AMP SPECIFICATION 109-11-2. DISCOLORATION, SCRATCHES, SPOTS AND OTHER COSMETIC DEFICIENCIES TYPICAL OF BARREL PLATING PROCESS ARE ACCEPTABLE PROVIDING PARTS PASS 24 HOUR EXPOSURE AT 95% RH AT 40°C, WITHOUT EVIDENCE OF CORROSION.
- 10. IF TERMINALS DO NOT EXTEND BELOW COMB, THEN COMB SHALL BE PARTIALLY RETRACTED, BEFORE INSERTING CONNECTOR INTO THE PC BOARD.



STANDARD	5555387-2
ORIENTATION	PART NUMBER

THIS DRAWING IS A CONTROLLED DOCUMENT.		REV	DATE	BY	CHK	APP
DESIGNER	DR	DATE	BY	CHK	APP	
ENGINEER	ENR	DATE	BY	CHK	APP	
MANUFACTURER	MFG	DATE	BY	CHK	APP	
INSPECTOR	INS	DATE	BY	CHK	APP	
DATE	00779	DRAWING NO	5555387	REVISIONS		
CUSTOMER DRAWING		SCALE	1:1	SHEET	1	TOTAL