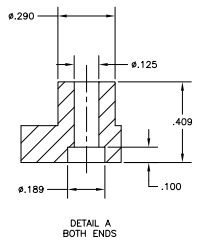
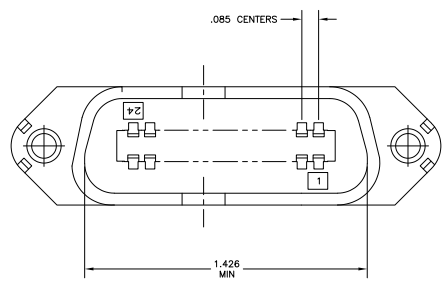
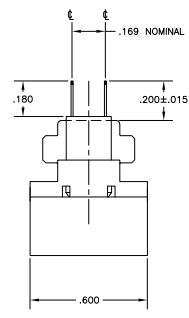
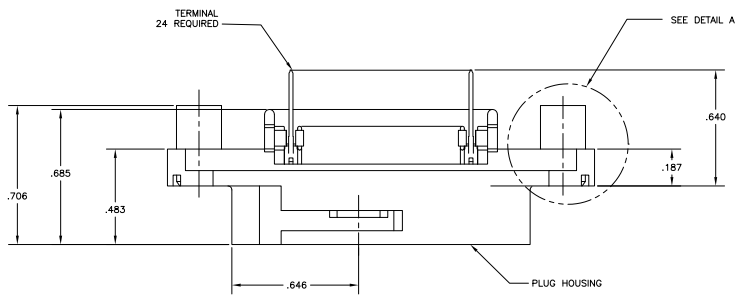
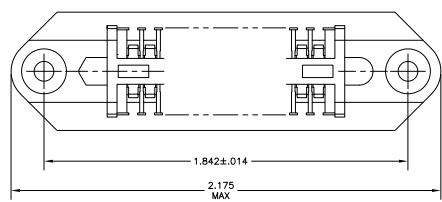


THIS DRAWING IS UNPUBLISHED. REPRODUCED FOR YOUR INFORMATION. ALL RIGHTS RESERVED.

REV. NO.		REVISIONS		DATE	BY	APP'D
00	GP	J	J			
		REVISED FOR ECO-08-007327				



1. THE CONTACT SURFACES OF THE TERMINALS ARE COATED WITH LUBRICANT.

△ ALL DIMENSIONS SHOWN ARE FOR REFERENCE ONLY UNLESS OTHERWISE SPECIFIED.

△ MATERIAL: HOUSING - THERMOPLASTIC, BLACK.  
 TERMINAL - PHOS BRONZE PLATED WITH EITHER .000030 MINIMUM GOLD PLATE OR GOLD FLASH OVER PALLADIUM NICKEL PLATE, .000030 MIN TOTAL ON MATING SURFACE.  
 .000120 MINIMUM TIN-LEAD PLATE ON TAILS OVER .000050 MINIMUM NICKEL UNDERPLATE OVER ENTIRE TERMINAL.

552221-1  
PART NUMBER

THIS DRAWING IS A CONTROLLED DOCUMENT.		DATE: 10/06/97	BY: [Signature]	APPROVED: [Signature]	DATE: 10/06/97	BY: [Signature]	APPROVED: [Signature]
DESIGNED BY: [Signature]	DESIGNED: [Signature]	DATE: 10/06/97	BY: [Signature]	APPROVED: [Signature]	DATE: 10/06/97	BY: [Signature]	APPROVED: [Signature]
DRAWN BY: [Signature]		CHECKED BY: [Signature]		DATE: 10/06/97		BY: [Signature]	
TITLE: PLUG ASSY, 24 PGNL, VERT MTG WITH STANDOFFS CHAMP-LOCK		DRAWING NO: 00779		REV: 0		REWORKED TO: [Signature]	
CUSTOMER DRAWING		DATE: 4-1		REV: 1		BY: J	