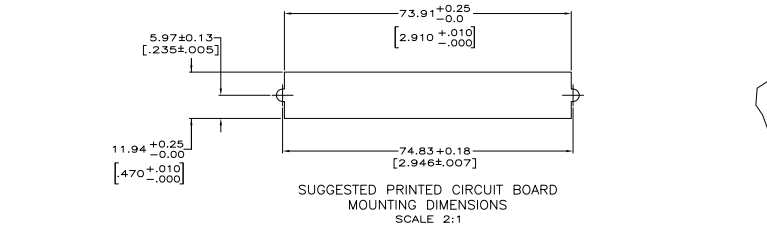
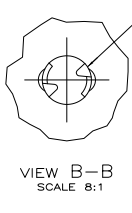
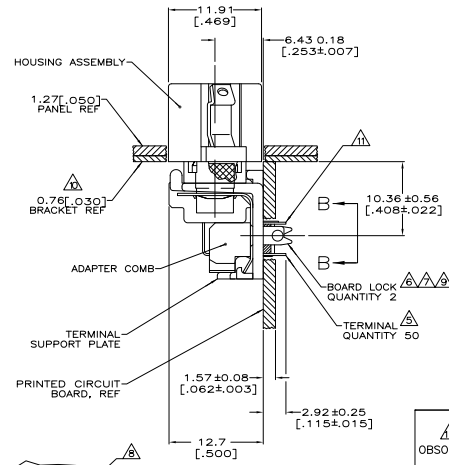
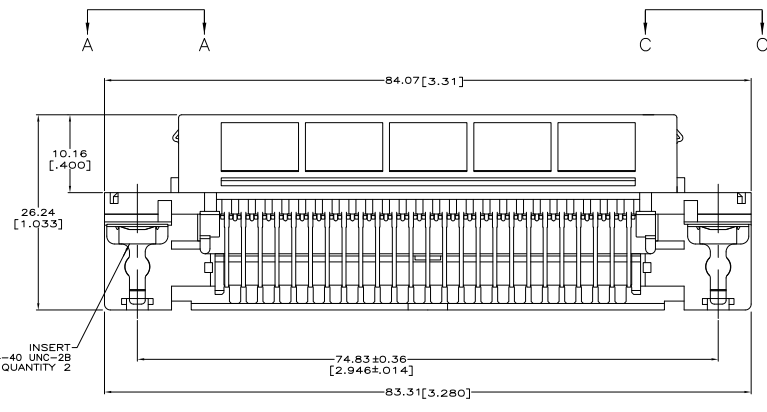
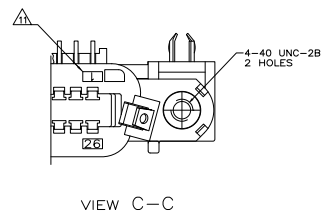
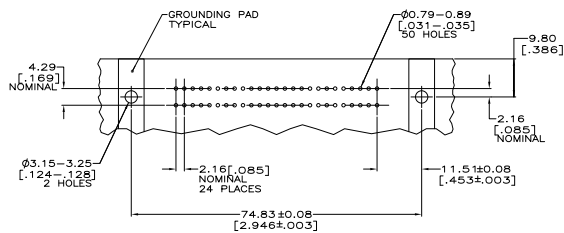
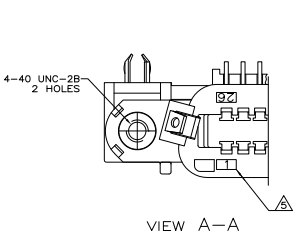


REV	GP	DESCRIPTION	DATE	BY	APP
00	C	REVISED PER ECO-08-007327		DAMPHOR	BM WM
01	CT	REVISED PER ECO-10-000443		25MWH	KK HMR



- MATERIAL: HOUSING, SUPPORT PLATE AND ADAPTER COMB - POLYESTER, BLACK. LATCH - ZINC PLATED CARBON STEEL. INSERT - BRASS.
- TERMINALS - HIGH STRENGTH COPPER ALLOY PLATED WITH EITHER 0.76µm [0.00030] MIN GOLD PLATE OR GOLD FLASH OVER PALLADIUM NICKEL PLATE, 0.76µm [0.00030] MIN TOTAL ON MATING SURFACE. 3.05µm [0.00120] MIN TIN-LEAD PLATE ON TAILS. ALL OVER 1.27µm [0.00050] MIN NICKEL UNDERPLATE OVER ENTIRE TERMINAL. BOARD LOCK - TIN-LEAD PLATED CARBON STEEL.
- 2. THE CONTACT SURFACES OF THE TERMINALS ARE COATED WITH LUBRICANT.
- 3. CENTER-TO-CENTER SPACING OF TERMINALS IS 2.16 [0.85] NOMINAL.
- ALL DIMENSIONS SHOWN ARE MAXIMUM UNLESS OTHERWISE SPECIFIED.
- TERMINAL 1 LOCATED IN THIS ROW FOR STANDARD ORIENTATION. SEE VIEW A-A.
- BOARD LOCK RETAINS CONNECTOR IN 1.58[0.62] THICK PC BOARD WITHOUT ADDITIONAL HARDWARE.
- BOARD LOCK LOCATES CONNECTOR FLUSH WITH TOP OF PC BOARD AND SPRING LOCKS BENEATH.
- CYLINDRICAL SHAPE OFFERS 180° OF SOLDERING SURFACE.
- SURFACE AREA BELOW PC BOARD SHALL PASS SOLDERABILITY REQUIREMENTS IN ACCORDANCE WITH AMP SPEC 109-11-2. DISCOLORATION, SCRATCHES, SPOTS AND OTHER COSMETIC DEFICIENCIES TYPICAL OF BARREL PLATING PROCESSES ARE ACCEPTABLE PROVIDING PARTS PASS 24 HOUR EXPOSURE AT 95% RH AT 40°C WITHOUT EVIDENCE OF CORROSION.
- BRACKET SUPPLIED BY CUSTOMER. (OPTIONAL)
- TERMINAL 1 LOCATED IN THIS ROW FOR REVERSE ORIENTATION. SEE VIEW C-C.
- ONE LATCH ONLY, LOCATED AT CIRCUIT 1/26 END, P/N 1116794-5 AND 1116794-6.
- OBsolete PARTS: OBTOLITE CIS STREAMLINING PER D.RENAUD/D.SINIS.

REV	DESCRIPTION	DATE	BY	APP
1	REVERSE, SEE VIEW C-C			
2	STANDARD, SEE VIEW A-A			
3	REVERSE, SEE VIEW C-C			
4	NO LATCHES			
5	AS SHOWN			
6	REVERSE, SEE VIEW C-C			
7	NO LATCHES			
8	AS SHOWN			
9	REVERSE, SEE VIEW A-A			
10	STANDARD, SEE VIEW A-A			

ORIENTATION	DESCRIPTION	PART NUMBER
REVERSE, SEE VIEW C-C		1116794-6
STANDARD, SEE VIEW A-A		1116794-5
REVERSE, SEE VIEW C-C	NO LATCHES	1116794-4
AS SHOWN		1116794-3
REVERSE, SEE VIEW C-C	NO LATCHES	1116794-2
STANDARD, SEE VIEW A-A	AS SHOWN	1116794-1

ORIENTATION	DESCRIPTION	PART NUMBER
REVERSE, SEE VIEW C-C		1116794-6
STANDARD, SEE VIEW A-A		1116794-5
REVERSE, SEE VIEW C-C	NO LATCHES	1116794-4
AS SHOWN		1116794-3
REVERSE, SEE VIEW C-C	NO LATCHES	1116794-2
STANDARD, SEE VIEW A-A	AS SHOWN	1116794-1

ORIENTATION	DESCRIPTION	PART NUMBER
REVERSE, SEE VIEW C-C		1116794-6
STANDARD, SEE VIEW A-A		1116794-5
REVERSE, SEE VIEW C-C	NO LATCHES	1116794-4
AS SHOWN		1116794-3
REVERSE, SEE VIEW C-C	NO LATCHES	1116794-2
STANDARD, SEE VIEW A-A	AS SHOWN	1116794-1