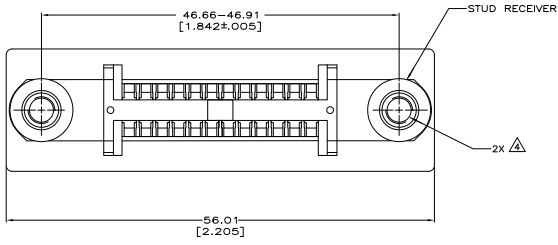
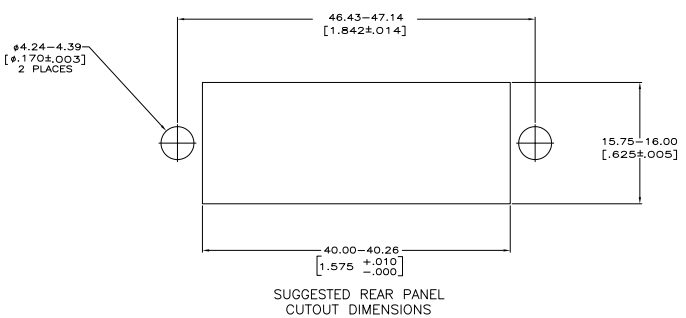
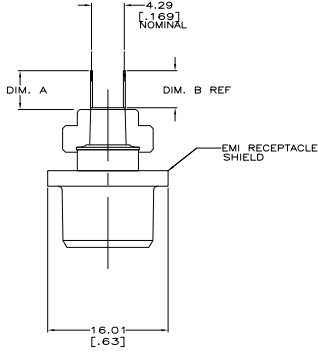
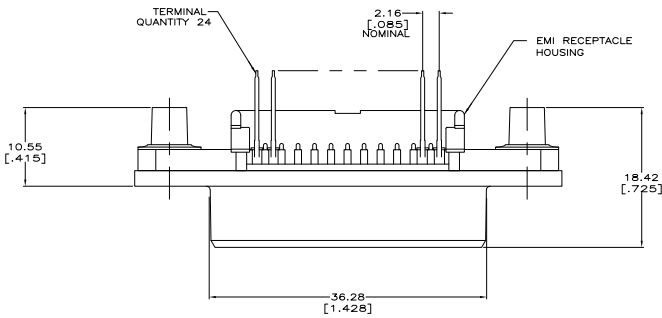


THIS DRAWING IS UNCLASSIFIED
 UNLESS INDICATED OTHERWISE
 © Copyright - BY THE ELECTRONIC CORPORATION ALL RIGHTS RESERVED

REVISIONS			
REV	DATE	DESCRIPTION	BY
L		REVISED PER ECO-08-007327	EM/WM
L1		REV PER ECO-09-021910	KJC/AEC



- △ DIMENSIONS ARE MAXIMUM UNLESS OTHERWISE SPECIFIED.
- 2. THE CONTACT SURFACES OF THE TERMINALS ARE COATED WITH LUBRICANT.
- △ MATERIAL: HOUSING - POLYESTER, BLACK.
 TERMINAL - PHOS BRONZE PLATED WITH EITHER 0.76µm [0.00030] MINIMUM GOLD PLATE OR GOLD FLASH OVER PALLADIUM NICKEL PLATE, 0.76µm [0.00030] MIN TOTAL ON MATING SURFACE, 3.05µm [0.00120] MINIMUM MATTE TIN-LEAD ON TAILS OVER 1.27µm [0.00050] MINIMUM NICKEL UNDERPLATE OVER ENTIRE TERMINAL.
 STUD RECEIVER - STAINLESS STEEL.
 SHIELD - NICKEL PLATED ZINC DIE CASTING.
- △ HOLES TO BE TAPPED AFTER PLATING.
- △ OBSOLETE PARTS: OBSOLETE CIS STREAMLINING PER D.RENAUD/D.SINISI



REV	DATE	DESCRIPTION	BY	
△	4-40 UNC-2B	3.05 [1.20]	3.81 [1.50]	554501-3
△	6-32 UNC-2B	4.70 [1.85]	5.47 [2.15]	554501-2
△	8-32 UNC-2B	3.05 [1.20]	3.81 [1.50]	554501-1

THIS DRAWING IS A CONTROLLED DOCUMENT		REV	DATE	DESCRIPTION	BY
REV	DATE	DESCRIPTION	BY	DATE	DESCRIPTION
1		RECEPTACLE ASSEMBLY, 24 POSITION, VERTICAL MOUNTING, SHIELDED, SCREW LOCK, CHAMP-LOMB			
2		REVISIONS			
3		REVISIONS			
4		REVISIONS			
5		REVISIONS			
6		REVISIONS			
7		REVISIONS			
8		REVISIONS			
9		REVISIONS			
10		REVISIONS			
11		REVISIONS			
12		REVISIONS			
13		REVISIONS			
14		REVISIONS			
15		REVISIONS			
16		REVISIONS			
17		REVISIONS			
18		REVISIONS			
19		REVISIONS			
20		REVISIONS			
21		REVISIONS			
22		REVISIONS			
23		REVISIONS			
24		REVISIONS			
25		REVISIONS			
26		REVISIONS			
27		REVISIONS			
28		REVISIONS			
29		REVISIONS			
30		REVISIONS			
31		REVISIONS			
32		REVISIONS			
33		REVISIONS			
34		REVISIONS			
35		REVISIONS			
36		REVISIONS			
37		REVISIONS			
38		REVISIONS			
39		REVISIONS			
40		REVISIONS			
41		REVISIONS			
42		REVISIONS			
43		REVISIONS			
44		REVISIONS			
45		REVISIONS			
46		REVISIONS			
47		REVISIONS			
48		REVISIONS			
49		REVISIONS			
50		REVISIONS			
51		REVISIONS			
52		REVISIONS			
53		REVISIONS			
54		REVISIONS			
55		REVISIONS			
56		REVISIONS			
57		REVISIONS			
58		REVISIONS			
59		REVISIONS			
60		REVISIONS			
61		REVISIONS			
62		REVISIONS			
63		REVISIONS			
64		REVISIONS			
65		REVISIONS			
66		REVISIONS			
67		REVISIONS			
68		REVISIONS			
69		REVISIONS			
70		REVISIONS			
71		REVISIONS			
72		REVISIONS			
73		REVISIONS			
74		REVISIONS			
75		REVISIONS			
76		REVISIONS			
77		REVISIONS			
78		REVISIONS			
79		REVISIONS			
80		REVISIONS			
81		REVISIONS			
82		REVISIONS			
83		REVISIONS			
84		REVISIONS			
85		REVISIONS			
86		REVISIONS			
87		REVISIONS			
88		REVISIONS			
89		REVISIONS			
90		REVISIONS			
91		REVISIONS			
92		REVISIONS			
93		REVISIONS			
94		REVISIONS			
95		REVISIONS			
96		REVISIONS			
97		REVISIONS			
98		REVISIONS			
99		REVISIONS			
100		REVISIONS			