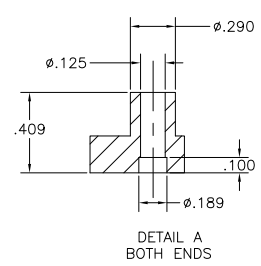
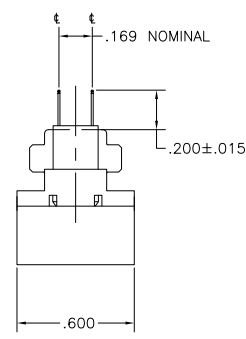


1. THE CONTACT SURFACES OF THE TERMINALS ARE COATED WITH LUBRICANT.
2. ALL DIMENSIONS SHOWN ARE FOR REFERENCE ONLY UNLESS OTHERWISE SPECIFIED.
3. MATERIAL: HOUSING - THERMOPLASTIC, BLACK.  
 TERMINAL - PHOS BRONZE PLATED WITH EITHER .000030 MINIMUM GOLD PLATE OR GOLD FLASH OVER PALLADIUM NICKEL PLATE, .000030 MINIMUM TOTAL ON MATING SURFACE. .000120 MINIMUM TIN-LEAD PLATE ON TAILS OVER .000050 MINIMUM NICKEL UNDERPLATE OVER ENTIRE TERMINAL.



552209-1  
 PART NUMBER

THIS DRAWING IS A CONTROLLED DOCUMENT.		DESIGN	DATE	BY	APP'D
DRAWING NUMBER		552209	08/27/07		
DRAWING TITLE		PLUG ASSY, 14 POSN/VERT MTC, W/ STANDOFF, CHAMP-LOK			
DRAWING SCALE		A1	00779	552209	
DRAWING SHEET		4.1	1	1	J