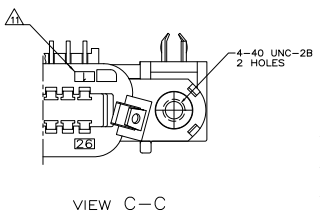
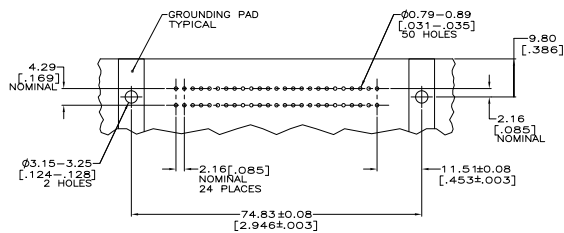
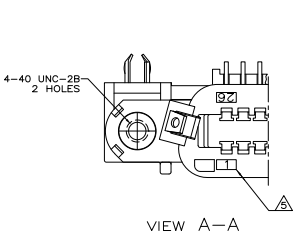
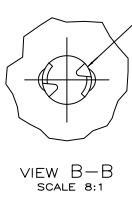
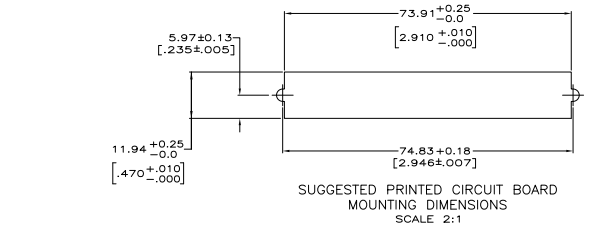
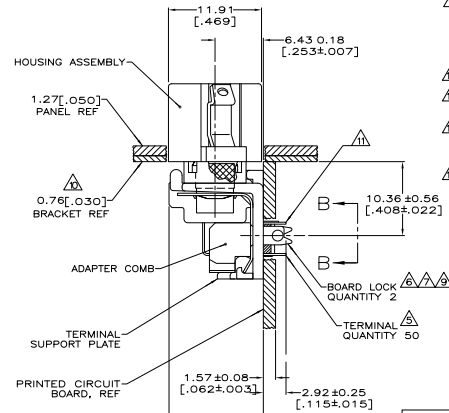
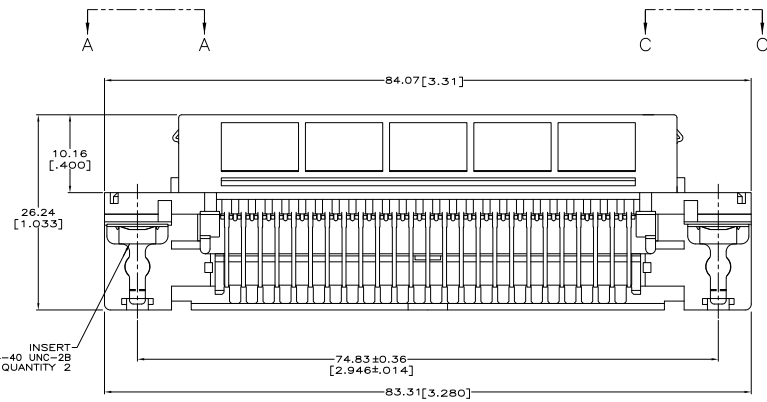


REV	DATE	DESCRIPTION	BY	CHK
GP 00				
B	REVISED FOR ECO-08-027327		DAWPHOR	BM WM
B1	REVISED FOR ECO-10-000444		TRAWNIO	KK HMR



SUGGESTED PRINTED CIRCUIT BOARD MOUNTING DIMENSIONS SCALE 2:1



- △ MATERIAL:
HOUSING, SUPPORT PLATE & ADAPTER COMB - POLYESTER, BLACK.
LATCH - ZINC PLATED CARBON STEEL.
INSERT - BRASS.
TERMINALS - HIGH STRENGTH COPPER ALLOY PLATED WITH EITHER 0.76μm [.000030] MIN GOLD PLATE OR GOLD FLASH OVER PALLADIUM NICKEL PLATE, 0.76μm [.000030] MIN TOTAL ON MATING SURFACE, 3.05μm [.000120] MIN TIN PLATE ON TAILS. ALL OVER 1.27μm [.000050] MIN NICKEL UNDERPLATE OVER ENTIRE TERMINAL.
- 2. BOARD LOCK - TIN PLATED CARBON STEEL.
- 3. THE CONTACT SURFACES OF THE TERMINALS ARE COATED WITH LUBRICANT.
- 4. CENTER-TO-CENTER SPACING OF TERMINALS IS 2.16 [.085] NOMINAL.
- △ ALL DIMENSIONS SHOWN ARE MAXIMUM UNLESS OTHERWISE SPECIFIED.
- △ TERMINAL 1 LOCATED IN THIS ROW FOR STANDARD ORIENTATION. SEE VIEW A-A.
- △ BOARD LOCK RETAINS CONNECTOR IN 1.58 [.062] THICK PC BOARD WITHOUT ADDITIONAL HARDWARE.
- △ BOARD LOCK LOCATES CONNECTOR FLUSH WITH TOP OF PC BOARD AND SPRING LOCKS BENEATH.
- △ CYLINDRICAL SHAPE OFFERS 180° OF SOLERING SURFACE.
- △ SURFACE AREA BELOW PC BOARD SHALL PASS SOLDERABILITY REQUIREMENTS IN ACCORDANCE WITH AMP SPEC 109-11-2. DISCOLORATION, SCRATCHES, SPOTS AND OTHER COSMETIC DEFICIENCIES TYPICAL OF BARREL PLATING PROCESSES ARE ACCEPTABLE PROVIDING PARTS PASS 24 HOUR EXPOSURE AT 95% RH AT 40°C WITHOUT EVIDENCE OF CORROSION.
- △ BRACKET SUPPLIED BY CUSTOMER. (OPTIONAL)
- △ TERMINAL 1 LOCATED IN THIS ROW FOR REVERSE ORIENTATION. SEE VIEW C-C.
- △ ONE LATCH ONLY, LOCATED AT CIRCUIT 1/26 END, P/N 6116794-5 AND 6116794-6.
- △ OBSOLETE PARTS: OBSOLETE CIS STREAMLINING PER D.RENAUD/D.SINISI

ORIENTATION	DESCRIPTION	PART NUMBER
REVERSE, SEE VIEW C-C	AS SHOWN	6116794-6
STANDARD, SEE VIEW A-A	NO LATCHES	6116794-5
REVERSE, SEE VIEW C-C	AS SHOWN	6116794-4
STANDARD, SEE VIEW A-A	NO LATCHES	6116794-3
REVERSE, SEE VIEW C-C	AS SHOWN	6116794-2
STANDARD, SEE VIEW A-A	AS SHOWN	6116794-1

THIS DRAWING IS A CONTROLLED DOCUMENT		REVISED FOR ECO-08-027327		REVISED FOR ECO-10-000444	
INCHES	25.4 MILLIMETERS	INCHES	25.4 MILLIMETERS	INCHES	25.4 MILLIMETERS
DECIMALS	0.0005 MILLIMETERS	DECIMALS	0.0005 MILLIMETERS	DECIMALS	0.0005 MILLIMETERS
FRACTIONS	1/10000 MILLIMETERS	FRACTIONS	1/10000 MILLIMETERS	FRACTIONS	1/10000 MILLIMETERS
UNITS	INCHES	UNITS	INCHES	UNITS	INCHES
SCALE	AS SHOWN	SCALE	AS SHOWN	SCALE	AS SHOWN
DATE	08/08/07	DATE	08/08/07	DATE	08/08/07
BY	DAWPHOR	BY	DAWPHOR	BY	DAWPHOR
CHKD	BM WM	CHKD	BM WM	CHKD	BM WM
APP'D		APP'D		APP'D	
CUSTOMER DRAWING		CUSTOMER DRAWING		CUSTOMER DRAWING	