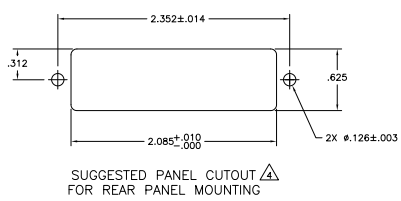
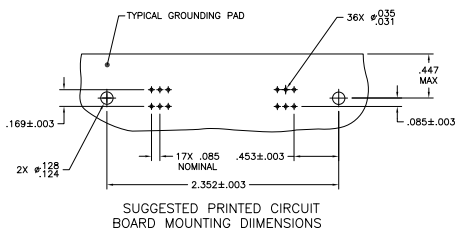
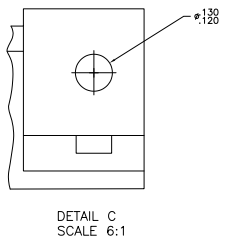
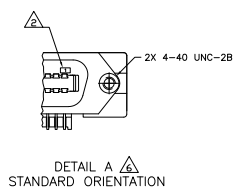
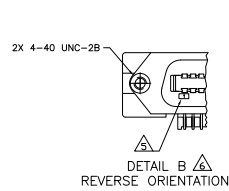
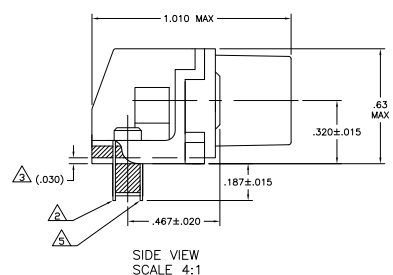
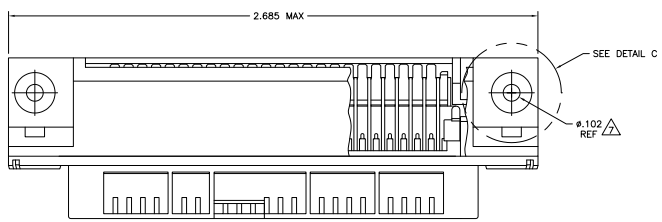


THIS DRAWING IS UNPUBLISHED
 ALL RIGHTS RESERVED
 © 2005 TRS ELECTRONICS CORPORATION

REV	DATE	DESCRIPTION	BY	CHKD
00				
T		REVISED PER ECO-08-027327	DMPPROB	EM WM
TT		REVISED PER ECO-10-200444	LSJMN10	KK AEG



- △ MATERIAL: HOUSING, BRACKET, ADAPTER COMB & PLATE - THERMOPLASTIC, BLACK, 94V-0 RATED TERMINALS - HIGH STRENGTH COPPER ALLOY PLATED WITH EITHER .00030 MIN GOLD PLATE OR GOLD FLASH OVER PALLADIUM NICKEL PLATE .00030 MIN TOTAL ON MATING SURFACE. .000120 MIN TIN-LEAD PLATE ON TAILS. ALL OVER .000050 MIN NICKEL UNDERPLATE OVER ENTIRE TERMINAL.
- △ TERMINAL 1 IS LOCATED IN THIS ROW FOR 552742-1 & -3.
- △ TERMINAL SUPPORT PLATE CLEARANCE FOR TERMINAL STRAIN RELIEF AND FLUX REMOVAL.
- △ PANEL THICKNESS RANGE: .062 MAX.
- △ TERMINAL 1 IS LOCATED IN THIS ROW FOR 552742-2.
- △ DETAILS A & B ARE VIEWED FROM MATING SIDE OF RECEPTACLE ASSEMBLY.
- △ FOR USE WITH A NO. 4 BT TYPE SELF TAPPING SCREW.
- △ OBSOLETE PARTS: OBSOLETE CIS STREAMLINING PER D.RENAUD/D.SINISI



REVISION	DESCRIPTION	PART NUMBER
△ OBSOLETE	THRU BOLT SEE DETAIL C	552742-3
△ OBSOLETE	SELF-TAPPING	552742-2
△ OBSOLETE	SELF-TAPPING	552742-1
	TYPE OF MOUNTING	DESCRIPTION
		PART NUMBER

THIS DRAWING IS A CONTROLLED DOCUMENT.		DATE	BY	DATE	BY
DESIGNED	DESIGNED	DATE	BY	DATE	BY
DRW	DRW	DATE	BY	DATE	BY
CHK	CHK	DATE	BY	DATE	BY
APP	APP	DATE	BY	DATE	BY
REV	REV	DATE	BY	DATE	BY
DATE	DATE	DATE	DATE	DATE	DATE
BY	BY	BY	BY	BY	BY
DATE	DATE	DATE	DATE	DATE	DATE
BY	BY	BY	BY	BY	BY