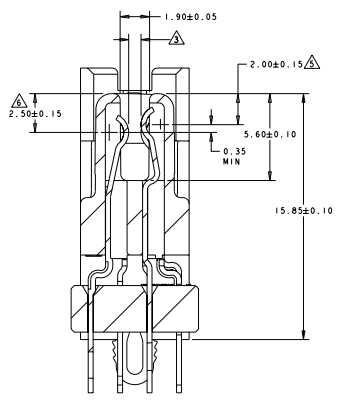
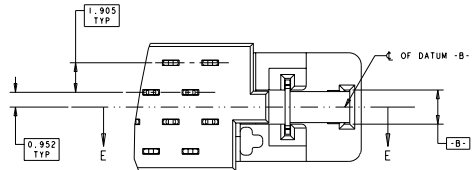
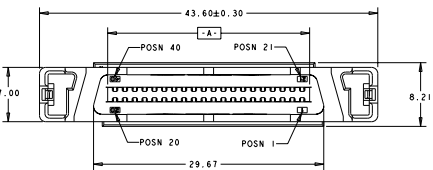
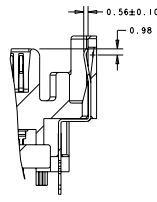


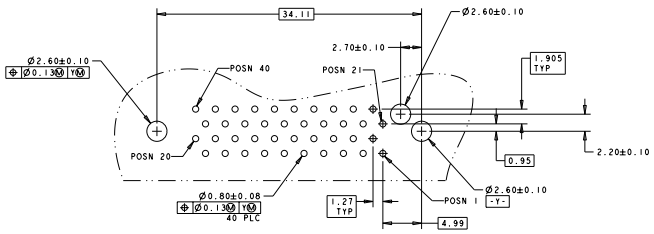
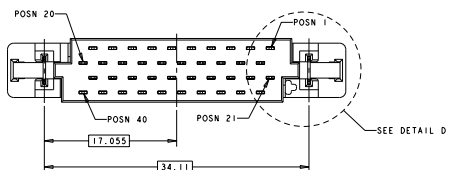
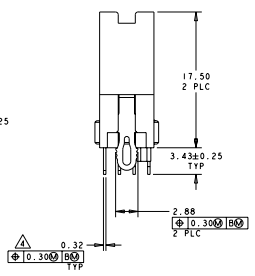
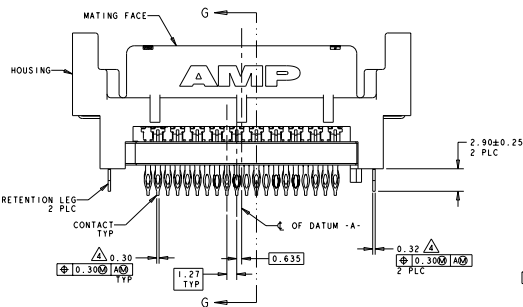
REV	DATE	DESCRIPTION	BY	CHK	APP
02	REVISED ECR-10-020893				



DETAIL D  
SCALE 8:1



SECTION E-E



RECOMMENDED PC BOARD MOUNTING DIMENSIONS COMPONENT SIDE  
SCALE 4:1

- △ HOUSING: LCP, UL 94V-0 RATED, BLACK
- CONTACTS: PHOSPHOR BRONZE
- RETENTION LEG: BRASS
- △ CONTACTS: 0.76µm GOLD FOR A LENGTH OF 1.90 MIN STARTING 0.40 MAX FROM MATING END. 1.27µm-3.81µm TIN-LEAD FOR A LENGTH OF 3.43 MIN FROM OPPOSITE END. BOTH OVER 1.27µm MIN NICKEL.
- △ CONNECTOR WILL ACCOMMODATE MATING PRINTED CIRCUIT BOARD OF 1.60±0.07 THICKNESS.
- △ POSITION TOLERANCE APPLIES AT CONTACT TIP ONLY.
- △ DIMENSION APPLIES TO CONTACTS 21, 22, 23, 26, 29, 32 AND 35 THRU 40.
- △ DIMENSION APPLIES TO CONTACTS 1 THRU 20, 24, 25, 27, 28, 30, 31, 33 AND 34.
- △ RETENTION LEG: 3.81µm MIN TIN-LEAD OVER 1.27µm MIN NICKEL.
- △ RECOMMENDED PC BOARD THICKNESS IS 2.36 TO 3.81.
- △ CONTACTS: 0.76µm GOLD FOR A LENGTH OF 1.90 MIN STARTING 0.40 MAX FROM MATING END. 1.27µm-3.81µm TIN FOR A LENGTH OF 3.43 MIN FROM OPPOSITE END. BOTH OVER 1.27µm MIN NICKEL.
- △ RETENTION LEG: 3.81µm MIN TIN OVER 1.27µm MIN NICKEL.

YES	△	788389-2
NO	△	788389-1
LEAD FREE	△	PART NUMBER

MANUFACTURER'S PART NUMBER 788389-2 AMP RECEP EXTENDED HEIGHT, VERTICAL, 40 POSN. SERIES 1, CHAMP BLINDMATE	AMP RECEP EXTENDED HEIGHT, VERTICAL, 40 POSN. SERIES 1, CHAMP BLINDMATE	DATE: 12/15/83 DRAWN BY: J. J. HANCOCK CHECKED BY: J. J. HANCOCK PART NUMBER: 788389-2 SCALE: 4:1
--	--	---