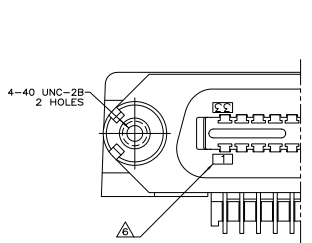
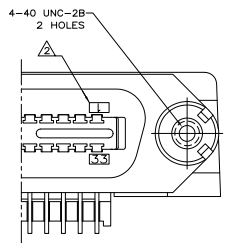
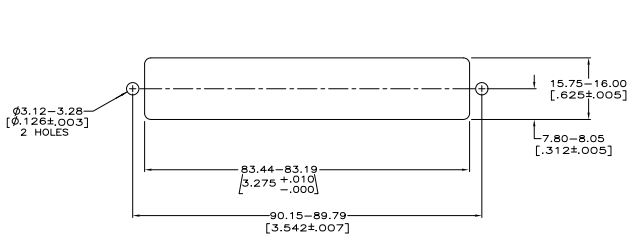
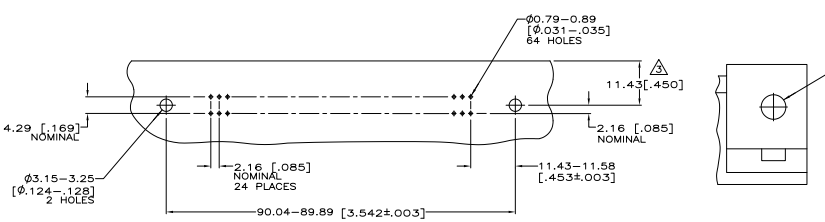
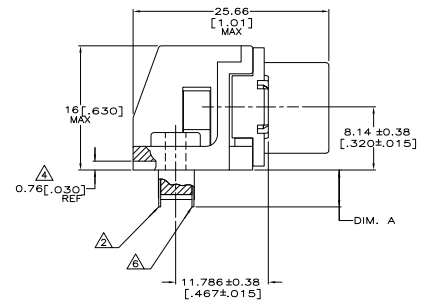
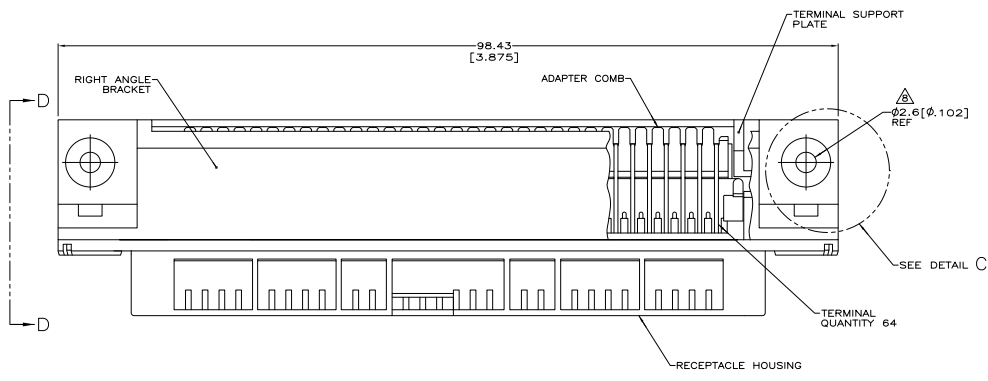


REV	DATE	DESCRIPTION	BY	CHK	APP
GP 00					
D		REVISED PER EDC-08-007327			



- △ MATERIAL: HOUSING, BRACKET, PLATE AND COMB - THERMOPLASTIC, BLACK, 94V-0 RATED.
- △ TERMINALS - HIGH STRENGTH COPPER ALLOY PLATED WITH EITHER 0.76µm [0.00030] MIN GOLD PLATE OR GOLD FLASH OVER PALLADIUM NICKEL PLATE, 0.76µm [0.00030] MIN TOTAL ON MATING SURFACE, 3.05µm [0.00120] MIN TIN PLATE ON TAILS. ALL OVER 1.27µm [0.00050] MIN NICKEL UNDERPLATE OVER ENTIRE TERMINAL.
- △ THREADED INSERT - #4-40 UNC, BRIGHT ZINC PLATED BRASS.
- △ TERMINAL 1 IS LOCATED IN THIS ROW FOR STANDARD ORIENTATION, 5552744-1, AND -5.
- △ MAXIMUM DIMENSION FOR REAR PANEL MOUNTING.
- △ TERMINAL SUPPORT PLATE CLEARANCE FOR TERMINAL STRAIN RELIEF AND FLUX REMOVAL.
- △ MAXIMUM PANEL THICKNESS: 1.57[.062].
- △ TERMINAL 1 IS LOCATED IN THIS ROW FOR REVERSE ORIENTATION, 5552744-2, AND -6 ONLY.
- △ DETAILS "A" AND "B" ARE VIEWED FROM MATING SIDE OF RECEPTACLE ASSEMBLY.
- △ FOR USE WITH A NO.4 BT TYPE SELF-TAPPING SCREW.
- △ 5552744-1, -2, -5 & -6 ARE TAPPED 4-40; -7 AND -8 USE 4-40 THREADED INSERTS.
- △ INSERT SHALL WITHSTAND 8 INCH-POUNDS OF TORQUE WITHOUT CRACKING HOUSING OR LOOSENING.



TYPE OF MOUNTING	DESCRIPTION	PART NUMBER
△ THREADED INSERT	2.54±0.38 [1.00±.015]	SEE DETAIL B △ 5552744-8
△ THREADED INSERT	2.54±0.38 [1.00±.015]	SEE DETAIL A △ 5552744-7
△ TAPPED HOLE	2.54±0.38 [1.00±.015]	SEE DETAIL B △ 5552744-6
△ TAPPED HOLE	2.54±0.38 [1.00±.015]	SEE DETAIL A △ 5552744-5
△ TAPPED HOLE	4.75±0.38 [1.87±.015]	SEE DETAIL B △ 5552744-2
△ TAPPED HOLE	4.75±0.38 [1.87±.015]	SEE DETAIL A △ 5552744-1

THIS DRAWING IS A CONTROLLED DOCUMENT:		BY	DATE	BY	DATE
DESIGNED	DESIGNED	BY	DATE	BY	DATE
DRAWN	DRAWN	BY	DATE	BY	DATE
CHECKED	CHECKED	BY	DATE	BY	DATE
APPROVED	APPROVED	BY	DATE	BY	DATE