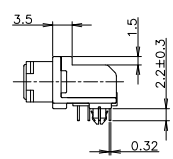
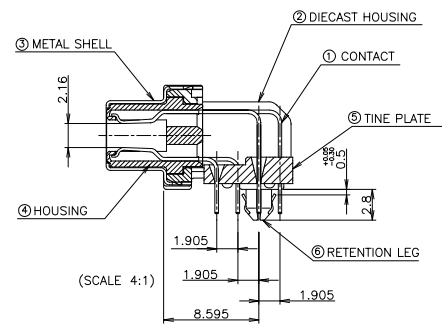
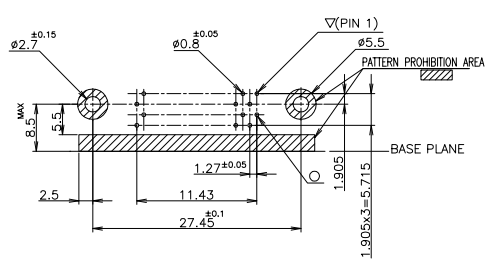


LOC		DIST		REVISIONS			
P	LTR	REVISED	DESCRIPTION	DATE	DNW	APVD	
J	A	REVIS	ECR-05-007904	29JUL05	C.Z	S.Y	

ITEM	MATERIAL	FINISH
①	COPPER ALLOY	NICKEL UNDER PLATE ALL OVER CONTACT AREA ; Au(0.0003) SOLDER TINE AREA ; TIN PLATE
②	ZINC	NICKEL PLATING
③	STEEL t0.25	NICKEL PLATE OVER COPPER UNDERPLATE
④	THERMO-PLASTIC	COLOR; BLACK
⑤		
⑥	COPPER ALLOY	TIN PLATE OVER NICKEL UNDERPLATE

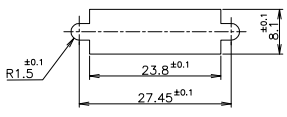
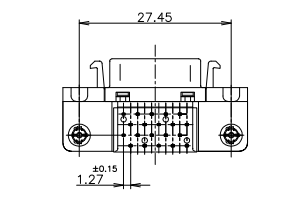
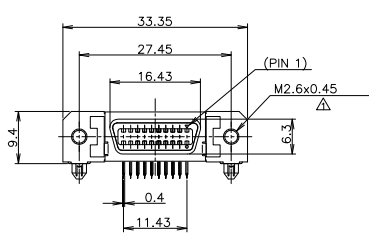
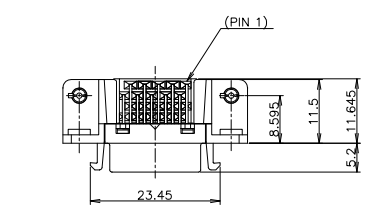


- △ RECOMMENDED SCREW SIZE ; M2.6 PANHEAD SCREW(L=5)
- 2 RECOMMENDED P.C BOARD THICKNESS ; 0.6~1.0 (REF)
- 3 INSERTION FORCE OF RETENTION LEG TO P.C.B; 21.56N(2.2kgf) MAX/CONNECTOR.
- 4 RETENTIVITY OF RETENTION LEG TO P.C.B; 4.9N(0.5kgf) MIN/CONNECTOR.



RECOMMENDED PC BOARD MOUNTING DIMENSION COMPONENT SIDE

LEAD FREE



RECOMMENDED PANEL CUTOUT THK, 2mm MAX

THIS DRAWING IS A CONTROLLED DOCUMENT.		DNW COREL WANG 31AU004	TYCO Electronics AMP K.K.
		CHK STEVEN YAO 31AU004	Kawasaki, Japan
		APPV TLENOMOTO 31AU004	
		PRODUCT SPEC: 108-60043	RECEPTACLE HDR ASSY (2.2mm) RETENTION LEG TYPE STANDARD CHAMP.050 SERIES (II)
		APPLICATION SPEC:	SIZE CASE CODE DRAWING NO. RESTRICTED TO
		WEIGHT:	A2 00779 C=5178240
MATERIAL: SEE TABLE		FINISH: SEE TABLE	CUSTOMER DRAWING SCALE: 2:1 SHEET 1 OF 1 REV A