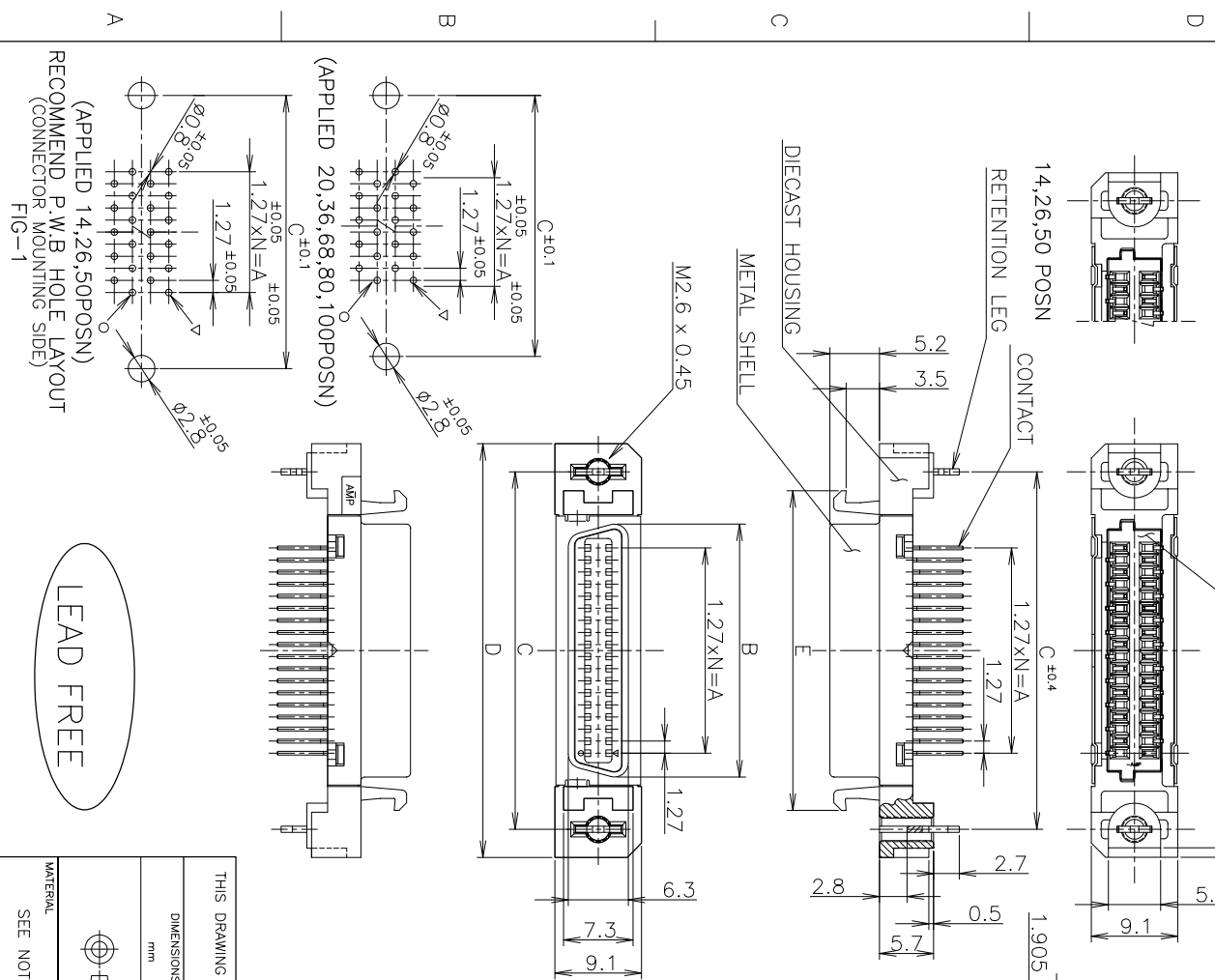


REV	DESCRIPTION	DATE	BY	APP'D
1	REVISED ECR-10-026450	27DEC2010	AZ	MW



- 1 USED SCREW SIZE: M2.6 PANHEAD SCREW.
- 2 CONNECTOR TO BE MATED: 175677.115751
- 3 MATERIAL AND FINISH:
  - \* CONTACT: PHOS-BRONZE
  - \* FIN: AU PLATING OVER IN UNDER PLATING
- 4 RECOMMEND P.W.B THICKNESS: 1.6mm

QTY	UNIT	DESCRIPTION	UNIT PRICE	TOTAL PRICE	WEIGHT	MATERIAL	FINISH	PLATING		
39	EA	AMP	61.90	61.55	71.45	65.55	54.53	49.53	80	3-5917334-0
49	EA	RETENTION LEG	74.60	74.25	84.15	78.25	67.23	62.23	100	2-5917334-9
33	EA	HOUSING	54.20	53.93	63.83	57.93	46.91	41.91	68	2-5917334-8
24	EA	CONTACT	42.80	42.50	52.40	46.50	35.48	30.48	50	2-5917334-7
17	EA	METAL SHELL	33.90	33.61	43.51	37.61	26.59	21.59	36	2-5917334-5
12	EA	DEICAST HOUSING	27.60	27.26	37.16	31.26	20.24	15.24	26	2-5917334-4
9	EA	RENTENTION LEG	23.80	23.45	33.35	27.45	16.43	11.43	20	2-5917334-2
6	EA	METAL SHELL	19.90	19.64	29.54	23.64	12.62	7.62	14	2-5917334-1
39	EA	AMP	61.90	61.55	71.45	65.55	54.53	49.53	80	1-5917334-0
49	EA	RETENTION LEG	74.60	74.25	84.15	78.25	67.23	62.23	100	1-5917334-9
33	EA	HOUSING	54.20	53.93	63.83	57.93	46.91	41.91	68	1-5917334-8
24	EA	CONTACT	42.80	42.50	52.40	46.50	35.48	30.48	50	1-5917334-7
17	EA	METAL SHELL	33.90	33.61	43.51	37.61	26.59	21.59	36	1-5917334-5
12	EA	DEICAST HOUSING	27.60	27.26	37.16	31.26	20.24	15.24	26	1-5917334-4
9	EA	RENTENTION LEG	23.80	23.45	33.35	27.45	16.43	11.43	20	1-5917334-2
6	EA	METAL SHELL	19.90	19.64	29.54	23.64	12.62	7.62	14	1-5917334-1

THIS DRAWING IS A CONTROLLED DOCUMENT.

APPROVED: STEVEN YAO (01SEP04)

DESIGNED: COREL WANG (01SEP04)

CHECKED: COREL WANG (01SEP04)

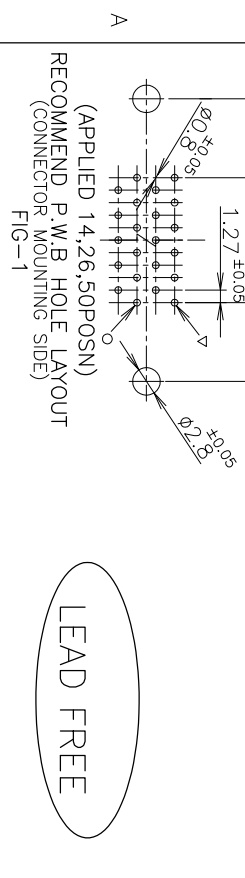
DATE: 01SEP04

NAME: Tyco Electronics Kawasaki, Japan

REC HEADER ASSY, VERTICAL W/RETENTION LEG CHAMP .050 SERIES (II) STD-TYPE (M2.6)

SIZE: A3 (00779) C=5917334

SCALE: 2:1 SHEET: 1 OF 1 REV: 01



LEAD FREE