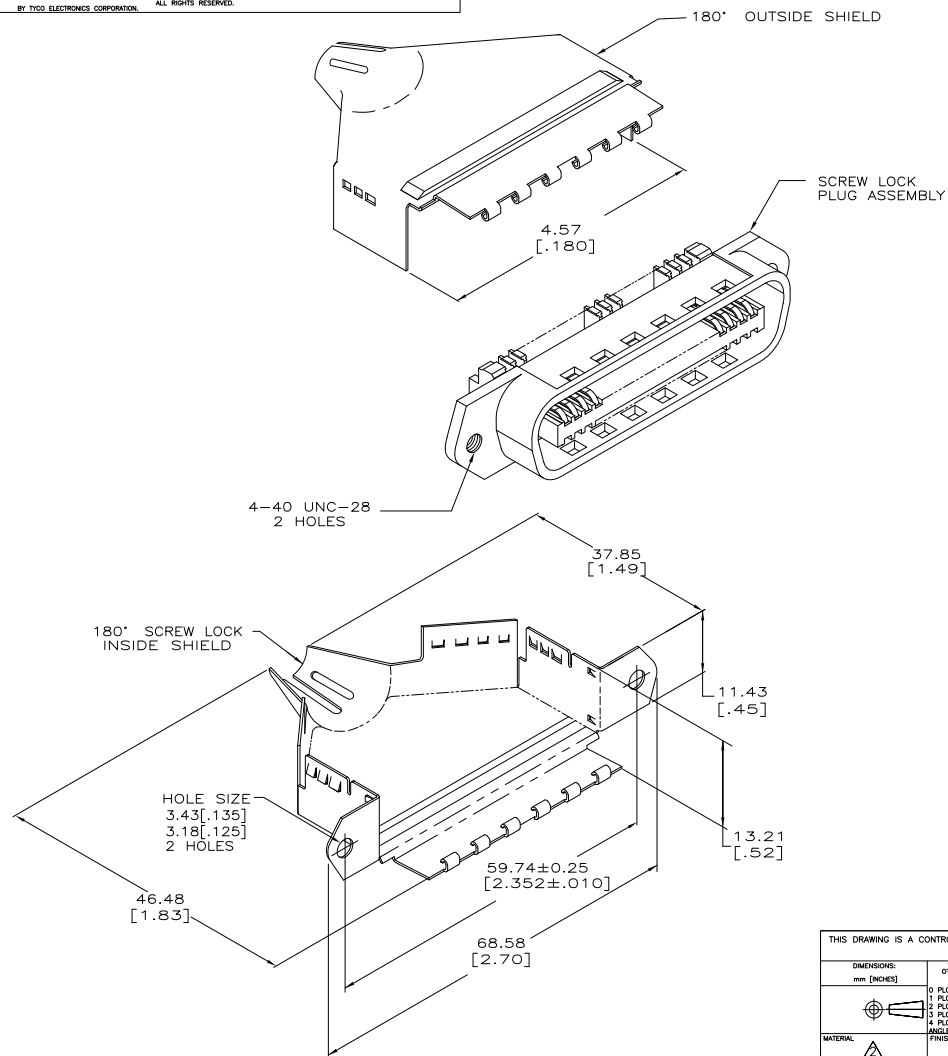


THIS DRAWING IS UNPUBLISHED. RELEASED FOR PUBLICATION  
BY TYCO ELECTRONICS CORPORATION. ALL RIGHTS RESERVED.

LOC		DIST		REVISIONS				
GP	00	P	LTR	DESCRIPTION	DATE	OWN	APVD	
				REVISED PER ECO-08-007327	05SEP08	RM	WM	



1. THIS KIT SHIPPED NOT ASSEMBLED.
- ⚠ MATERIAL: SHIELDS - BRIGHT NICKEL PLATED CARBON STEEL.  
PLUG HOUSING - POLYPHENYLENE OXIDE, BLACK.  
TERMINAL - HIGH STRENGTH COPPER ALLOY PLATED WITH 0.76μm [.000030] MIN GOLD OR GOLD FLASH OVER PALLADIUM NICKEL PLATE, 0.76μm [.000030] MIN TOTAL ON MATING SURFACE. 1.27μm [.000050] MIN NICKEL UNDERPLATE OVER ENTIRE TERMINAL.
- ⚠ WIRE SIZE: 24 OR 26 AWG SOLID OR 24 AWG 7 STRANDS OF COPPER CONDUCTORS. MAXIMUM INSULATION DIAMETER OF 1.14 [.045] IS ACCEPTABLE FOR MOST APPLICATIONS.
4. CABLE RANGE: Ø6.35-12.7 [.250-.500].
5. CENTER-TO-CENTER SPACING OF TERMINALS 2.16 [.085] NOMINAL.
- ⚠ WIRE SIZE: 26-27-28 AWG 7 STRANDS OF COPPER CONDUCTORS. MAXIMUM INSULATION DIAMETER OF 1.14 [.045] IS ACCEPTABLE FOR MOST APPLICATIONS.
- ⚠ DIMENSIONS ARE MAXIMUM UNLESS OTHERWISE SPECIFIED.
8. CORING IS AN OPTIONAL CONFIGURATION AND IS AT THE DISCRETION OF AMP.
- ⚠ OBSOLETE

POLY-BAG		B	⚠	554951-2
PACKAGED		E	⚠	554951-1
		SLOT WIRE SIZE		PART NUMBER
		Tyco Electronics Corporation		
		Harrisburg, PA 17105-3608		
		PLUG KIT, 36 POSITION, SCREW LOCK, WITH 4-40 HOLES, SHIELDED CHAMP-LOK		
		SIZE	CAGE CODE	DRAWING NO
		A2	00779	C-554951
		RESTRICTED TO		
CUSTOMER DRAWING		SCALE	2:1	SHEET 1 of 1

AMP 1471-9 REV 31MAR2000