

4

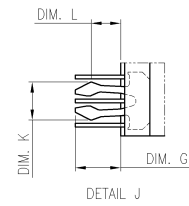
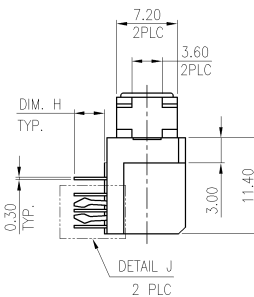
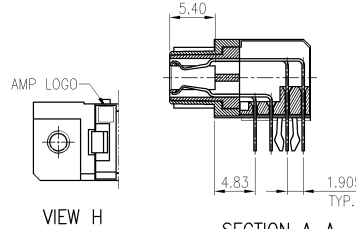
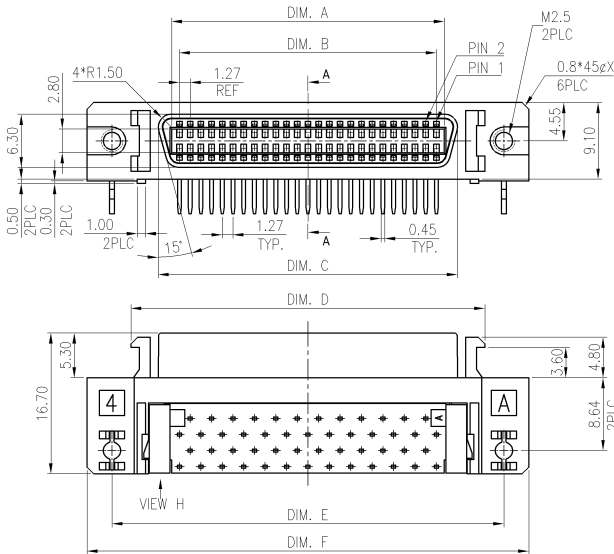
3

2

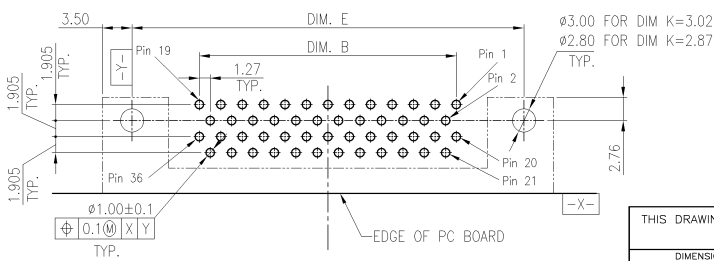
1

THIS DRAWING IS UNPUBLISHED. RELEASED FOR PUBLICATION
 © COPYRIGHT BY TYCO ELECTRONICS CORPORATION. ALL RIGHTS RESERVED.

| LOC | DIST | REVISIONS | | | | |
|-----|------|-------------------------|---------|-----|------|--|
| P | LTR | DESCRIPTION | DATE | DWN | APVD | |
| DW | - | | | | | |
| | A2 | REVISED (ECR-09-020360) | 14SEP09 | JL | WK | |



- NOTES:
- MATERIAL:
 - HOUSING: THERMOPLASTIC (LCP), UL94V-0; COLOR: BLACK.
 - SPACER: THERMOPLASTIC (LCP), UL94V-0; COLOR: BLACK.
 - CONTACTS: PHOSPHOR BRONZE
 - SHELL: ZINC ALLOY
 - BOARD LOCK: PHOSPHOR BRONZE
 - FINISH:
 - CONTACT:
 - 0.762μm (30μ") GOLD PLATING ON CONTACT AREA.
 - 2.54μm (100μ") MIN. BRIGHT-TIN PLATING ON SOLDER TAIL AREA.
 - 1.27μm (50μ") MIN. NICKEL UNDERPLATING OVERALL,
 - 2.54μm (100μ") MIN. BRIGHT-TIN PLATING ON SOLDER TAIL AREA.
 - 1.27μm (50μ") MIN. NICKEL UNDERPLATING OVERALL,
 - NET WEIGHT: 14POS.=8gram; 26POS.=9gram; 36POS.=10gram.
 - WAVE SOLDER CAPABLE TO 265°C PER TE SPEC. 109-202, CONDITION B.



| AVAILABLE | T&R | 1.60 | 2.87 | 2.80 | 3.80 | 43.51 | 37.61 | 33.11 | 26.61 | 21.59 | 23.46 | 36 | 4-1734586-3 |
|----------------|-----------|-------|-------|-------|-------|-------|-------|-------|-------|-------|-------|-----------------|-------------|
| | | | | | | 37.16 | 31.26 | 26.76 | 20.26 | 15.24 | 17.11 | 26 | 4-1734586-2 |
| | | | | | | 29.54 | 23.64 | 19.14 | 12.64 | 7.62 | 9.49 | 14 | 4-1734586-1 |
| AVAILABLE | T&R | 2.35 | 3.02 | 2.80 | 3.80 | 43.51 | 37.61 | 33.11 | 26.61 | 21.59 | 23.46 | 36 | 1-1734586-3 |
| | | | | | | 37.16 | 31.26 | 26.76 | 20.26 | 15.24 | 17.11 | 26 | 1-1734586-2 |
| | | | | | | 29.54 | 23.64 | 19.14 | 12.64 | 7.62 | 9.49 | 14 | 1-1734586-1 |
| NOT AVAILABLE | TRAY | 0.70 | 3.02 | 2.40 | 2.40 | 29.54 | 23.64 | 19.14 | 12.64 | 7.62 | 9.49 | 14 | 1734586-2 |
| TOOLING STATUS | PKG. TYPE | DIM L | DIM K | DIM H | DIM G | DIM F | DIM E | DIM D | DIM C | DIM B | DIM A | NO. OF CONTACTS | PART NUMBER |
| | | | | | | | | | | | | | |

THIS DRAWING IS A CONTROLLED DOCUMENT.

DWN: H. HUANG 12SEP2007
 CHK: S. HOU 12SEP2007
 APVD: W. J. KE 12SEP2007

Tyco Electronics Tyco Electronics Corporation
 Taipei, Taiwan

PRODUCT SPEC: 108-57642
 QUALIFICATION TEST REPORT: 501-57748

CHAMP .050 SERIES, RIGHT ANGLE THRU-HOLE

MATERIAL: SEE NOTE
 FINISH: SEE NOTE

SIZE: A3 CAGE CODE: 00779 DRAWING NO: 1734586
 WEIGHT: RESTRICTED TO: -

CUSTOMER DRAWING SCALE: - SHEET: 1 of 4 REV: A2

4

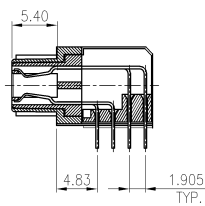
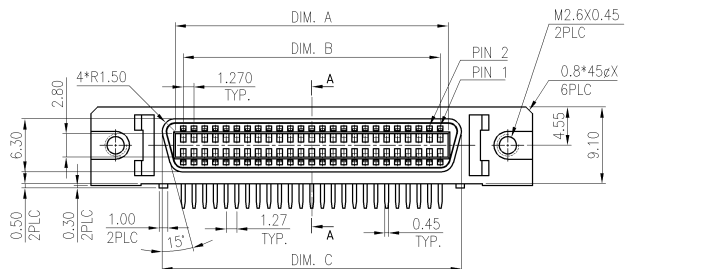
3

2

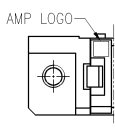
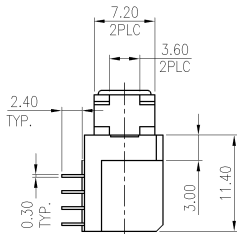
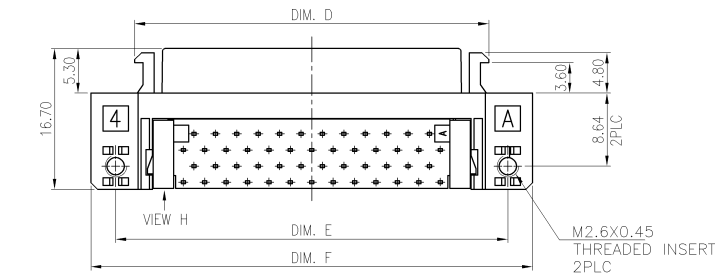
1

THIS DRAWING IS UNPUBLISHED. RELEASED FOR PUBLICATION
 © COPYRIGHT BY TYCO ELECTRONICS CORPORATION. ALL RIGHTS RESERVED.

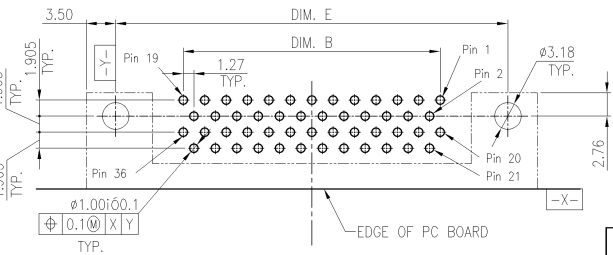
| LOC | DIST | REVISIONS | | | |
|--------------|------|-------------|------|-----|------|
| P | LTR | DESCRIPTION | DATE | DWN | APVD |
| SEE SHEET 1. | | | | | |



SECTION A-A



VIEW H



RECOMMENDED PCB LAYOUT

| NOT AVAILABLE | TRAY | 37.16 | 31.26 | 26.76 | 20.26 | 15.24 | 17.11 | 26 | 2-1734586-2 |
|----------------|-----------|-------|-------|-------|-------|-------|-------|-----------------|-------------|
| | | 29.54 | 23.64 | 19.14 | 12.64 | 7.62 | 9.49 | 14 | 2-1734586-1 |
| TOOLING STATUS | PKG. TYPE | DIM F | DIM E | DIM D | DIM C | DIM B | DIM A | NO. OF CONTACTS | PART NUMBER |

THIS DRAWING IS A CONTROLLED DOCUMENT.

| | | | | | |
|-------------|--|---------------------------|--|-----------|--|
| DIMENSIONS: | TOLERANCES UNLESS OTHERWISE SPECIFIED: | DWN | H. HUANG | 12SEP2007 | Tyco Electronics Corporation Taipei, Taiwan |
| MM | 0 PLC ± - | CHK | S. HOU | 12SEP2007 | |
| | 1 PLC ± 0.35 | APVD | W.J. KE | 12SEP2007 | |
| | 2 PLC ± 0.25 | NAME | CHAMP .050 SERIES, RIGHT ANGLE THRU-HOLE | | |
| | 3 PLC ± - | PRODUCT SPEC | | | |
| | 4 PLC ± - | QUALIFICATION TEST REPORT | | | |
| | ANGLES ± - | WEIGHT | SIZE CAGE CODE DRAWING NO. RESTRICTED TO | | |
| MATERIAL | FINISH | A3 00779 C-1734586 | | | |
| SEE NOTE | SEE NOTE | CUSTOMER DRAWING | | SCALE | SHEET 2 OF 4 REV A2 |

AMP 1470-19 REV 31MAR2000

4

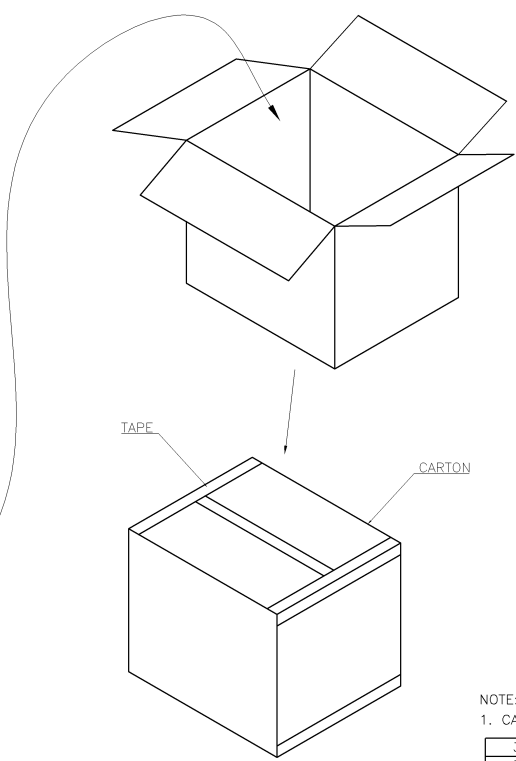
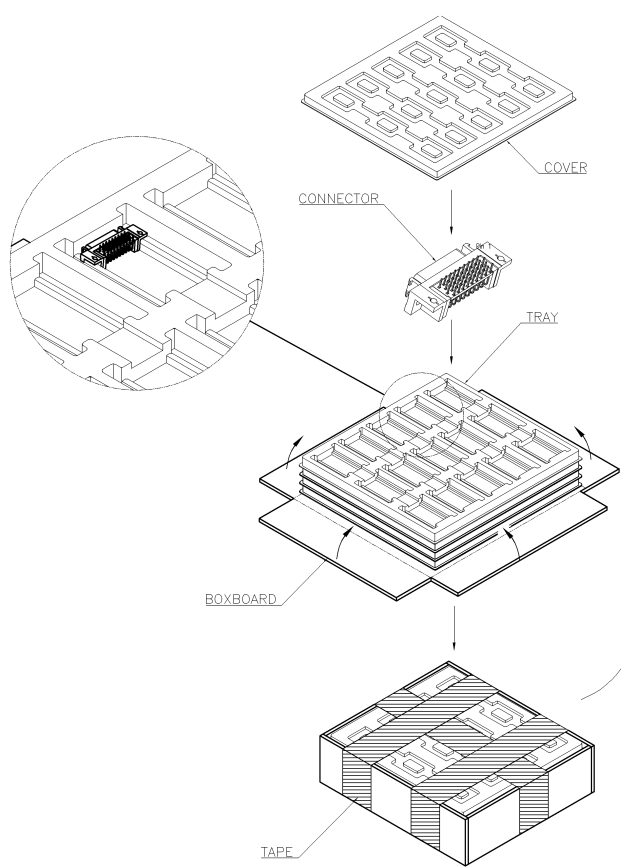
3

2

1

THIS DRAWING IS UNPUBLISHED. RELEASED FOR PUBLICATION
 © COPYRIGHT BY TYCO ELECTRONICS CORPORATION. ALL RIGHTS RESERVED.

| LOC | DIST | REVISIONS | | | |
|-----|------|--------------|------|-----|------|
| P | LTR | DESCRIPTION | DATE | DWN | APVD |
| DW | - | SEE SHEET 1. | | | |



NOTE:
1. CARTON DIMENSIONS: 370 X 310 X 200.

| 300 | 2 PCS | 600 | 26 |
|------------------|----------------------|----------|--------------------|
| 360 | 2 PCS | 720 | 14 |
| PCS/ BOXBOARD | BOXBOARDS/ CARTON | QUANTITY | NO. OF CONTACTS |

THIS DRAWING IS A CONTROLLED DOCUMENT.

| | | | |
|-------------------|---|--|--|
| DIMENSIONS: MM | TOLERANCES UNLESS OTHERWISE SPECIFIED: 0 PLC ± .1 1 PLC ± .1 2 PLC ± .1 3 PLC ± .1 4 PLC ± .1 ANGLES ± .1 | DWN H. HUANG 12SEP2007 CHK S. HOU 12SEP2007 APVD W.J. KE 12SEP2007 | NAME Tyco Electronics Corporation Taipei, Taiwan |
| MATERIAL | FINISH | PRODUCT SPEC APPLICATION SPEC WEIGHT | SIZE CAGE CODE DRAWING NO A3 00779 C-1734586 |
| | | CUSTOMER DRAWING | RESTRICTED TO SCALE — SHEET 3 of 4 REV A2 |

4

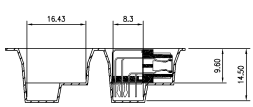
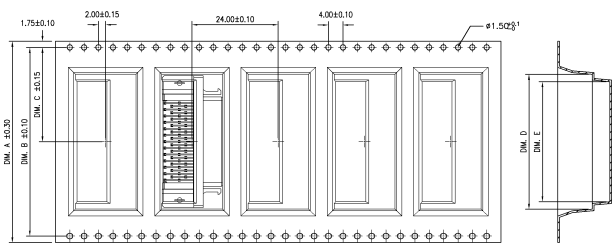
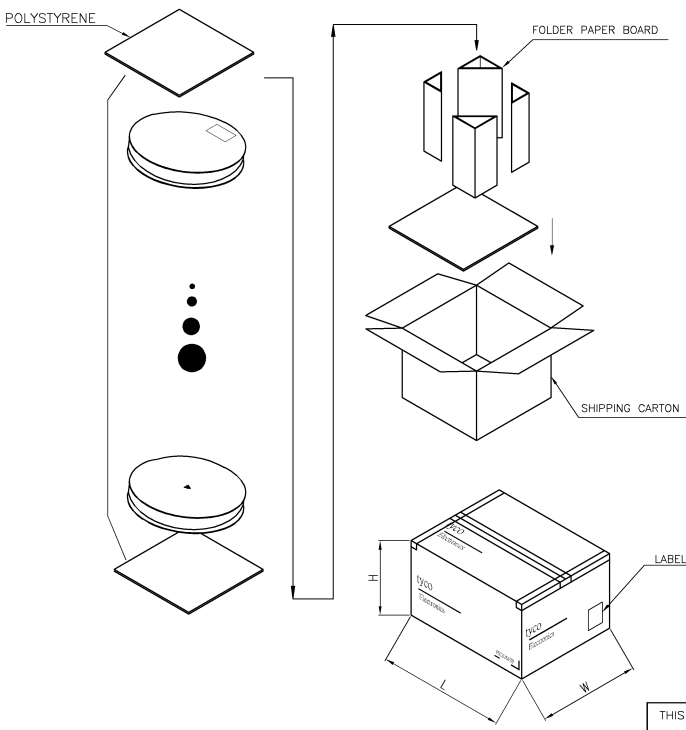
3

2

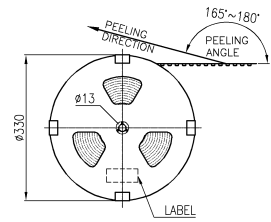
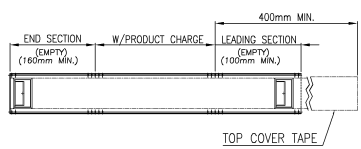
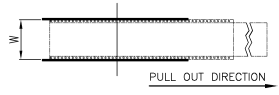
1

THIS DRAWING IS UNPUBLISHED. RELEASED FOR PUBLICATION
 COPYRIGHT BY TYCO ELECTRONICS CORPORATION. ALL RIGHTS RESERVED.

| LOC | DIST | REVISIONS | | | |
|--------------|------|-------------|------|-----|------|
| P | LTR | DESCRIPTION | DATE | DWN | APVD |
| SEE SHEET 1. | | | | | |



- NOTES:
 1. MATERIAL :
 1.1 EMBOSSD CARRIER: PS
 1.2 COVER TAPE: PS
 1.3 SHIPPING CARTON: CORRUGATED FIBER
 2. SHIPPING CARTON: L=350, W=350, H=340
 3. PEELING RESISTANCE: 10.2gf~71.4gf.
 4. PEELING SPEED: 300mm/minutes.



| 39.8 | 43.81 | 34.20 | 68.40 | 72 | 100 | 4 | 400 | 36 |
|-------|-------|-------|-------|-------|----------|---------------|------------------|-----------------|
| 33.4 | 37.46 | 26.25 | 52.50 | 56 | 100 | 5 | 500 | 26 |
| 25.8 | 29.84 | 26.25 | 52.50 | 56 | 100 | 6 | 600 | 14 |
| DIM.E | DIM.D | DIM.C | DIM.B | DIM.A | PCS/REEL | REEL / CARTON | QUANTITY/ CARTON | NO. OF CONTACTS |

THIS DRAWING IS A CONTROLLED DOCUMENT.

| | | | | | |
|----------------|--|-------------------------|-----------------------|---|---------------|
| DIMENSIONS: MM | TOLERANCES UNLESS OTHERWISE SPECIFIED: | DWN: H. HUANG 12SEP2007 | CHK: S. HOU 12SEP2007 | Tyco Electronics Corporation Taipei, Taiwan | |
| MATERIAL | FINISH | APVD: W.J. KE 12SEP2007 | NAME | CHAMP .050 SERIES, RIGHT ANGLE THRU-HOLE | |
| | | PRODUCT SPEC | SIZE | CAGE CODE | DRAWING NO |
| | | APPLICATION SPEC | A3 | 00779 | C=1734586 |
| | | WEIGHT | CUSTOMER DRAWING | | RESTRICTED TO |
| | | | SCALE | SHEET | 4 OF 4 |
| | | | | | REV A2 |