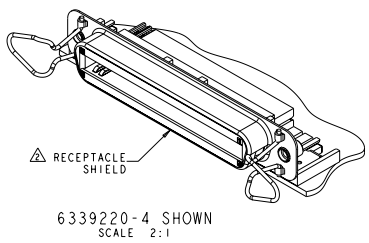
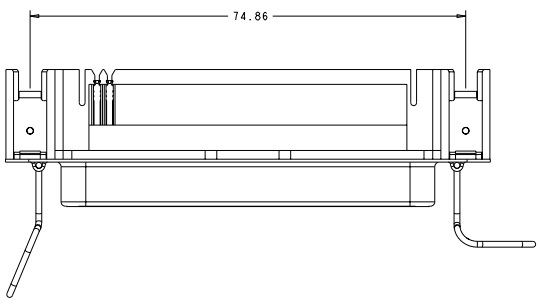
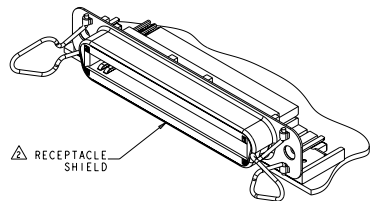
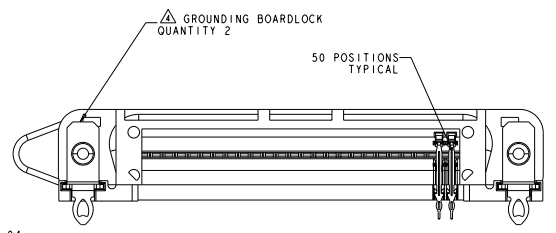
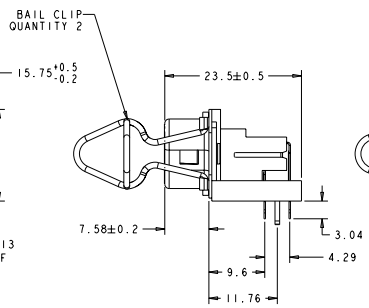
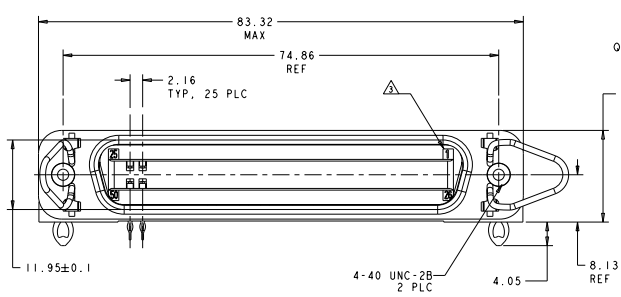


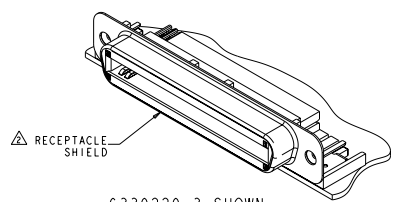
| REV | DATE | DESCRIPTION | BY | CHK | APP |
|-----|------|------------------------------|--------|-----|-----|
| 0 | | RELEASED PER EC 0513-0542-04 | MMH/JS | JG | MM |
| 01 | | REVISED PER ECO-99-025689 | MMH/JS | KK | MM |



- △ MATERIAL:
HOUSING - 94V0 GLASS FILLED PBT, BLACK.
BAIL CLIPS - PASSIVATED STAINLESS STEEL.
SHIELD - NICKEL PLATED CARBON STEEL.
- TERMINAL - HIGH STRENGTH COPPER ALLOY. CONTACT AREA SELECTIVELY PLATED WITH .76um GOLD EYE OF NEEDLE SELECTIVELY PLATED WITH TIN NICKEL UNDERPLATE OVER ENTIRE CONTACT.
- BOARDLOCK - BRASS, TIN PLATING WITH NICKEL UNDERPLATE.
- △ SHIELD IS ASSEMBLED TO RECEPTACLE ASSEMBLY BEFORE SHIPMENT.
- △ TERMINAL #1 LOCATED IN THIS ROW FOR STANDARD ORIENTATION.
- △ GROUNDING BOARDLOCK RETAINS CONNECTOR IN 1.57mm THICK PC BOARD WITHOUT ADDITIONAL HARDWARE.
- 5. CHAMP SEATING TOOL P/N 1338878-1 OR EQUIVALENT REQUIRED TO INSERT CONNECTOR INTO PCB. FOLLOW INSTRUCTION SHEET 408-8329.
- △ OBSOLETE PARTS: OBSOLETE CIS STREAMLINING PER D.RENAUD/D.SINISI



6339220-1 SHOWN
SCALE 2:1



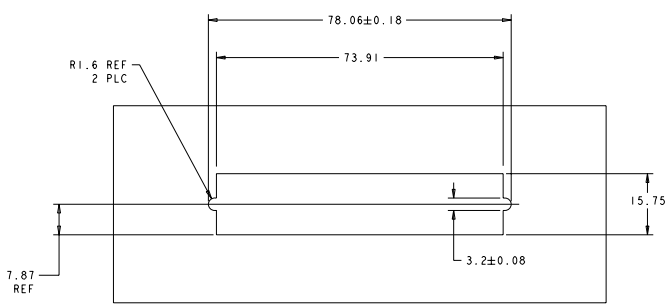
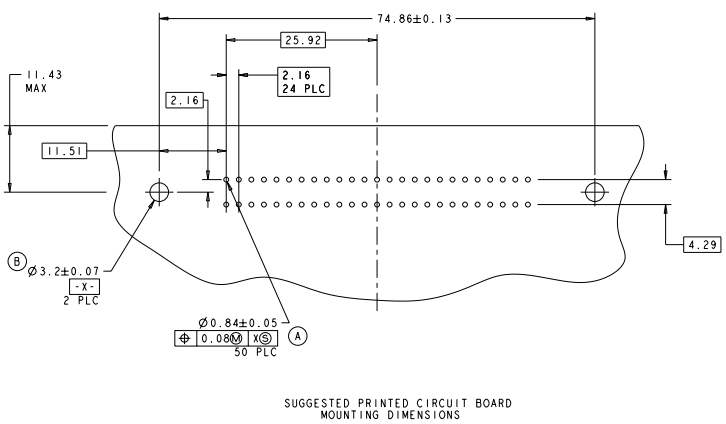
6339220-3 SHOWN
SCALE 2:1

**COPYRIGHT 2005
 ALL RIGHTS RESERVED
 TYCO ELECTRONICS CORP**

| | | |
|------------|-----|------------------------|
| △ OBSOLETE | YES | 6339220-4 |
| | NO | 6339220-3 |
| △ OBSOLETE | YES | 6339220-1 |
| | | BAIL LOCKS PART NUMBER |

| | | |
|--|--|---|
| TITLE: RECEPTACLE ASSEMBLY, SHIELDED, 50 POSITION, RIGHT ANGLE, CHAMP EYE OF NEEDLE WITH BOARDLOCK GROUND PART NUMBER: 6339220-1 SCALE: 2:1 SHEET: 1 OF 2 | AGENCY: ORSEPDS WILLIAMSLEY: ORSEPDS STATE: CA CITY: MILBURN ZIP: 07077 PHONE: 973-261-1000 FAX: 973-261-1001 E-MAIL: SALES@TYCOELECTRONICS.COM WWW: WWW.TYCOELECTRONICS.COM | AMP Incorporated Harrisburg, PA 17105-3600 |
|--|--|---|

| REV. NO. | | REVISIONS | |
|----------|----|-------------|------|
| DATE | BY | DESCRIPTION | DATE |
| 00 | GP | SEE SHEET 1 | |



RECOMMENDED SPECIFICATIONS FOR PLATED THROUGH HOLES

| ID | DRILL SIZE | DRILLED HOLE DIAMETER | CU PLATING THICKNESS | SN/PB PLATING THICKNESS | HOLE DIAMETER AFTER PLATING | CU HARDNESS (KNOOP) |
|----|-------------------|-----------------------|----------------------|-------------------------|-----------------------------|---------------------|
| A | 0.98 OR NO. 62 | 0.97 | 0.03-0.05 | 0.0076-0.03 | 0.79-0.89 | 150 MAX |
| B | 3.3 OR NO. 30 | 3.3 | 0.03-0.05 | 0.0076-0.03 | 3.13-3.27 | 150 MAX |

**COPYRIGHT 2005
 ALL RIGHTS RESERVED
 TYCO ELECTRONICS CORP**

| | | |
|---|---|---|
| DATE: 05/11/05 DRAWN BY: J. WILKINSON CHECKED BY: J. WILKINSON APPROVED BY: J. WILKINSON | AGENCY: ORSEP/PS M. WILKINSON 108-1868 APPLICATION NO. | AMP Incorporated Harrisburg, PA 17105-3600 RECEPTACLE ASSEMBLY, SHIELDED, 50 POSITION, RIGHT ANGLE, CHAMP, EYE OF NEEDLE WITH BOARD/COP/ GROUND STATE CASE CODE (SEE PAGE 40) A 00779 6339220 CUSTOMER DRAWING |
|---|---|---|