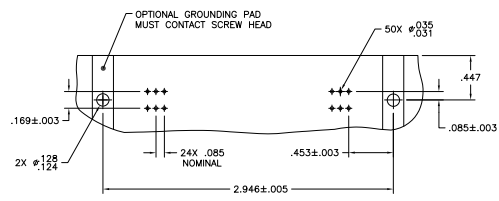
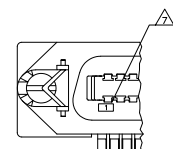


THIS DRAWING IS UNPUBLISHED. REVISIONS FOR VARIATION. ALL RIGHTS RESERVED. © 2005 BY TYS ELECTRONICS CORPORATION.

REV	DATE	DESCRIPTION	BY	APP
00				
B		REVISED FOR ECO-08-027327	DM	WM

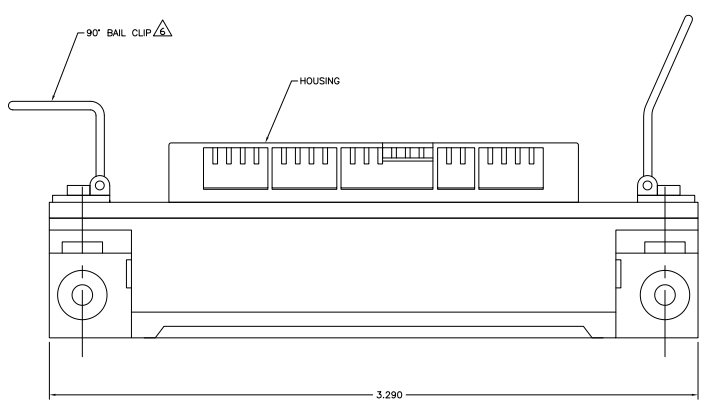


SUGGESTED PRINTED CIRCUIT BOARD MOUNTING DIMENSIONS

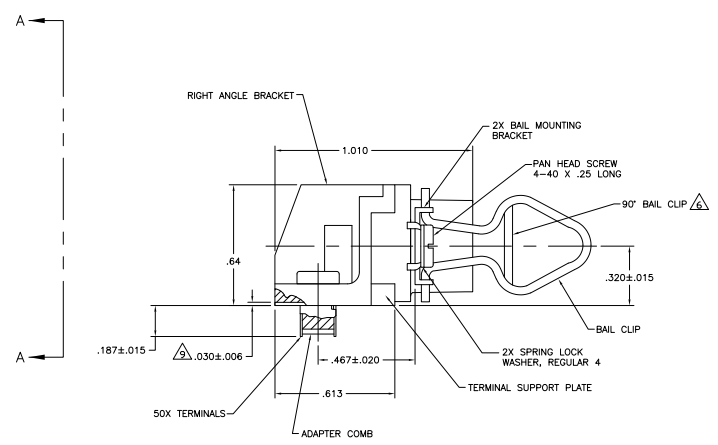


DETAIL A REVERSE ORIENTATION

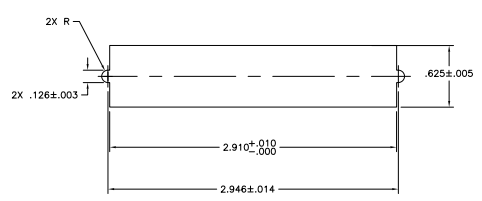
- △ MATERIAL: HOUSING, RIGHT ANGLE BRACKET, ADAPTER COMB & TERMINAL SUPPORT PLATE - THERMOPLASTIC (BLACK).
- △ TERMINALS - HIGH STRENGTH COPPER ALLOY PLATED WITH EITHER .000030 MIN GOLD PLATE OR GOLD FLASH OVER PALLADIUM NICKEL PLATE, .000030 MIN TOTAL ON MATING SURFACE, .000120 MIN TIN PLATE ON TAILS. ALL OVER .000050 MIN NICKEL UNDERPLATE OVER ENTIRE TERMINAL.
- △ BAIL CLIP - PASSIVATED STAINLESS STEEL.
- △ BAIL BRACKET, WASHER & SCREW - ZINC PLATED CARBON STEEL.
- 2. THE CONTACT SURFACES OF THE TERMINALS ARE COATED WITH LUBRICANT.
- 3. CENTER-TO-CENTER SPACING OF TERMINALS IS .085 NOMINAL.
- △ ALL DIMENSIONS SHOWN ARE MAXIMUM UNLESS OTHERWISE SPECIFIED.
- △ DETAIL A IS VIEWED FROM MATING SIDE OF RECEPTACLE ASSEMBLY.
- △ 90° BAIL CLIP LOCATED ON TERMINAL 50 END OF RECEPTACLE ASSEMBLY.
- △ TERMINAL 1 IS LOCATED IN THIS ROW FOR REVERSE ORIENTATION.
- △ FOR USE WITH A NO. 4 TYPE SELF TAPPING SCREW.
- △ TERMINAL SUPPORT PLATE CLEARANCE FOR TERMINAL STRAIN RELIEF & FLUX REMOVAL.



TOP VIEW



SIDE VIEW A-A REAR PANEL MOUNTING DETAIL SHOWN FOR REFERENCE ONLY SCALE 4:1



SUGGESTED REAR PANEL MOUNTING CUTOUT DIMENSIONS

SELF TAPPING MOUNTING	REVERSE ORIENTATION	A	5555492-1
PCB MOUNTING	REVERSE ORIENTATION	DETAIL	PART NUMBER

THIS DRAWING IS A CONTROLLED DOCUMENT.		BY	DATE	REVISION
DESIGNED	BY	DATE	REVISION	
DRAWN	BY	DATE	REVISION	
CHECKED	BY	DATE	REVISION	
APPROVED	BY	DATE	REVISION	

THIS DRAWING IS A CONTROLLED DOCUMENT.	BY	DATE	REVISION
DESIGNED	BY	DATE	REVISION
DRAWN	BY	DATE	REVISION
CHECKED	BY	DATE	REVISION
APPROVED	BY	DATE	REVISION

RECEPTACLE ASSEMBLY W/ BAIL LOCK HARDWARE, 50 POSITION, RIGHT ANGLE, CHAMP-LDK	SIZE	DATE	ISSUE	DRAWING NO.	REVISED TO
	A1	00779	0	5555492	