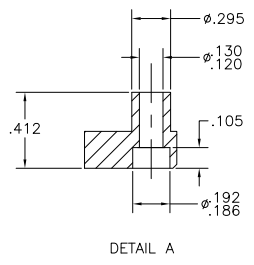
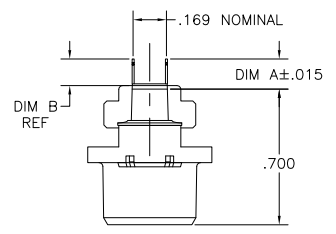


- THE CONTACT SURFACES OF THE TERMINALS ARE COATED WITH LUBRICANT.
- MATERIAL: HOUSING - POLYESTER, BLACK.
TERMINAL - PHOS BRONZE PLATED WITH EITHER .000030 MINIMUM GOLD PLATE OR GOLD FLASH OVER PALLADIUM NICKEL PLATE, .000030 MIN TOTAL ON MATING SURFACE. .000120 MINIMUM TIN-LEAD PLATE ON TAILS OVER .000050 MINIMUM NICKEL UNDERPLATE OVER ENTIRE TERMINAL.
- ALL DIMENSIONS SHOWN ARE MAXIMUM UNLESS OTHERWISE SPECIFIED.



DETAIL A

.180	.200	552118-1
DIM B	DIM A	PART NO

THIS DRAWING IS A CONTROLLED DOCUMENT.		REV	DATE	DESCRIPTION	BY	CHK	APP
UNLESS SPECIFIED	ALL DIMENSIONS	1	18APR06	REVISED FOR ECO-08-007327	DM	WM	
UNLESS SPECIFIED	ALL DIMENSIONS	RECEPTACLE ASSEMBLY, 50 POSN, VERTICAL MTC, CHAMP-LOCK					
UNLESS SPECIFIED	ALL DIMENSIONS	A1	00779	552118	RELECTED TO		
CUSTOMER DRAWING		SCALE: 2:1		SHEET 1 OF 1			