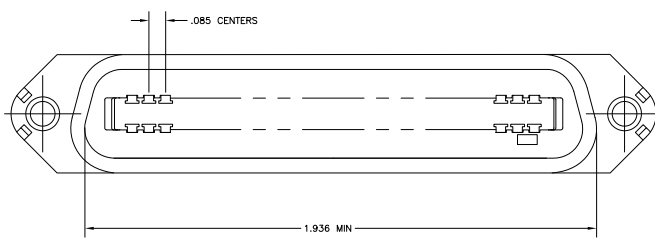
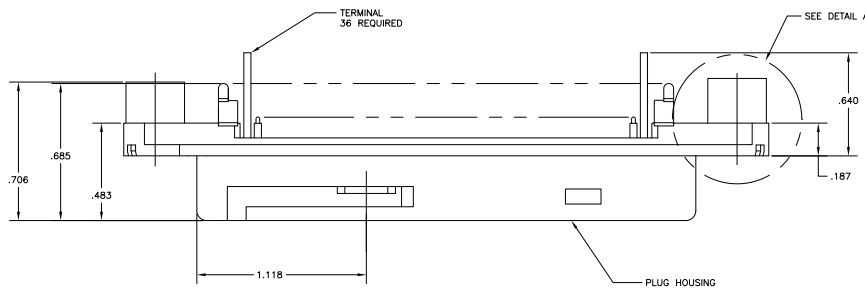
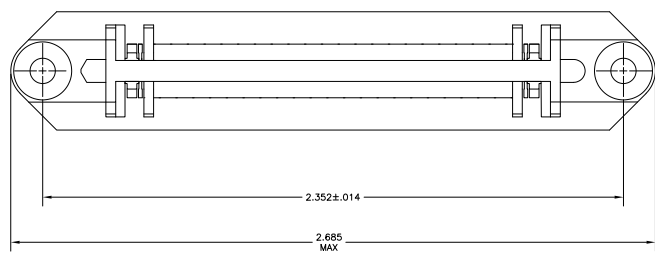
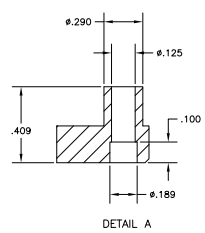
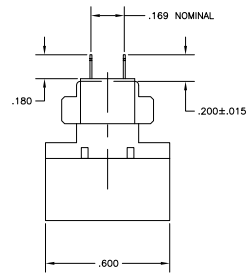


THIS DRAWING IS UNPUBLISHED. REVISIONS FOR VENDOR CONTROL. ALL RIGHTS RESERVED. © 2005 BY TYS ELECTRONICS CORPORATION.

REV	DATE	DESCRIPTION	BY	APP
GP 00				
B		REVISED FOR ECO-08-02737	23/AL/08	BM WM



1. THE CONTACT SURFACES OF THE TERMINALS ARE COATED WITH LUBRICANT.
 △ MATERIAL: HOUSING - THERMOPLASTIC, BLACK. TERMINAL - PHOS BRONZE PLATED WITH EITHER .000030 MINIMUM GOLD PLATE OR GOLD FLASH OVER PALLADIUM NICKEL PLATE. .000030 MINIMUM TOTAL ON MATING SURFACE. .000120 MINIMUM TIN ON TAILS OVER .000050 MINIMUM NICKEL UNDERPLATE OVER ENTIRE TERMINAL.
 △ ALL DIMENSIONS SHOWN ARE FOR REFERENCE ONLY UNLESS OTHERWISE SPECIFIED.



THIS DRAWING IS A CONTROLLED DOCUMENT.		DATE	BY	REVISED	5552232-1	PART NUMBER
DESIGNED	J. LATTUCA	DATE	BY	REVISED	Tys Electronics Corporation Harrisburg, PA 17105-3608	
DRAWN	M. WILMSLEY	DATE	BY	REVISED	PLUG ASSY, 36 POSN, VERT MTO, CHAMP-LOK	
CHECKED	M. WILMSLEY	DATE	BY	REVISED	SEE CUSTOMER SPEC	
APPROVED		DATE	BY	REVISED	A1 00779 ©=5552232	
CUSTOMER DRAWING		DATE	BY	REVISED	4.1 1 1 B	