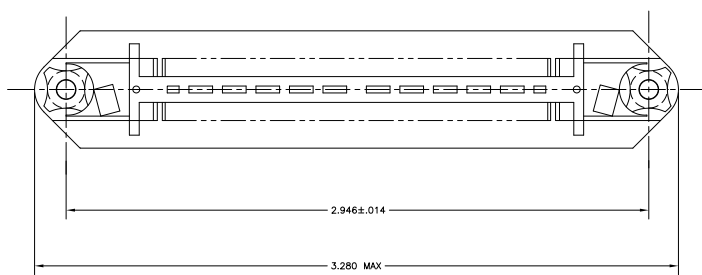
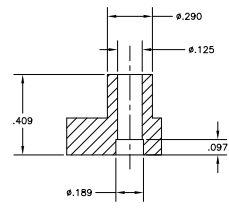
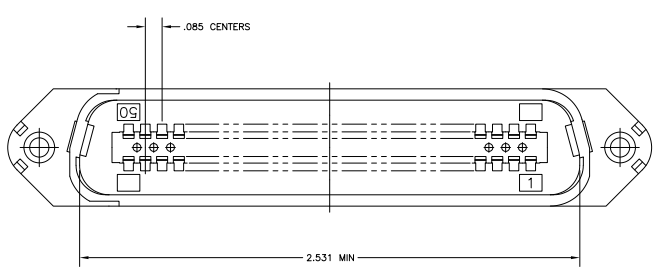
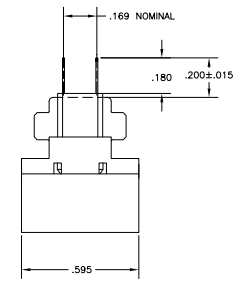
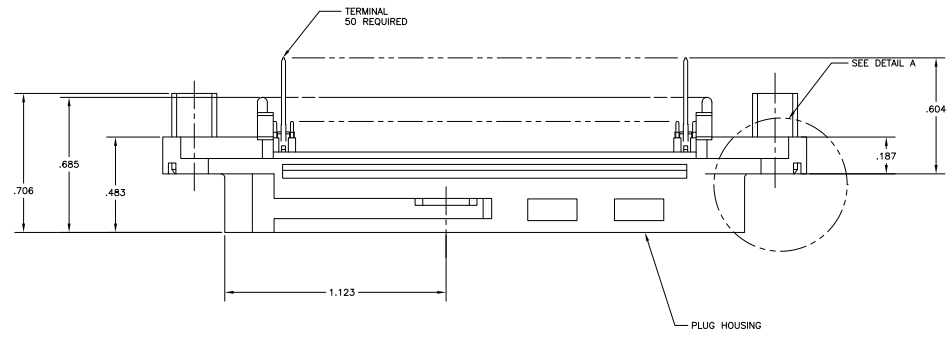


THIS DRAWING IS UNPUBLISHED AND NOT BE LOANED, REPRODUCED, COPIED, OR IN ANY MANNER DISCLOSED TO OTHERS WITHOUT THE WRITTEN PERMISSION OF THE COMPANY. ALL RIGHTS RESERVED.

REV	DATE	DESCRIPTION	BY	CHK	APP
GP 00					
N		REVISED FOR ECO-08-02737		1MPP08	EM WM



- THE CONTACT SURFACES OF THE TERMINALS ARE COATED WITH LUBRICANT.
- MATERIAL: HOUSING - POLYESTER, BLACK.
TERMINAL - PHOS BRONZE PLATED WITH EITHER .000030 MINIMUM GOLD PLATE OR GOLD FLASH OVER PALLADIUM NICKEL PLATE, .000030 MIN TOTAL ON MATING SURFACE. .000120 MINIMUM TIN-LEAD PLATE ON TAILS OVER .000050 MINIMUM NICKEL UNDERPLATE OVER ENTIRE TERMINAL.
- ALL DIMENSIONS SHOWN ARE FOR REFERENCE ONLY, UNLESS OTHERWISE SPECIFIED.



DETAIL A

552116-1
PART
NUMBER

THIS DRAWING IS A CONTROLLED DOCUMENT.		DATE REVISION	REVISIONS	DATE	BY	APP
DATE	DESCRIPTION	BY	DATE	BY	APP	
UNLESS OTHERWISE SPECIFIED:		ALL DIMENSIONS ARE IN INCHES UNLESS OTHERWISE SPECIFIED.				
FINISH	WARRANTY	TESTING	INSPECTION	REWORK	REWORK	REWORK
CUSTOMER DRAWING		DATE	ISSUE	REVISION	NO	REWORK
		A1	00779	0=552116		
		SCALE: 4:1		SHEET	1	OF
					1	N