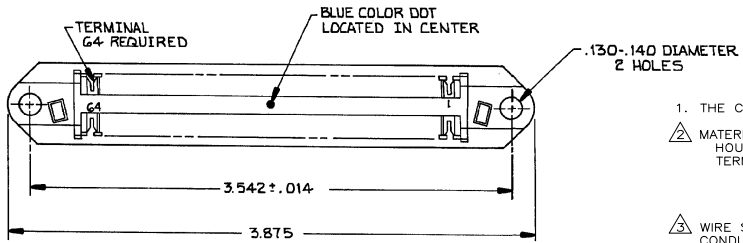
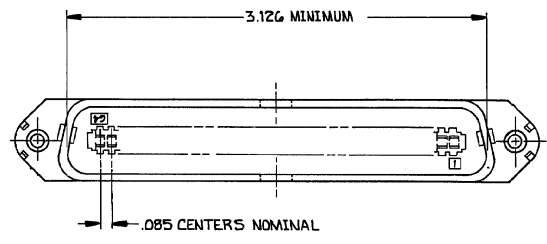
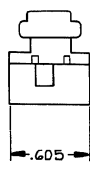
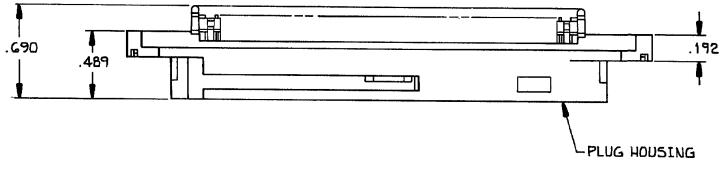


THIS DRAWING IS UNPUBLISHED. RELEASED FOR PUBLICATION  
 © COPYRIGHT BY TYCO ELECTRONICS CORPORATION. ALL RIGHTS RESERVED.

LOC		DST		REVISONS	
P	LR	DESCRIPTION	DATE	BY	APPD
B		REVISED PER ECO-08-007327	27JAN2009	ZMR	WLM



1. THE CONTACT SURFACES OF THE TERMINALS ARE COATED WITH LUBRICANT
- ⚠ MATERIAL:  
 HOUSING - POLYPHENYLENE OXIDE  
 TERMINALS - HIGH STRENGTH COPPER ALLOY PLATED WITH EITHER .000030 MIN GOLD OR GOLD FLASH OVER PALLADIUM NICKEL .000030 MIN TOTAL, ON CONTACT MATING SURFACE. .000050 MIN NICKEL UNDERPLATE OVER ENTIRE TERMINAL.
- ⚠ WIRE SIZE: 24-26 AWG SOLID OR 24 AWG 7 STRANDS OF COPPER CONDUCTORS. MAXIMUM INSULATION DIAMETER OF .045 IS ACCEPTABLE FOR MOST APPLICATIONS.
4. ALL DIMENSIONS SHOWN ARE MAXIMUM UNLESS OTHERWISE SPECIFIED.



BLACK HOUSING COLOR	B	555425-1
SLOT SIZE	A	PART NO

THIS DRAWING IS A CONTROLLED DOCUMENT.		DESIGNED BY: D. MARTIN 10-13-87	Tyco Electronics Corporation Harrisburg, PA 17105-3608	
DRAWN BY: B. FOX 10-14-87		APPROVED BY: J. T. 10-14-87	NAME: PLUG ASSEMBLY, 64 POSITIONS THICK FLANGE, W/ .135 HOLES CHAMP-LOK®	
DIMENSIONS INCHES: 0 P.L.C. # - - 1 P.L.C. # - - 2 P.L.C. # - - 3 P.L.C. # - - 4 P.L.C. # - - MILS # - -		TOLERANCES UNLESS OTHERWISE SPECIFIED:		RESTRICTED TO
MATERIAL: ⚠		FINISH: ⚠	WEIGHT: -	SIZE: A2
CUSTOMER DRAWING		QTY: 00779	DRAWING NO: 555425	SCALE: NTS
		SHEET 1 of 1		REV B

AMP 1471-9 REV 31MAR2000

555425