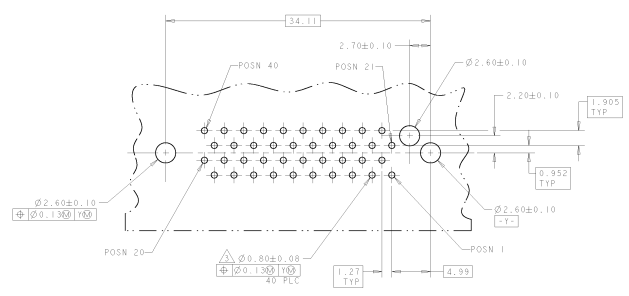
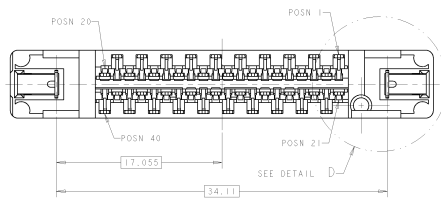
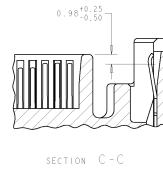
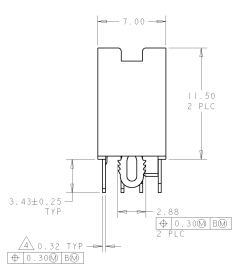
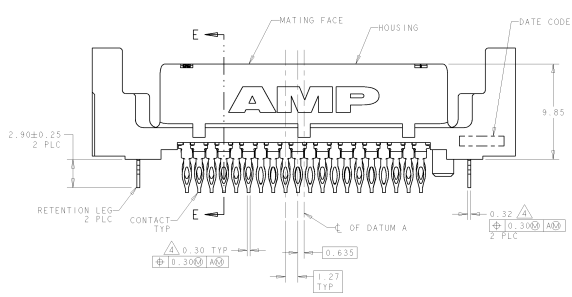
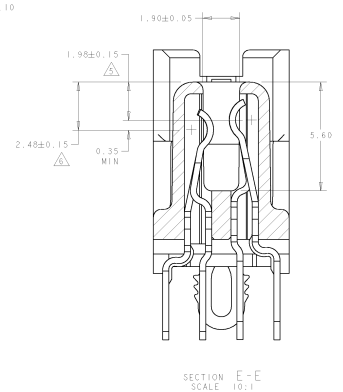
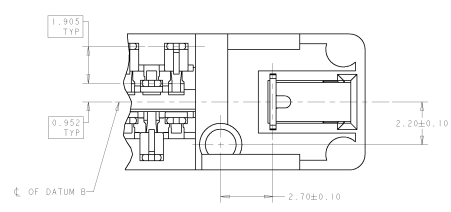
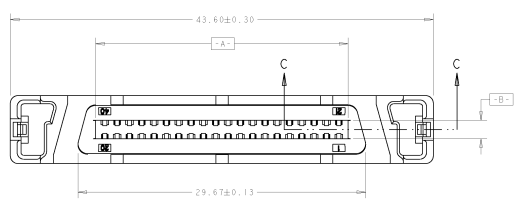


8	7	6	5	4	3	2	1
DATE APPROVED BY: SUPERVISOR		REVISIONS FOR FABRICATION					
BY: CONTROLORE		BY: AMP ENGINEERING		ALL RIGHTS RESERVED			

REV	DATE	REVISIONS	BY	CHK	APP
00					
1		REVISION			
2		REVISED PER DC 9513-0543-04			



- △ HOUSING: LCP, UL 94V-0 RATED, BLACK.
- CONTACTS: PHOSPHOR BRONZE.
- RETENTION LEG: BRASS.
- △ 0.76µm GOLD FOR A LENGTH OF 1.20 MIN STARTING 0.50 MAX FROM MATING END, 1.27µm-3.81µm TIN-LEAD FOR A LENGTH OF 3.43 MIN FROM OPPOSITE END, BOTH OVER 1.27µm MIN NICKEL.
- △ RECOMMENDED DRILLED HOLE SIZE BEFORE PLATING IS Ø0.87 TO Ø0.93.
- △ POSITION TOLERANCE APPLIES AT CONTACT TIP ONLY.
- △ DIMENSION APPLIES TO CONTACT POSITIONS 1, 22, 23, 24, 29, 32, AND 35 THRU 40.
- △ DIMENSION APPLIES TO CONTACT POSITIONS 1 THRU 20, 24, 25, 27, 28, 30, 31, 33, AND 34.
- △ 3.81µm MIN TIN-LEAD OVER 1.27µm MIN NICKEL.
- △ RECOMMENDED PC BOARD THICKNESS IS 2.36 TO 3.81.
- △ 0.76µm GOLD FOR A LENGTH OF 1.20 MIN STARTING 0.50 MAX FROM MATING END, 1.27µm-3.81µm MATTE TIN FOR A LENGTH OF 3.43 MIN FROM OPPOSITE END, BOTH OVER 1.27µm MIN NICKEL.
- △ 3.81µm MIN HALT TIN OVER 1.27µm MIN NICKEL.

RECOMMENDED PC BOARD MOUNTING DIMENSIONS COMPONENT SIDE SCALE 4:1

RETENTION LEG FINISH	CONTACT FINISH	796068-3	796068-1	PART NUMBER
		AMP RECEPTACLE ASSEMBLY, VERTICAL, 40 POSITION, PRESS FIT, CHAMP® BLINDMATE .050 SERIES I		
DATE	SCALE	DRAWN BY	CHECKED BY	APPROVED BY
007719	CS-796068			