

4

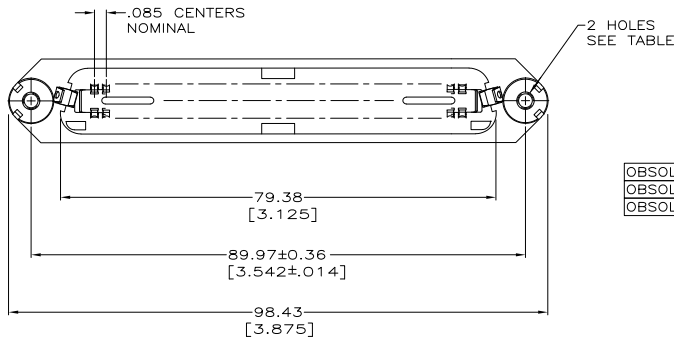
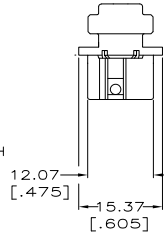
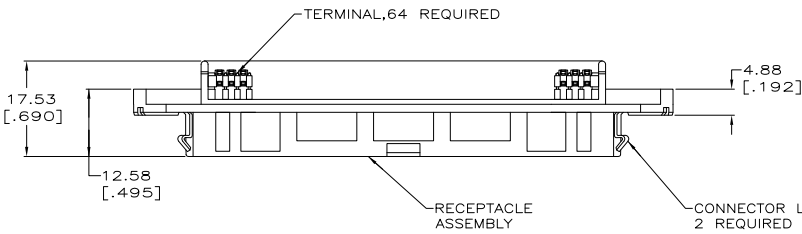
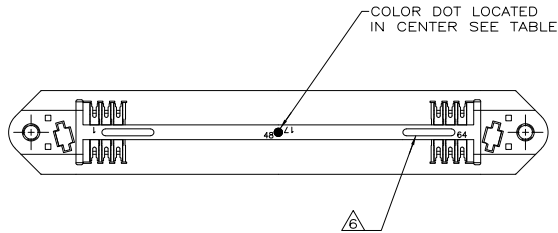
3

2

1

THIS DRAWING IS UNPUBLISHED. RELEASED FOR PUBLICATION.  
 © COPYRIGHT BY TYCO ELECTRONICS CORPORATION. ALL RIGHTS RESERVED.

LOC	DST	REVISIONS					
		F	LN	DESCRIPTION	DATE	BY	APP
GP	00	N		REVISED PER ECO-08-007327	05SEP08	BM	WM



- ⚠ MATERIAL: HOUSING - POLYPHENYLENE OXIDE. TERMINAL - HIGH STRENGTH COPPER ALLOY PLATED WITH 0.76μm [.000030] MIN GOLD OR GOLD FLASH OVER PALLADIUM NICKEL PLATE, 0.76μm [.000030] MIN TOTAL ON MATING SURFACE, OVER 1.27μm [.000050] MIN NICKEL PLATING. LATCH - BRIGHT ZINC PLATED STEEL.
- 2. THE CONTACT SURFACES OF THE TERMINALS ARE COATED WITH LUBRICANT.
- ⚠ ALL DIMENSIONS SHOWN ARE MAXIMUM UNLESS OTHERWISE SPECIFIED.
- ⚠ WIRE SIZE: 24 & 26 AWG SOLID OR 24 AWG 7 STRANDS OF COPPER CONDUCTORS. MAXIMUM INSULATION DIAMETER OF .045 IS ACCEPTABLE FOR MOST APPLICATIONS.
- ⚠ WIRE SIZE: 22 AWG SOLID OR STRANDED COPPER CONDUCTORS. MAXIMUM INSULATION DIA. OF .056 IS ACCEPTABLE FOR MOST APPLICATIONS.
- ⚠ CORING MAY OR MAY NOT APPEAR AND IS AT THE DISCRETION OF AMP INCORPORATED.

OBSOLETE	Ø.182-.192	BLUE	B	BLACK	1-554381-0
OBSOLETE	4-40 UNC-2B	BROWN	F	BLACK	554381-9
OBSOLETE	Ø.130-.140	BLUE	B	BLACK	554381-8

SUPERSEDED BY 554381-2					
4-40 UNC-2B	BLUE	B	BLACK	554381-2	554381-4
SUPERSEDED BY 554381-2					
HOLE SIZE	COLOR DOT	SLOT SIZE	COLOR	PART NUMBER	

THIS DRAWING IS A CONTROLLED DOCUMENT.

DIMENSIONS: mm [INCHES]	TOLERANCES UNLESS OTHERWISE SPECIFIED:	DRN: G. CABRETT	ORDECR: Tyco Electronics Corporation
0 PLG ± .005	1 PLG ± .005	CHK: D. STRAUSSER	Harrisburg, PA 17105-3608
2 PLG ± .005	3 PLG ± .005	APPD: M. HUGHES	RECEPTACLE ASSEMBLY, 64 POSITION, INTEGRAL LOCKING LATCH, THICK FLANGE, CHAMP-LOK®
4 PLG ± .005	ANGLES ± .005	PRODUCT SPEC: -	SIZE: A2
MATERIAL: Δ	FINISH: Δ	APPLICATION SPEC: -	WEIGHT: -
CUSTOMER DRAWING		SIZE: A2	ONE CODE: 00779
		SCALE: 2:1	DRAWING NO: C=554381
		SHEET: 1 of 1	REV: N

AMP 1471-9 REV 31MM0200

554381

A