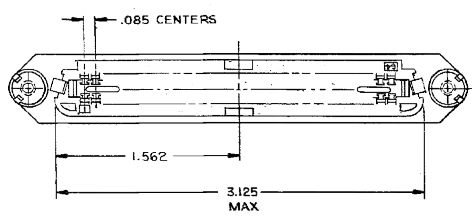
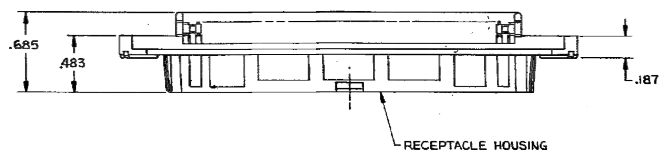
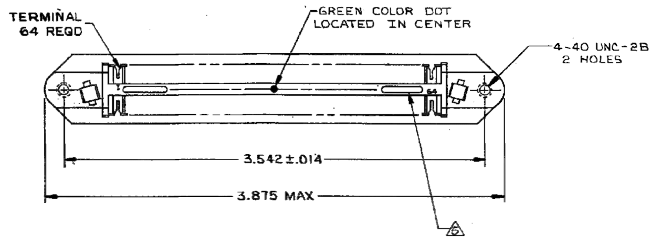


THIS DRAWING IS UNPUBLISHED. RELEASED FOR PUBLICATION
 © COPYRIGHT BY TYCO ELECTRONICS CORPORATION. ALL RIGHTS RESERVED.

LOC	QTY	REVISIONS		DATE	BY	APP'D
GP	00	P	LR			
		H		27JAN2009	ZMR	WLM
				REVISED PER EDO-08-007327		



1. THE CONTACT SURFACES OF THE TERMINALS ARE COATED WITH LUBRICANT.
 2. ALL DIMENSIONS SHOWN ARE FOR REFERENCE ONLY UNLESS OTHERWISE SPECIFIED.
 3. MATERIAL:
 HOUSING - THERMOPLASTIC (BLACK)
 TERMINALS - HIGH STRENGTH COPPER ALLOY PLATED WITH EITHER .000030 MIN GOLD OR GOLD FLASH OVER PALLADIUM NICKEL .000030 MIN TOTAL ON CONTACT MATING SURFACE. .000050 MIN NICKEL UNDERPLATE OVER ENTIRE TERMINAL.
 4. WIRE SIZE: 22 AWG SOLID OR 22 AWG 7 STRANDS OF COPPER CONDUCTORS. MAX INSULATION DIAMETER OF .045 IS ACCEPTABLE FOR MOST APPLICATIONS.
- △ CORING MAY OR MAY NOT APPEAR AND IS AT THE DISCRETION OF TYCO ELECTRONICS.

AS SHOWN	552307-1
DESCRIPTION	PART NO

THIS DRAWING IS A CONTROLLED DOCUMENT.		DESIGNED BY G. BOWMAN 2-11-80	DATE	2-11-80	Tyco Electronics Corporation Harrisburg, PA 17105-3608
DRAWN BY V.E. SLACK 2-12-80		DATE	2-12-80		
CHECKED BY S.G. WARD 2-12-80		DATE	2-12-80	RCPT ASSY, 64 POSITIONS, C SLOT W/ 4-40 TAPPED HOLES, CHAMP-LOK	
APPROVED BY		DATE		SIZE	
MATERIAL		WEIGHT		DRAWING NO	
FINISH				A2 00779 C-552307	
CUSTOMER DRAWING		SCALE	NTS	SHEET	1 of 1

AMP 1471-9 REV 31MAR2000

552307