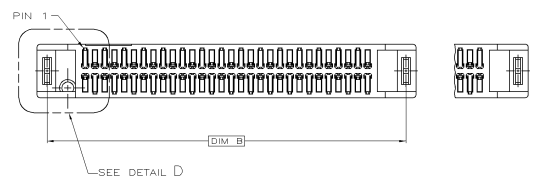
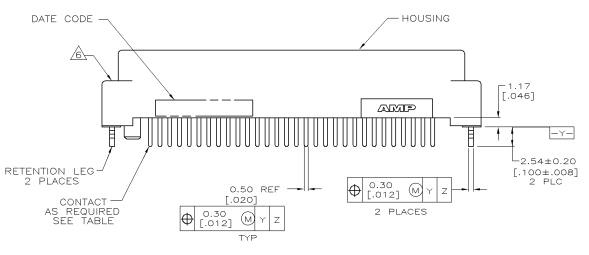
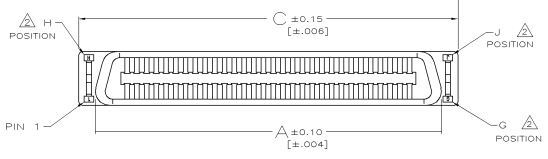
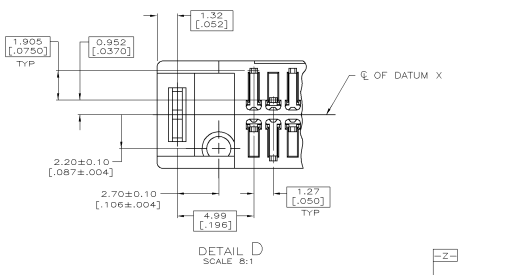


NUMBER C-1734100
METRIC
3RD ANGLE PROJECTION



- △ MATERIALS:
HOUSING- LIQUID CRYSTAL POLYMER (LCP)
MOLDING COMPOUND, 94V-0, BLACK.
CONTACTS- PHOSPHOR BRONZE PLATED WITH
MINIMUM THICK (SEE TABLE) GOLD IN CONTACT
AREA AND 3.81µm [.00150] MINIMUM THICK
MATTE TIN ON SOLDER TINES OVER 1.27µm
[.00050] MINIMUM THICK NICKEL UNDERPLATE.
RETENTION LEG- BRASS PLATED WITH 3.81µm
[.00150] MINIMUM TIN-Cu OVER 1.27µm
[.00050] MINIMUM NICKEL UNDERPLATE.
- △ G, J AND H INDICATE NUMBER OF POSITION
MARKED ON ASSEMBLY, ALSO SEE TABLE.
- △ ALL DIMENSIONS SHOWN ARE MAXIMUM UNLESS
OTHERWISE SPECIFIED.
- 4. 60 POSITION AS SHOWN.
- △ RETENTION LEGS NOT PRESENT.
- △ TOP OF RETENTION LEG MAY NOT PROTRUDE ABOVE THIS SURFACE.
- △ HOUSING BOW UP TO 0.30 [.012] ALLOWED.
- 8. ALWAYS RH6S/ELV COMPLIANT.
- 9. WAVE SOLDER CAPABLE TO 265°C PER TYCO SPEC 109-202, CONDITION B.

PCB THICKNESS	E	C	B	A	G	J	H	GOLD	POSITION	PART NUMBER
2.08 [.082]	3.17 [1.25]	43.10 [1.697]	40.46 [1.593]	38.82 [1.528]	25	50	26	0.00076 [.000030]	50	1-1734100-9
0.80-1.60 [.031-.063]	2.54 [1.00]	125.65 [4.947]	123.01 [4.843]	121.37 [4.778]	90	180	91	0.00076 [.000030]	180	1-1734100-8
0.80-1.60 [.031-.063]	2.54 [1.00]	112.95 [4.447]	110.31 [4.343]	108.67 [4.278]	80	160	81	0.00076 [.000030]	160	1-1734100-6
0.80-1.60 [.031-.063]	2.54 [1.00]	93.90 [3.697]	91.26 [3.593]	89.62 [3.528]	65	130	66	0.00076 [.000030]	130	1-1734100-3
0.80-1.60 [.031-.063]	2.54 [1.00]	87.55 [3.447]	84.91 [3.343]	83.27 [3.278]	60	120	61	0.00076 [.000030]	120	1-1734100-2
0.80-1.60 [.031-.063]	2.54 [1.00]	74.85 [2.947]	72.21 [2.843]	70.57 [2.778]	50	100	51	0.00076 [.000030]	100	1-1734100-1
0.80-1.60 [.031-.063]	2.54 [1.00]	74.85 [2.947]	72.21 [2.843]	70.57 [2.778]	50	100	51	0.00076 [.000030]	100	1-1734100-0
0.80-1.60 [.031-.063]	2.54 [1.00]	62.15 [2.447]	59.51 [2.343]	57.87 [2.278]	40	80	41	0.00076 [.000030]	80	1734100-9
0.80-1.60 [.031-.063]	2.54 [1.00]	62.15 [2.447]	59.51 [2.343]	57.87 [2.278]	40	80	41	0.00076 [.000030]	80	1734100-8
0.80-1.60 [.031-.063]	2.54 [1.00]	54.53 [2.147]	51.89 [2.043]	50.25 [1.978]	34	68	35	0.00076 [.000030]	68	1734100-7
0.80-1.60 [.031-.063]	2.54 [1.00]	45.45 [1.847]	42.81 [1.843]	41.17 [1.778]	30	60	31	0.00076 [.000030]	60	1734100-6
0.80-1.60 [.031-.063]	2.54 [1.00]	43.10 [1.697]	40.46 [1.593]	38.82 [1.528]	25	50	26	0.00076 [.000030]	50	1734100-5
0.80-1.60 [.031-.063]	2.54 [1.00]	36.75 [1.447]	34.11 [1.343]	32.47 [1.278]	20	40	21	0.00076 [.000030]	40	1734100-4
0.80-1.60 [.031-.063]	2.54 [1.00]	30.40 [1.197]	27.76 [1.093]	26.12 [1.028]	15	30	16	0.00076 [.000030]	30	1734100-3
2.08 [.082]	3.17 [1.25]	24.05 [.947]	21.41 [.843]	19.77 [.778]	10	20	11	0.00076 [.000030]	20	1734100-2

DIMENSION : 0. H.U.
0 PL ±
1 PL ±
2 PL ±
3 PL ±
ANGLES : ±°

MATERIAL : △

FINISH : △

DWN O. HU
21-DEC-2006
CHK S. HOU
21-DEC-2006
NAME
APVD W.J. KE
21-DEC-2006
PRODUCT SPEC
108-1367
APPLICATION SPEC
114-6045
WEIGHT

TYCO Electronics
TYCO HOLDINGS (BERMUDA)
VII LTD. TAIWAN BRANCH

PLUG ASSEMBLY, VERTICAL
13.2 mm, BOARD-TO-BOARD,
CHAMP .050, SERIES I

LOC DW A3
SCALE --
SIZE A3
DRAWING NO C-1734100
REV B
SHEET 1 OF 2

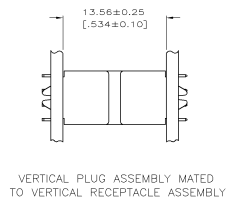
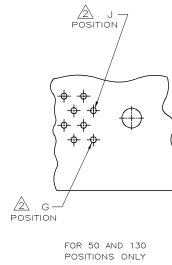
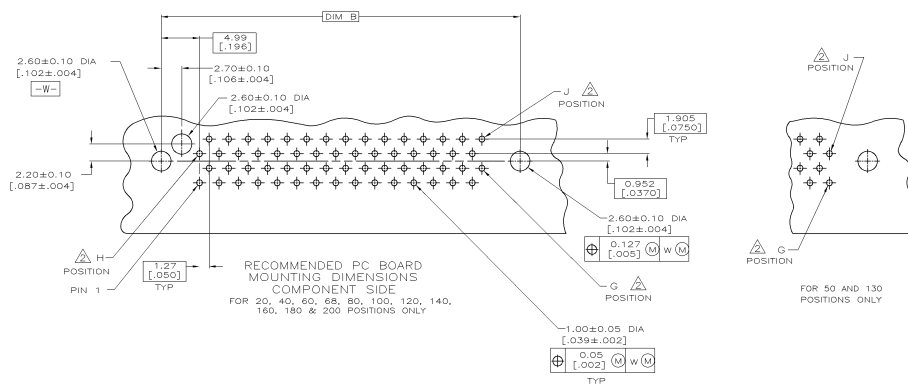
B	ADD 1-1734100-9	ECR-06-029917	OH SH	22DEC 2006
A	CHANGE PLATING SPEC	ECR-06-024892	OH SH	27OCT 2006
O	FIRST RELEASED	FZ00-0026-04	OH SH	26MAR 2004
LTR	REVISION RECORD	ECN	DWN CHK	DATE

THIS INFORMATION IS CONFIDENTIAL AND IS RELEASED TO YOU ON CONDITION THAT NO FURTHER DISCLOSURE IS MADE BY YOU TO OTHER THAN AMP PERSONNEL WITHOUT DIMENSIONS IN MILLIMETERS. DO NOT SCALE PRINT.

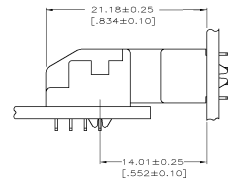
NUMBER
C-1734100

3RD ANGLE PROJECTION

METRIC



VERTICAL PLUG ASSEMBLY MATED TO VERTICAL RECEPTACLE ASSEMBLY



VERTICAL PLUG ASSEMBLY MATED TO RIGHT ANGLE RECEPTACLE ASSEMBLY

THIS INFORMATION IS CONFIDENTIAL AND IS DECLASSIFIED TO YOU ON CONDITION THAT NO FURTHER DISCLOSURE IS MADE BY YOU TO OTHER THAN AMP PERSONNEL WITHOUT DIMENSIONS IN MILLIMETERS. DO NOT SCALE PRINT.

PRINT DIST
DW

SEE SHEET 1.	ECN	DWN	CHK	DATE
LTR	REVISION RECORD			

DIMENSION : 0 PLC ± 1 PLC ± 2 PLC ± 3 PLC ± ANGLES : ±°	DWN	O. HU 21-DEC-2006		TYCO HOLDINGS (BERMUDA) VII LTD. TAIWAN BRANCH	
	CHK	S. HOU 21-DEC-2006		NAME	
MATERIAL	APVD	W.J. KE 21-DEC-2006	PLUG ASSEMBLY, VERTICAL 13.2 mm, BOARD-TO-BOARD, CHAMP .050, SERIES I		
SEE NOTE	PRODUCT SPEC		LOC	SIZE	DRAWING NO
FINISH	APPLICATION SPEC		DW	A ₃	C-1734100
SEE NOTE	WEIGHT		SCALE		SHEET
			--		2 OF 2

CUSTOMER DRAWING