

4

3

2

1

THIS DRAWING IS UNPUBLISHED. RELEASED FOR PUBLICATION.  
 © COPYRIGHT BY TYCO ELECTRONICS CORPORATION. ALL RIGHTS RESERVED.

LOC	DIST	REVISIONS			
F	LNK	DESCRIPTION	DATE	BY	APP
GP	00				
	E	REVISED PER ECO-08-007327	05SEP08	BM	WM

RECEPTACLE TERMINAL  
 QUANTITY 50

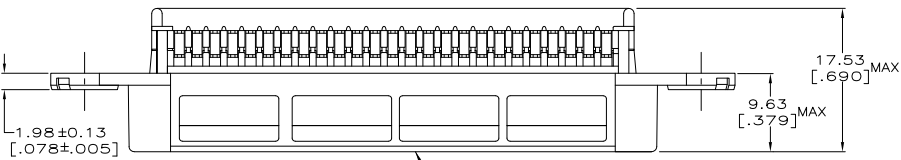
BLUE COLOR DOT  
 LOCATED IN CENTER

$03.18 \pm 0.13$   
 [.125 ± .005]  
 2 HOLES

$74.83 \pm 0.36$   
 [2.946 ± 0.14]

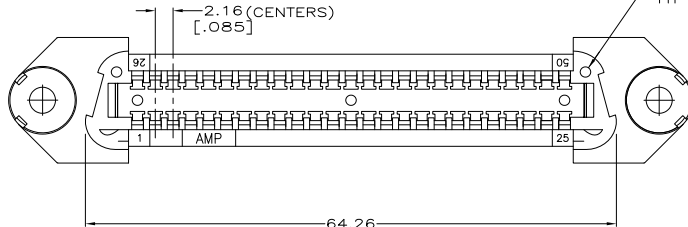
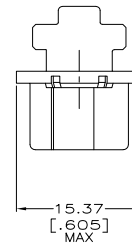
83.31  
 [3.280]

- ⚠ MATERIAL: HOUSING - POLYPHENYLENE OXIDE, BLACK.  
 TERMINAL - HIGH STRENGTH COPPER ALLOY PLATED  
 WITH  $0.76\mu\text{m}$  [.000030] MIN GOLD OR GOLD FLASH  
 OVER PALLADIUM NICKEL PLATE,  $0.76\mu\text{m}$  [.000030]  
 MIN TOTAL ON MATING SURFACE,  $1.27\mu\text{m}$  [.000050]  
 MIN NICKEL UNDERPLATE ON ENTIRE CONTACT.
- THE CONTACT SURFACES OF THE TERMINALS ARE COATED WITH LUBRICANT.
  - WIRE SIZE: 26 AWG SOLID OR 24 AWG 7 STRANDS OF COPPER CONDUCTORS. MAXIMUM INSULATION DIAMETER OF 1.14[.045] IS ACCEPTABLE FOR MOST APPLICATIONS.



RECEPTACLE HOUSING

OPTIONAL CORE FEATURE  
 TYP



554342-1  
 PART NUMBER

DIMENSIONS:		TOLERANCES UNLESS OTHERWISE SPECIFIED:		APPROVED		TYCO ELECTRONICS CORPORATION	
mm	[INCHES]	0 PL	1 PL	DATE	NAME	Harrisburg, PA 17105-3608	
		0 PL	±	22AUG2002	REP. MCCRAW	EMI RECEPTACLE ASSEMBLY, 50 POSITION, SCREW LOCK, B-SLOT, WITH 3.175[.125] DIAMETER HOLES, CHAMP	
		1 PL	±	22AUG2002		RESTRICTED TO	
		2 PL	±			-	
		3 PL	±			-	
		4 PL	±			-	
		ANGLES	±			-	
		FINISH	±			-	
MATERIAL				WEIGHT		SIZE	
△				-		A2 00779 C=554342	
FINISH				CUSTOMER DRAWING		SCALE 3:1 SHEET 1 of 1 REV E	

AMP 1471-9 REV 31MMR2000

554342

A