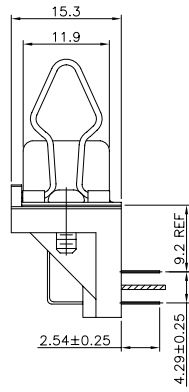
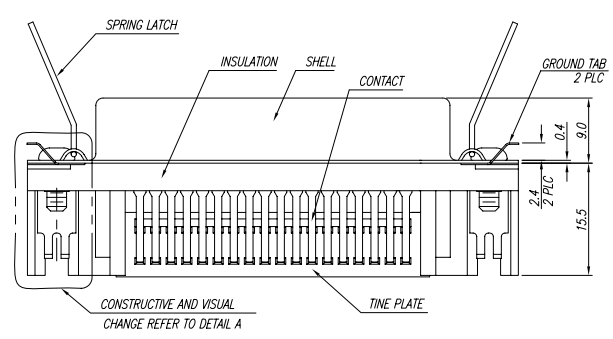
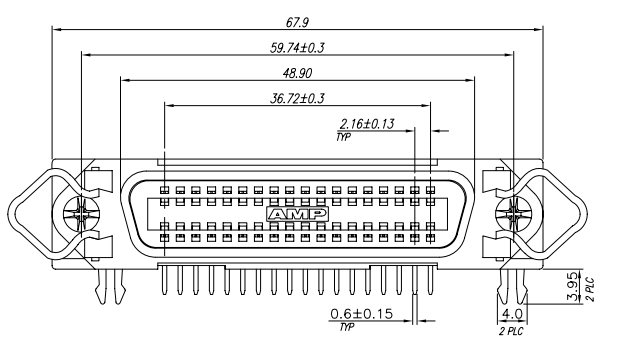


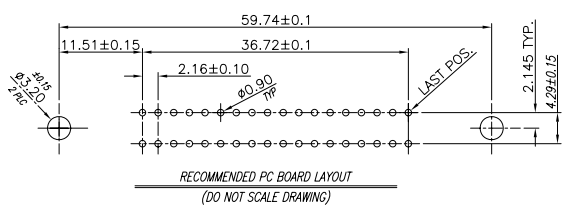
THIS DRAWING IS UNPUBLISHED. RELEASED FOR PUBLICATION AUG. 2006.
 © COPYRIGHT BY TYCO ELECTRONICS CORPORATION. ALL RIGHTS RESERVED.

| LOC | DIST | REVISIONS | | | |
|-----|------|-------------------------|---------|-----|------|
| P | LTR | DESCRIPTION | DATE | DWN | APVD |
| B | | REVISED (ECR-08-025956) | 27OCT08 | SC | WK |



NOTE:
 1. MATERIALS:
 HOUSING: THERMOPLASTIC WITH GLASS FIBER FILLED, UL94V-0 RATED, COLOR: (SEE TABLE)
 CONTACTS: BRASS, THICKNESS= 0.3mm.
 BOARD LOCK: BRASS, THICKNESS= 0.6mm.
 SPRING LATCH: STAINLESS STEEL.
 SHELL: STEEL, THICKNESS= 0.6mm.
 SCREW: STEEL.
 QUARTRANGLE RIVET: BRASS.
 2. FINISH:
 CONTACT: GOLD PLAED (SEE TABLE) ON CONTACT AREA, 100u" MIN TIN-Cu ON SOLDER TAIL, 50u" MIN. NICKEL UNDERPLATED ALL OVER.
 SHELL AND SCREW: 50u" MIN. NICKEL PLATED.
 BOARD LOCK: 150u" MIN. TIN-Cu PLATED.
 QUARTRANGLE RIVET: 50u" MIN. NICKEL PLATED.
 ⚠ HOUSING: HIGH TEMPERATURE THERMOPLASTIC, UL94V-0 RATED, COLOR: (SEE TABLE)

| | W/O | BLACK | ⚠ BLACK | GOLD FLASH | 4-1734044-3 |
|----------|-------------|------------|------------|-------------|-------------|
| OBSOLETE | W/ | ⚠ BLACK | RIVET (M3) | 15u" | 3-1734044-3 |
| OBSOLETE | W/O | BURGUNDY | SCREW | 15u" | 2-1734044-1 |
| OBSOLETE | W/O | ⚠ BLACK | RIVET (M3) | 15u" | 1-1734044-3 |
| | W/O | BLACK | RIVET | 15u" | 1-1734044-2 |
| | W/O | BLACK | SCREW | 15u" | 1-1734044-1 |
| | W/O | BLACK | RIVET (M3) | GOLD FLASH | ⚠ 1734044-3 |
| | W/O | BLACK | RIVET | GOLD FLASH | 1734044-2 |
| | W/O | BLACK | SCREW | GOLD FLASH | 1734044-1 |
| | GROUND TABS | HSG. COLOR | LOCK TYPE | GOLD PLATED | PART NUMBER |



THIS DRAWING IS A CONTROLLED DOCUMENT.

| | | | |
|---------------------------|-----------|-----------|--|
| DWN | S. CHIEN | 27OCT2008 | Tyco Electronics Corporation Taipei, Taiwan |
| CHK | S. CHIEN | 27OCT2008 | |
| APVD | W. KODAMA | 27OCT2008 | NAME |
| PRODUCT SPEC | 108-57098 | | RCPT. ASS'Y, 36P RIGHT ANGLE, CENTRONICS. |
| QUALIFICATION TEST REPORT | 501-57055 | | RESTRICTED TO |
| MATERIAL | FINISH | WEIGHT | SIZE |
| SEE NOTE | SEE NOTE | - GRAMS | A3 00779 C=1734044 |
| CUSTOMER DRAWING | | SCALE | SHEET 1 of 3 REV B |

4

3

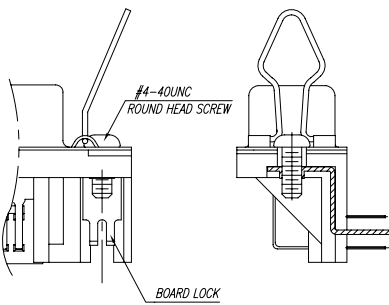
2

1

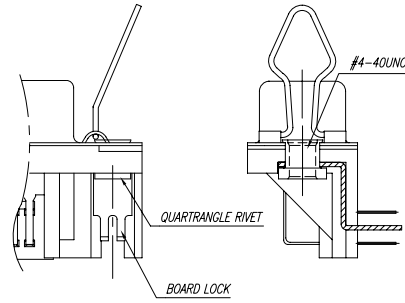
THIS DRAWING IS UNPUBLISHED. RELEASED FOR PUBLICATION AUG. 2006.
 © COPYRIGHT BY TYCO ELECTRONICS CORPORATION. ALL RIGHTS RESERVED.

| LOC | DIST | REVISIONS | | | | | |
|-----|------|-----------|-----|--------------|------|-----|------|
| DW | | P | LTR | DESCRIPTION | DATE | DWN | APVD |
| | | | | SEE SHEET 1. | | | |

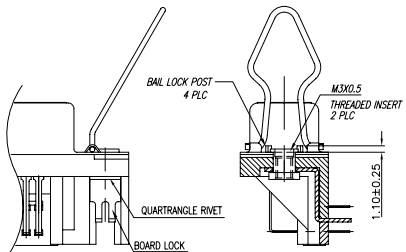
DETAIL A :



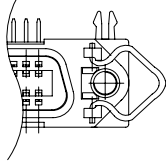
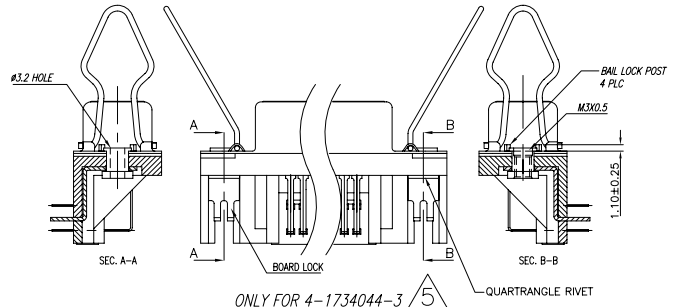
X-1734044-1



X-1734044-2



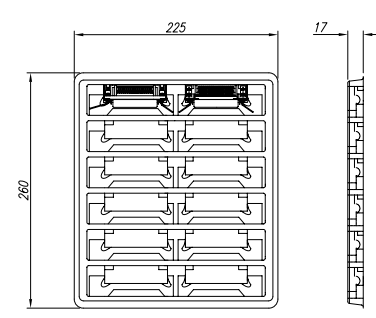
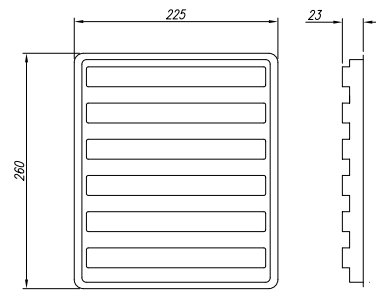
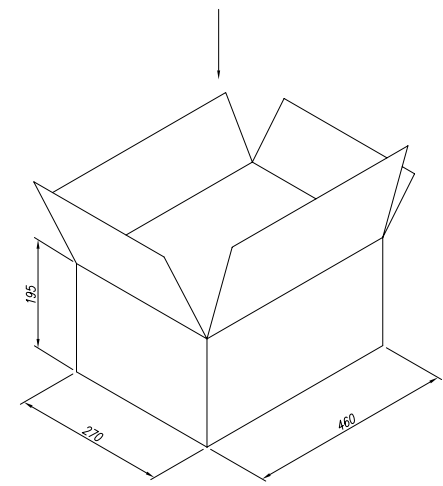
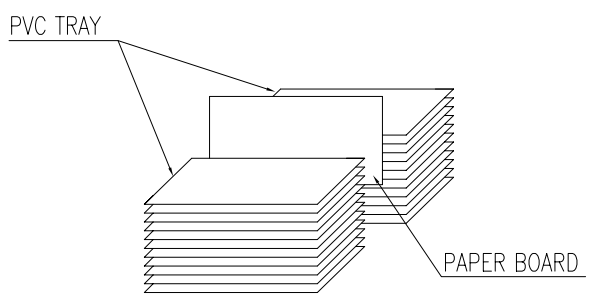
ONLY FOR 0-1734044-3



| | | | | |
|--|--|------|--|--|
| THIS DRAWING IS A CONTROLLED DOCUMENT. | | DWN | Tyco Electronics Corporation Taipei, Taiwan | |
| DIMENSIONS: MM | | CHK | NAME | |
| TOLERANCES UNLESS OTHERWISE SPECIFIED: | | APVD | PRODUCT SPEC | |
| 0 PLC ±.05 | | | APPLICATION SPEC | |
| 1 PLC ±.02 | | | WEIGHT | |
| 2 PLC ±.01 | | | SIZE CAGE CODE DRAWING NO | |
| 3 PLC ±.005 | | | A3 00779 C=1734044 | |
| 4 PLC ±.002 | | | RESTRICTED TO | |
| ANGLES ±.05 | | | CUSTOMER DRAWING | |
| FINISH | | | SCALE SHEET 2 of 3 REV B | |

THIS DRAWING IS UNPUBLISHED. RELEASED FOR PUBLICATION AUG. 2006.
 © COPYRIGHT - BY TYCO ELECTRONICS CORPORATION. ALL RIGHTS RESERVED.

| LOC | DIST | REVISIONS | | | |
|-----|------|--------------|------|-----|------|
| P | LTR | DESCRIPTION | DATE | DWN | APVD |
| | | SEE SHEET 1. | | | |



| PCS/TRAY | PACKING QUANTITY/OUTER BOX | N.W.(KGS) | G.W.(KGS) |
|----------|----------------------------|-----------|-----------|
| 12 | 192 | 8 | 9 |

| | | | | |
|---|--|------------------|--|---------------|
| THIS DRAWING IS A CONTROLLED DOCUMENT. | | DWN | Tyco Electronics Corporation Taipei, Taiwan | |
| DIMENSIONS: MM | | CHK | NAME | |
| 0 PLC ± 1 PLC ± 2 PLC ± 3 PLC ± 4 PLC ± R/C ANGLES ± | | APVD | RCPT. ASS'Y, 36P RIGHT ANGLE, CENTRONICS. | |
| MATERIAL | | PRODUCT SPEC | SIZE | RESTRICTED TO |
| FINISH | | APPLICATION SPEC | A3 | |
| | | WEIGHT | CAGE CODE | DRAWING NO |
| | | CUSTOMER DRAWING | 00779 | C=1734044 |
| | | SCALE | SHEET | REV |
| | | | 3 of 3 | B |