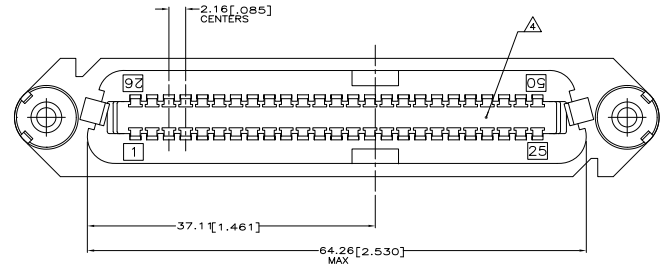
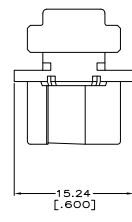
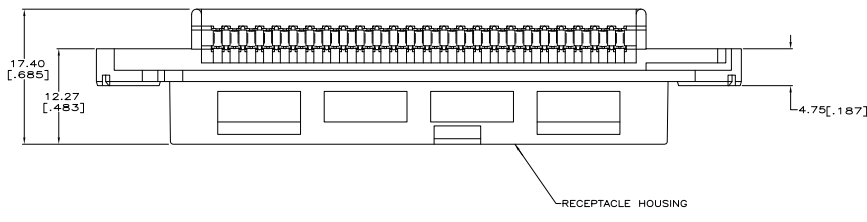
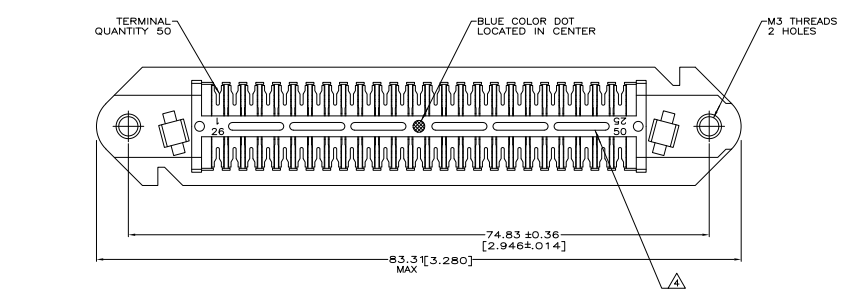


THIS DRAWING IS UNPUBLISHED
 RECEIVED FOR INFORMATION
 © 2007 BY Tyco Electronics Corporation. ALL RIGHTS RESERVED.

REV. NO.		DESCRIPTION	DATE	BY	APP'D
GP	00				
C		REVISED FOR ECO-08-007327	05SEP08	BM	WM



1. THE CONTACT SURFACES OF THE TERMINALS ARE COATED WITH LUBRICANT.
2. DIMENSIONS ARE MAXIMUM UNLESS OTHERWISE SPECIFIED.
3. MATERIAL: HOUSING - POLYPHENYLENE OXIDE, BLACK. TERMINAL - HIGH STRENGTH COPPER ALLOY PLATED WITH 0.76µm [.000030] MIN GOLD OR GOLD FLASH OVER PALLADIUM NICKEL PLATE, 0.76µm [.000030] MIN TOTAL ON MATING SURFACE, OVER 1.27µm [.000050µ] MIN NICKEL PLATING.
4. CORING MAY OR MAY NOT APPEAR AND IS AT THE DISCRETION OF AMP INCORPORATED.
5. WIRE SIZE: 24 & 26 AWG SOLID & 24 AWG 7 STRAND COPPER CONDUCTORS, MAXIMUM INSULATION DIAMETER OF 1.15[.045] IS ACCEPTABLE FOR MOST APPLICATIONS.

THIS DRAWING IS A CONTROLLED DOCUMENT.		1116550-1 PART NUMBER	
Tyco Electronics Corporation Harrisburg, PA 17105-3608		RECEPTACLE ASSEMBLY, 50 POSITION, B-SLOT, WITH M3 THREADS	
DESIGNER: J. FLETCHER	DATE: 08/07/08	SIZE: A1	REV: 00779
CUSTOMER DRAWING	SCALE: 2:1	SHEET: 1	TOTAL: 1