

4

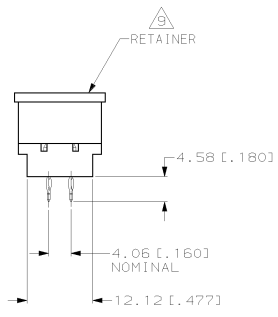
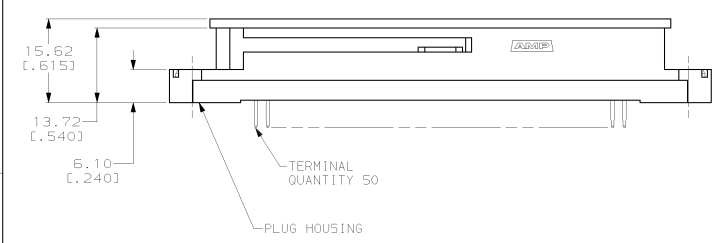
3

2

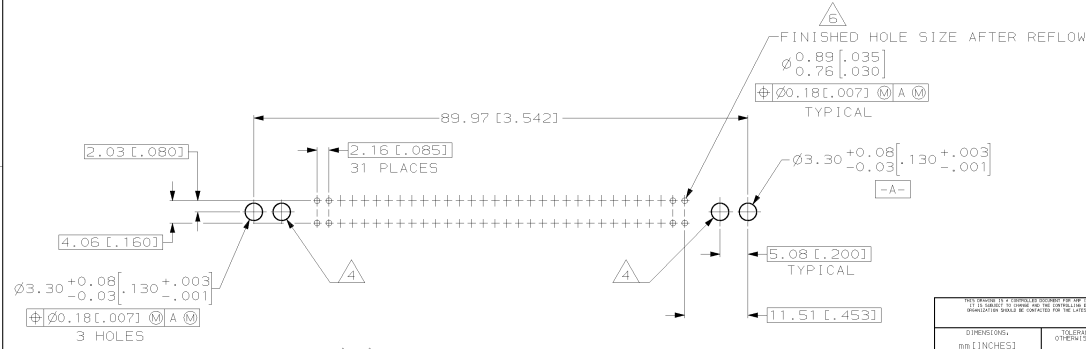
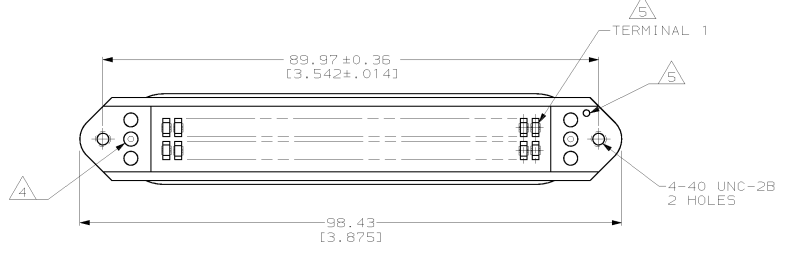
1

THIS DRAWING IS UNPUBLISHED. RELEASED FOR PUBLICATION. BY AMP INCORPORATED. ALL RIGHTS RESERVED.

LOC	QTY	REVISIONS	DATE	BY	APP'D
AA	20				
F	LTR	DESCRIPTION			
F		REVISED; EC OUF0-0130-01	28SEP01	DL	EJB



- DIMENSIONS ARE MAXIMUM UNLESS OTHERWISE SPECIFIED.
- MATERIAL: HOUSING - POLYESTER MOLDING COMPOUND BLACK. TERMINAL - COPPER ALLOY PLATED WITH 0.75µm [.000030] MINIMUM THICK GOLD ON MATING SURFACE AND 0.13µm [.000005] MINIMUM THICK GOLD ON ACTION PIN AREA OVER 1.27µm [.000050] MINIMUM THICK NICKEL UNDERPLATE OVER ENTIRE TERMINAL. RETAINER - POLYETHYLENE, NATURAL.
- THE CONTACT SURFACES OF THE TERMINALS ARE COATED WITH LUBRICANT.
- OPTIONAL MOUNTING HOLE FOR SELF-TAPPING SCREW.
- THRU HOLE ON HOUSING FLANGE INDICATES POSITION 1 LOCATION.
- ALL PLATED-THRU HOLES SHALL BE PER AMP SPEC 115-6072.
- 284N(64 LBS) MINIMUM FORCE REQUIRED TO UNSEAT CONNECTOR FROM PRINTED CIRCUIT BOARD WITHOUT USE OF HARDWARE.
- CENTER-TO-CENTER SPACING OF TERMINALS IS .085 NOMINAL.
- RETAINER MUST REMAIN INSTALLED UNTIL AFTER CONNECTOR HAS BEEN INSERTED INTO PCB HOLES.



PRINTED CIRCUIT BOARD MOUNTING DIMENSIONS

DIMENSIONS mm [INCHES]		DIMENSIONS COATED DIMENSIONS UNCOATED		DATE: 31 MAY 99 BY: A. HOLT CHK: S. FOX APP'D: S. FOX PRODUCT SPEC: - APPLICATION SPEC: - RETENT: - CUSTOMER DRAWING: -		AMP AMP Incorporated Harrisburg, PA 17105-3608	
MATERIAL: Δ		FINISH: Δ		NAME: PLUG ASSEMBLY, 64 POSITION, SELF-RETAINED, ACTION PIN, CHAMP-LOK		SIZE: A2 CASE CODE: 00779 DRAWING NO: C-554759	
SCALE: 2:1		SHEET: 1 OF 1		REV: F		PART NUMBER: 554759-1	

AMP 1471-9 REV 03/94/94
13-08-95 amp36051 /note/amp36051/revmod

554759