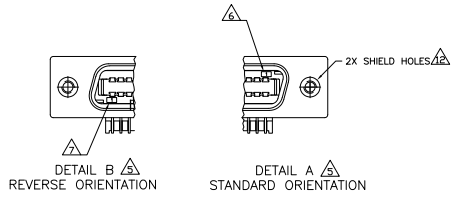
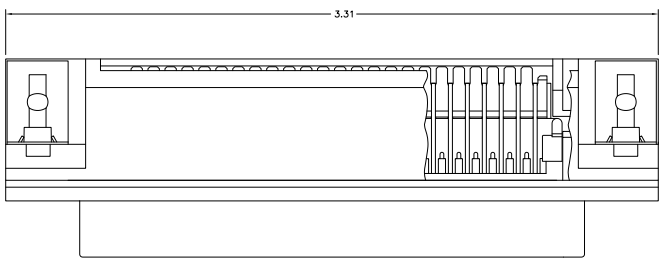


SUGGESTED PRINTED CIRCUIT BOARD MOUNTING DIMENSIONS

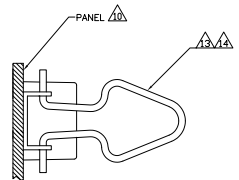


DETAIL B  
REVERSE ORIENTATION

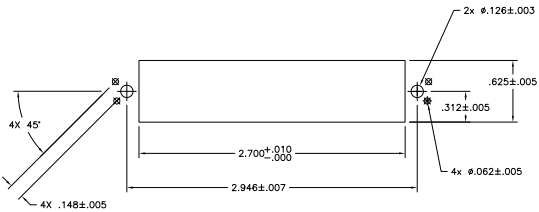
DETAIL A  
STANDARD ORIENTATION



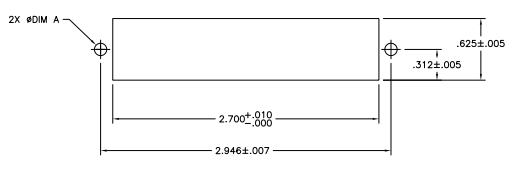
DETAIL C  
REAR PANEL MOUNTING DETAIL  
SHOWN FOR REFERENCE ONLY  
SCALE 4:1



DETAIL D  
SAME AS DETAIL C EXCEPT FOR  
BAIL LOCK FEATURE (SCS)  
SCALE 4:1

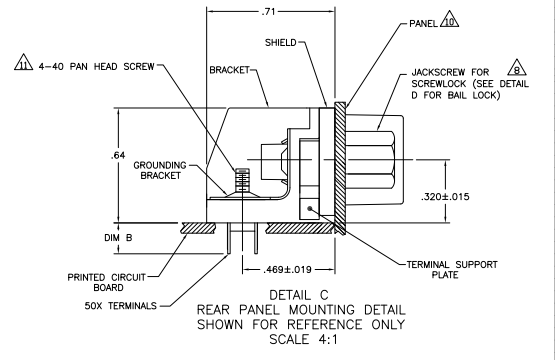


SUGGESTED PANEL CUTOUT FOR  
BAIL LOCK FEATURE (SCS)



SUGGESTED PANEL CUTOUT FOR  
SCREW LOCK FEATURE

- 1. MATERIAL:  
HOUSING, BRACKET, ADAPTER COMB AND TERMINAL SUPPORT PLATE - POLYESTER.  
MOLDING COMPOUND - UL94V-0 RATING, BLACK.  
SHIELD - BRIGHT NICKEL OVER COPPER, PLATED DIE CASTING.  
TERMINALS - HIGH STRENGTH COPPER ALLOY PLATED WITH EITHER .00030 MIN GOLD PLATE OR GOLD FLASH OVER PALLADIUM NICKEL PLATE, .00030 MIN TOTAL ON MATING SURFACE, .000120 MIN TIN-LEAD PLATE ON TAILS. ALL OVER .00050 MIN NICKEL UNDERPLATE OVER ENTIRE TERMINAL.  
GROUNDING BRACKET - ZINC PLATED STEEL.
- 2. THE CONTACT SURFACES OF THE TERMINALS ARE COATED WITH LUBRICANT.
- 3. CENTER-TO-CENTER SPACING OF TERMINALS IS .085 NOMINAL.
- 4. ALL DIMENSIONS SHOWN ARE MAXIMUM UNLESS OTHERWISE SPECIFIED.
- 5. DETAILS A & B ARE VIEWED FROM MATING SIDE OF RECEPTACLE ASSEMBLY.
- 6. TERMINAL 1 IS LOCATED IN THIS ROW FOR STANDARD ORIENTATION.
- 7. TERMINAL 1 IS LOCATED IN THIS ROW FOR REVERSE ORIENTATION.
- 8. SCREWS SHOWN FOR REFERENCE ONLY, RECOMMENDED HARDWARE KIT 554272-1 FOR USE WITH PART NUMBER 553813-3 & 4. WHEN SCREW LOCK FEATURE IS REQUIRED.
- 9. SHIELD IS ASSEMBLED TO CONNECTOR BEFORE SHIPMENT.
- 10. PANEL THICKNESS RANGE: .062 MAX.
- 11. STAINLESS STEEL SCREWS RECOMMENDED, BECAUSE OF CONTACT WITH SOLDER BATH.
- 12. HOLES TO BE TAPPED AFTER PLATING.
- 13. USE HARDWARE KIT 554818-2 FOR PART NUMBERS 553813-3 & 4. WHEN BAIL LOCK FEATURE IS REQUIRED.
- 14. THE BAIL LOCK FEATURE HAS APPLICATION FOR SMALL COMPUTER SYSTEMS INTERFACE (SCSI).



DETAIL C  
REAR PANEL MOUNTING DETAIL  
SHOWN FOR REFERENCE ONLY  
SCALE 4:1

.157 ± .015	.126 ± .003	4-40 UNC-2B	REVERSE	B	553813-4
.157 ± .015	.126 ± .003	4-40 UNC-2B	STANDARD	A	553813-3
DIM B	DIM A	SHIELD	ORIENTATION	DETAIL	PART NUMBER
THIS DRAWING IS A CONTROLLED DOCUMENT.					
DESIGNED BY	DRAWN BY	DATE	REVISED BY	DATE	REVISED
APPROVED BY	DATE	TYS Electronics Corporation Harrisburg, PA 17105-3608			
RECEPTACLE ASSEMBLY, SHIELDED, 50 POSITION, BAIL LOCK, RIGHT ANGLE, WITH GROUND BRACKET, CHAMP					
SIZE	DATE	ISSUE	REVISED	REWORKED	REWORKED TO
A1	00779	G=553813			
CUSTOMER DRAWING					