

4

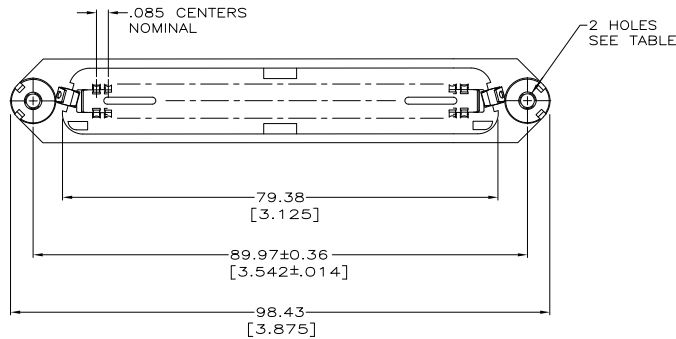
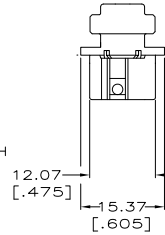
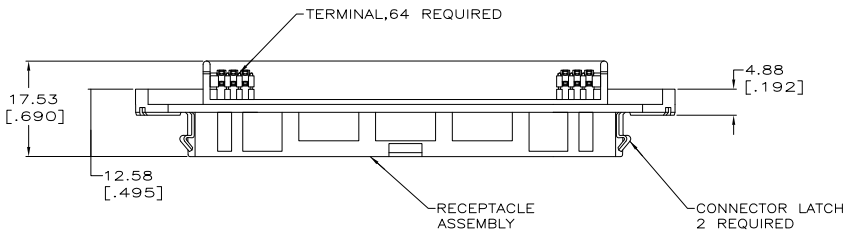
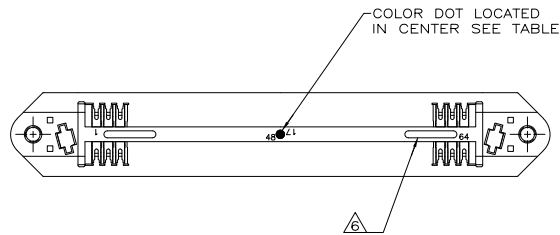
3

2

1

THIS DRAWING IS UNPUBLISHED. RELEASED FOR PUBLICATION.  
 © COPYRIGHT 2005 BY TYCO ELECTRONICS CORPORATION. ALL RIGHTS RESERVED.

LOC	DIST	REVISIONS					
GP	00	F	LNK	DESCRIPTION	DATE	BY	APPD
		B		REVISED PER ECO-08-007327	02OCT08	BM	WM



- ⚠ MATERIAL: HOUSING - POLYPHENYLENE OXIDE.  
 TERMINAL - HIGH STRENGTH COPPER ALLOY PLATED WITH 0.76 $\mu$ m [.000030] MIN GOLD OR GOLD FLASH OVER PALLADIUM NICKEL PLATE, 0.76 $\mu$ m [.000030] MIN TOTAL ON MATING SURFACE, OVER 1.27 $\mu$ m [.000050] MIN NICKEL PLATING.  
 LATCH - BRIGHT ZINC PLATED STEEL.
- 2. THE CONTACT SURFACES OF THE TERMINALS ARE COATED WITH LUBRICANT.
- ⚠ ALL DIMENSIONS SHOWN ARE MAXIMUM UNLESS OTHERWISE SPECIFIED.
- ⚠ WIRE SIZE: 24 & 26 AWG SOLID OR 24 AWG 7 STRANDS OF COPPER CONDUCTORS. MAXIMUM INSULATION DIAMETER OF .045 IS ACCEPTABLE FOR MOST APPLICATIONS.
- ⚠ WIRE SIZE: 22 AWG SOLID OR STRANDED COPPER CONDUCTORS. MAXIMUM INSULATION DIA. OF .056 IS ACCEPTABLE FOR MOST APPLICATIONS.
- ⚠ CORING MAY OR MAY NOT APPEAR AND IS AT THE DISCRETION OF AMP INCORPORATED.

$\emptyset$ .182 - $\emptyset$ .192	BLUE	B	4	BLACK	1-5554381-0
#4-40UNC-2B	BLUE	B	4	BLACK	5554381-2
HOLE SIZE	COLOR DOT	SLOT SIZE	COLOR	PART NUMBER	

THIS DRAWING IS A CONTROLLED DOCUMENT.		DWN G. PETERS 28SEP05		Tyco Electronics Corporation	
DIMENSIONS: mm [INCHES]		CHK W. MILLIHINES 28SEP05		Harrisburg, Pa 17105-3608	
TOLERANCES UNLESS OTHERWISE SPECIFIED:		APPD M. WALMSLEY 28SEP05		NAME	
0 PLG	± .005	PRODUCT SPEC		RECEPTACLE ASSEMBLY, 64 POSITION, INTEGRAL LACKING LATCH, THICK FLANGE, CHAMP-LOK	
1 PLG	± .005	APPLICATION SPEC		RESTRICTED TO	
2 PLG	± .005	WEIGHT		SIZE CASE CODE DRAWING NO	
3 PLG	± .005	MATERIAL		A2 00779 C=5554381	
4 PLG	± .005	FINISH		SCALE 2:1 SHEET 1 OF 1 REV B	
ANGLES	± .005	CUSTOMER DRAWING			

AMP 1471-9 REV 31MMR2000

5554381

A