

DESCRIPTION: 0.085 RIBBON - DIP SOLDER

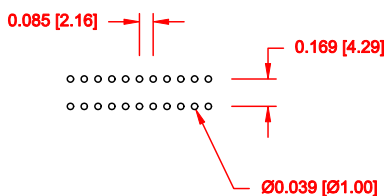
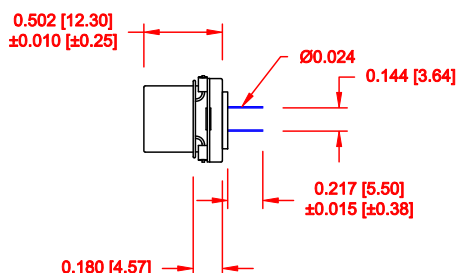
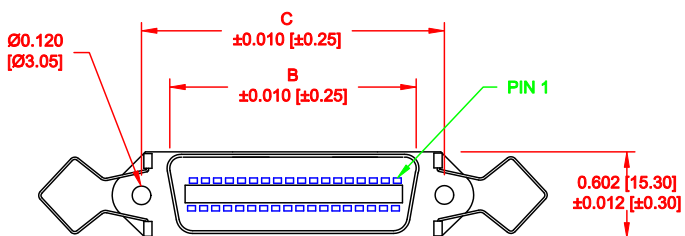
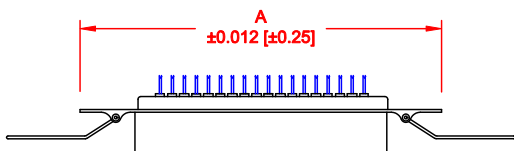
	014	024	036	050
A	1.728	2.154	2.667	3.264
	43.90	54.70	67.75	82.90
B	0.992	1.417	1.925	2.624
	25.20	36.00	48.90	64.10
C	1.417	1.843	2.352	2.947
	36.00	46.80	59.74	74.85

**MATERIAL:**

INSULATION: GLASS-FILLED THERMOPLASTIC  
 UL RATED 94V-0, 230°C PROCESS TEMP.  
 CONTACTS: COPPER ALLOY  
 SHELL: STEEL, NICKEL PLATED

**ELECTRICAL:**

CURRENT RATING: 5 AMPS  
 VOLTAGE RATING: 1,200V AC r.m.s.  
 INSULATION RESISTANCE: 1,000MegOhms Min. @ 500VDC  
 CONTACT RESISTANCE: 30MilliOhms Max.  
 OPERATING TEMPERATURE: -55°C TO +125°C



111-YYY-2 1 3 L 00 1

- SERIES: 111
- POSITIONS: YYY
- 014
- 024
- 036
- 050
- GENDER: 2 = FEMALE
- TERMINATION: 1 = DIP SOLDER
- RoHS COMPLIANT: L = LOW TEMP. PROCESS
- SHELL PLATING: 3 = NICKEL
- HARDWARE: 00 = NO HARDWARE
- PLATING: 1 = GOLD FLASH

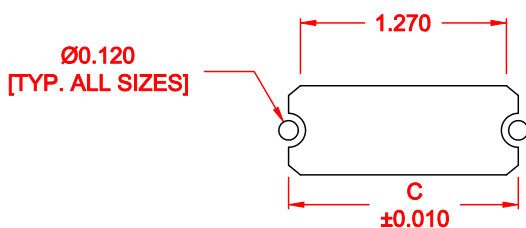
DO NOT SCALE FROM DRAWING

	THESE DRAWINGS AND SPECIFICATIONS ARE THE PROPERTY OF NorComp AND SHALL NOT BE REPRODUCED, COPIED OR USED AS THE BASIS FOR THE MANUFACTURE OF SALE OF APPARATUS WITHOUT WRITTEN PERMISSION.		DRAWN: WAYNE ROBBINS	DATE: 09-15-05
			CHECKED:	DATE:
NorComp		SCALE: NONE	SHEET 1 OF 2	REV 6
		DWG NO. 111-YYY-213L001		

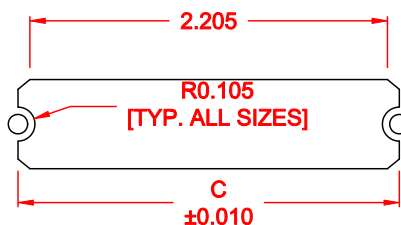
RoHS COMPLIANT

DESCRIPTION: 0.085 RIBBON - DIP SOLDER - BOARD CUTOUT

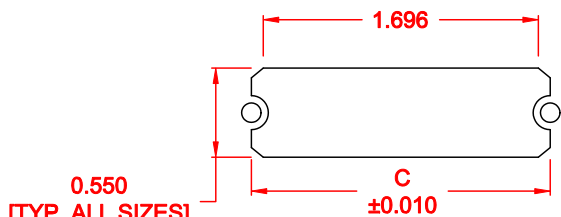
	014	024	036	050
C	1.417	1.843	2.352	2.947
	36.00	46.80	59.74	74.85



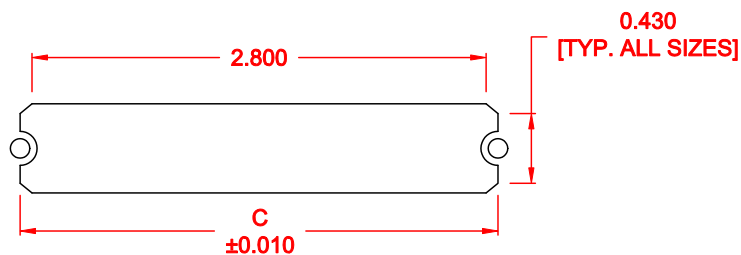
14 POSITION



36 POSITION



24 POSITION



50 POSITION

\*\*\*NOTE\*\*\*DIMENSION "C" =  
 CENTER TO CENTER OF MOUNTING HOLES  
 CENTER OF RADI  
 OVERALL LENGTH OF CUTOUT

DO NOT SCALE FROM DRAWING



THESE DRAWINGS AND SPECIFICATIONS ARE THE PROPERTY OF NorComp AND SHALL NOT BE REPRODUCED, COPIED OR USED AS THE BASIS FOR THE MANUFACTURE OF SALE OF APPARATUS WITHOUT WRITTEN PERMISSION.

DRAWN: M. SIGMON		DATE: 01-14-11	
CHECKED:		DATE:	
SCALE: NONE	SHEET 2	OF 2	REV 6
DWG NO. 111-YYY-213L001			

NorComp

RoHS COMPLIANT