

DESCRIPTION: 0.085 RIBBON - SOLDER CUP

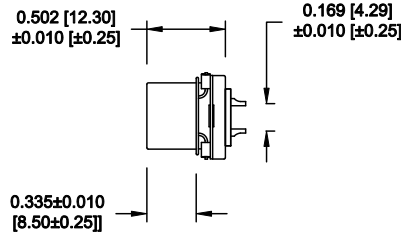
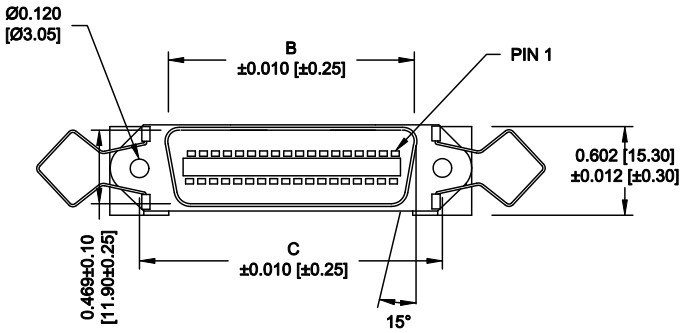
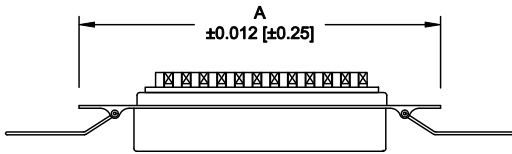
	014	024	036	050
A	1.728	2.154	2.667	3.264
	43.90	54.70	67.75	82.90
B	0.992	1.417	1.925	2.624
	25.20	36.00	48.90	64.10
C	1.417	1.843	2.352	2.947
	36.00	46.80	59.74	74.85

**MATERIAL:**

INSULATION: PBT - UL 94V-0 RATED  
 CONTACTS: PHOSPHOR BRONZE  
 SHELL: STEEL, NICKEL PLATED

**ELECTRICAL:**

CURRENT RATING: 1 AMPS  
 VOLTAGE RATING: 1,000V AC r.m.s.  
 INSULATION RESISTANCE: 1,000MegOhms Min. @ 500VDC  
 CONTACT RESISTANCE: 30MilliOhms Max.  
 OPERATING TEMPERATURE: -55°C TO +125°C



111-YYY-2 0 3 L 00 1

SERIES  
 POSITIONS  
 014  
 024  
 036  
 050  
 GENDER  
 2 = FEMALE  
 TERMINATION  
 0 = SOLDER CUP  
 SHELL PLATING  
 3 = NICKEL  
 RoHS COMPLIANT  
 L = LOW TEMP. PROCESS  
 HARDWARE  
 00 = NO HARDWARE  
 PLATING  
 1 = GOLD FLASH

WILL ACCEPT 26-20 AWG WIRE

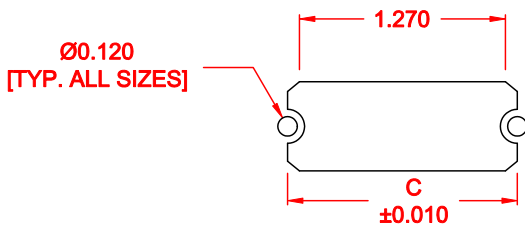
DO NOT SCALE FROM DRAWING

	THESE DRAWINGS AND SPECIFICATIONS ARE THE PROPERTY OF NorComp AND SHALL NOT BE REPRODUCED, COPIED OR USED AS THE BASIS FOR THE MANUFACTURE OF SALE OF APPARATUS WITHOUT WRITTEN PERMISSION.	DRAWN: <b>WAYNE ROBBINS</b>	DATE: <b>09-15-05</b>
		CHECKED:	DATE:
<h1>NorComp</h1>	SCALE: <b>NONE</b>	SHEET <b>1</b>	OF <b>2</b>
	DWG NO. <b>111-YYY-203L001</b>		

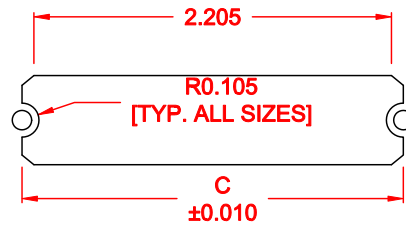
RoHS COMPLIANT

DESCRIPTION: 0.085 RIBBON - BOARD CUTOUT

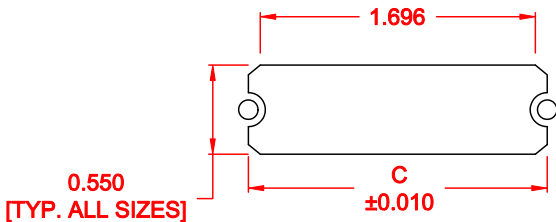
	014	024	036	050
C	1.417	1.843	2.352	2.947
	36.00	46.80	59.74	74.85



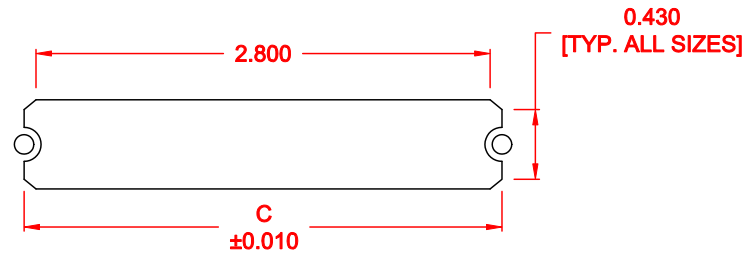
14 POSITION



36 POSITION



24 POSITION



50 POSITION

\*\*\*NOTE\*\*\*DIMENSION "C" =  
 CENTER TO CENTER OF MOUNTING HOLES  
 CENTER OF RADI  
 OVERALL LENGTH OF CUTOUT

DO NOT SCALE FROM DRAWING

	THESE DRAWINGS AND SPECIFICATIONS ARE THE PROPERTY OF NorComp AND SHALL NOT BE REPRODUCED, COPIED OR USED AS THE BASIS FOR THE MANUFACTURE OF SALE OF APPARATUS WITHOUT WRITTEN PERMISSION.		DRAWN: <b>M. SIGMON</b>	DATE: <b>01-14-11</b>
			CHECKED:	DATE:
<h1>NorComp</h1>		SCALE: <b>NONE</b>	SHEET <b>2</b>	OF <b>2</b>
		DWG. NO. <b>111-YYY-203L001</b>		

RoHS COMPLIANT