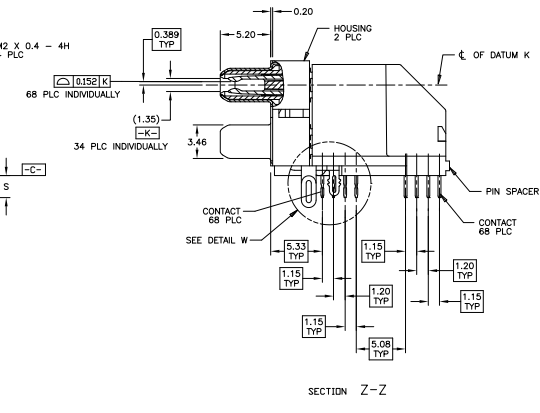
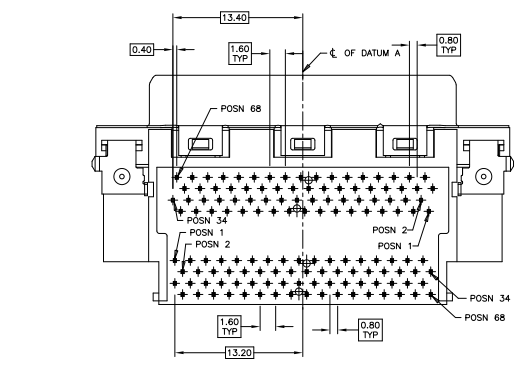
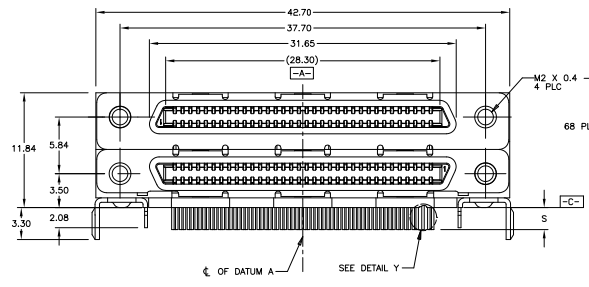
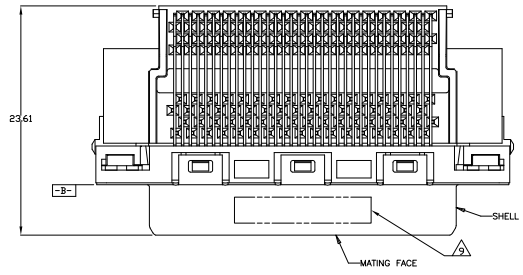
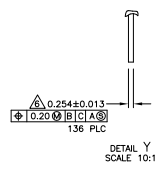
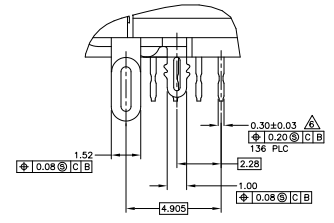


REV	DATE	DESCRIPTION	BY	CHK	APP
00					
01		REVISED PER ECO-09-001685			



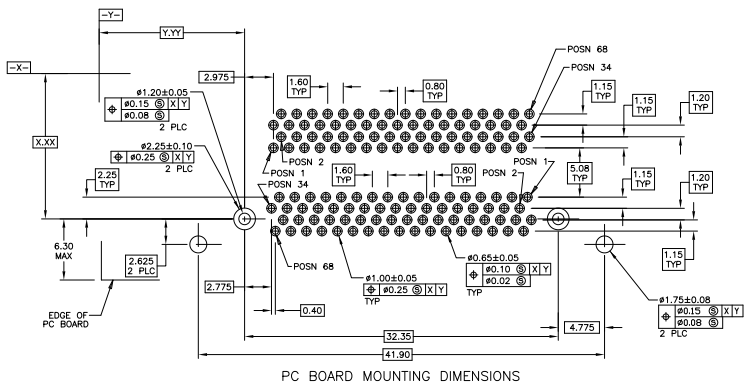
- △ MOLDED PARTS: THERMOPLASTIC, BLACK, UL 94V-0 RATED.
SHELL: CARBON STEEL.
CONTACTS: PHOSPHOR BRONZE.
BRACKETS: STEEL.
- △ SHELL: 5.08µm MIN NICKEL OVER 2.54µm MIN COPPER.
CONTACTS: 0.76µm MIN GOLD ON MATING END, 3.75µm MIN TIN ON
SOLDER TAILS, BOTH OVER 1.27µm MIN NICKEL OVER ENTIRE CONTACT.
BRACKETS: TIN PLATED.
- 3. CONTACTS DESIGNED FOR USE ON 1.60±0.15 THICK PC BOARD WITH
PLATED THRU MOUNTING HOLES.
- 4. RECEPTACLE ASSEMBLY DESIGNED FOR USE WITH 1.12±0.08 THICK PANEL.
- △ DATUMS AND DIMENSIONS ESTABLISHED BY CUSTOMER.
- △ POSITION TOLERANCE APPLIES AT CONTACT TIP ONLY.
- △ OFFSET DIMENSION APPLIES TO LOWER FOOTPRINT ONLY.
- △ CONTACTS DESIGNED FOR USE ON 2.35±0.15 THICK PC BOARD WITH
PLATED THRU MOUNTING HOLES.
- △ DATE CODE MARKED IN APPROXIMATE AREA SHOWN.



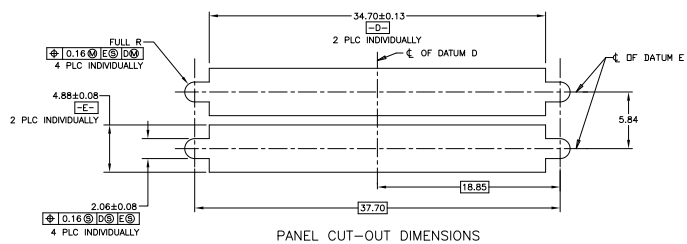
REVISIONS	DATE	BY	CHK	APP
3.55	5/787962-2			
2.27	5/787962-1			

DESIGNER	ENGINEER	DRAWN	CHECKED	DATE	DESCRIPTION
					RECEPTACLE ASSEMBLY, RIGHT ANGLE, 68 POS, STACKED, CHAMP 0.8mm
					108-1471-1
					114-6057
					007791C=5787962

REV	DATE	DESCRIPTION	BY	CHK	APP
00		SEE SHEET 1			



PC BOARD MOUNTING DIMENSIONS



PANEL CUT-OUT DIMENSIONS

THIS DRAWING IS A CONTROLLED DOCUMENT.		DATE	BY	CHK	APP
DATE	108-1471-1	114-6057			
DESCRIPTION	RECEPTACLE ASSEMBLY, RIGHT ANGLE, 68 POS, STACKED, CHAMP 0.8mm	CUSTOMER DRAWING			
REV	1	DATE	100779	REV	2