

4

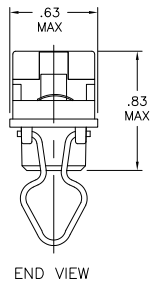
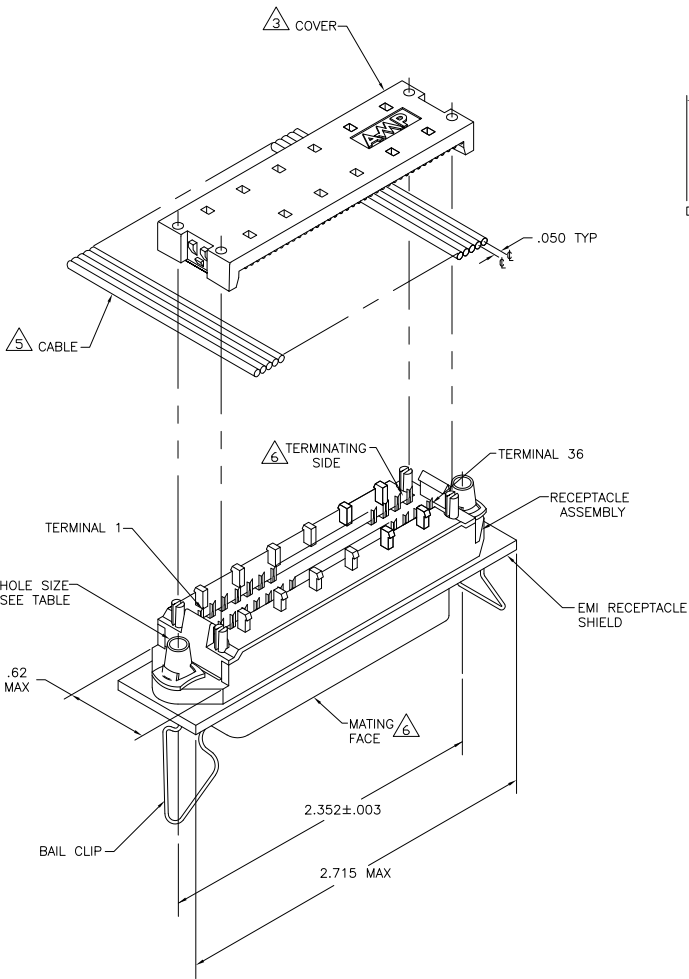
3

2

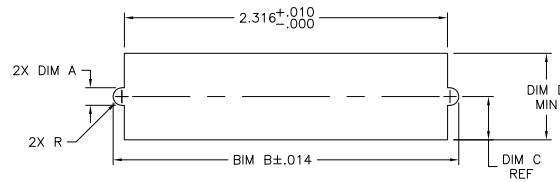
1

THIS DRAWING IS UNPUBLISHED. RELEASED FOR PUBLICATION  
 © COPYRIGHT BY TYCO ELECTRONICS CORPORATION. ALL RIGHTS RESERVED.

LOC	DIST	REVISIONS		
P	LTR	DESCRIPTION	DATE	BY
GP	00			
	B	REVISED PER ECO-08-007327	17APR08	BM WM



1. THE CONTACT SURFACES OF THE TERMINALS ARE COATED WITH LUBRICANT.
2. MATERIAL:  
 HOUSING & COVER: POLYPHENYLENE OXIDE (BLACK).  
 TERMINALS - PHOS BRONZE PLATED WITH EITHER .000030 MINIMUM GOLD PLATE OR GOLD FLASH OVER PALLADIUM NICKEL PLATE, .000030 MIN TOTAL ON MATING SURFACE. GOLD FLASH PLATED ON TERMINATING SIDE. .000050 MINIMUM NICKEL UNDERPLATE OVER ENTIRE TERMINAL.  
 EMI SHIELD: NICKEL PLATED DIE CASTING.  
 BAIL CLIPS: PASSIVATED STAINLESS STEEL.  
 HARDWARE: ZINC PLATED SPRING STEEL.
3. COVER SHOWN LOOSE BUT SHIPPED ASSEMBLED.
4. WIRE RANGE: 26 AWG SOLID THRU 30 AWG SOLID AND 28 AWG STRANDED RIBBON CABLE.
5. FLAT CABLE SHALL BE FURNISHED BY CUSTOMER.
6. MATING FACE CONSISTS OF TWO ROWS OF TERMINALS ON .085 CENTERS. TERMINATING SIDE CONSISTS OF TERMINALS ON .100 CENTERS FOR AN EFFECTIVE .050 TERMINATION.
7. PANEL THICKNESS RANGE: .062 MAX.
8. HOLES TO BE TAPPED AFTER PLATING.
9. FOR MORE INFORMATION REFER TO AMP PRODUCT SPEC 108-6076 & APPLICATION SPEC 114-6030.



△ SUGGESTED REAR PANEL MOUNTING CUTOUT DIMENSIONS

.620	.310	2.478	.126 ± .003	4-40 UNC-2B	5554346-2
DIM D	DIM C	DIM B	DIM A	SHIELD HOLE SIZE	PART NUMBER

THIS DRAWING IS A CONTROLLED DOCUMENT.		DR. S. MCMASTER 110CT05	Tyco Electronics Corporation	
DIMENSIONS: INCHES		CR. W. MILLIMETERS 110CT05	Harrisburg, PA 17105-3608	
OTHER DIMENSIONS: INCHES		APP. W. MILLIMETERS	NAME	
0 PLG ±		PRODUCT SPEC	EMI RECEPTACLE ASSEMBLY,	
1 PLG ±		APPLICATION SPEC	36 POSITION, LOW PROFILE, SHIELDED,	
2 PLG ±		WEIGHT	BAIL LOCK, CHAMP LATCH	
3 PLG ±		RESTRICTED TO	-	
4 PLG ±		CUSTOMER DRAWING	SCALE 2:1 SHEET 1 of 1 REV B	
ANGLES ±		SIZE	CASE CODE	
FINISH		A2	00779 C=5554346	

AMP 1471-9 REV 31MM2000

5554346

A