

4

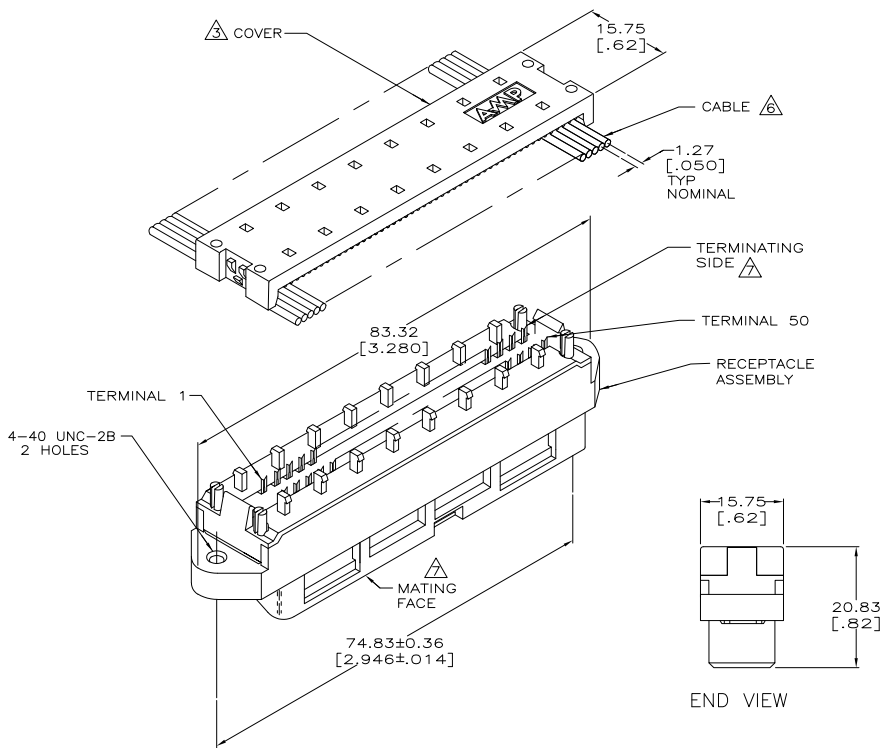
3

2

1

THIS DRAWING IS UNPUBLISHED. RELEASED FOR PUBLICATION
 BY TYCO ELECTRONICS CORPORATION. ALL RIGHTS RESERVED.

LOC	DIST	REVISIONS		
F	LNK	DESCRIPTION	DATE	BY
GP	00			
J		REVISED PER ECO-08-007327	17APROB	BM WM



1 THE CONTACT SURFACES OF THE TERMINALS ARE COATED WITH LUBRICANT.

2 MATERIAL:
 HOUSING AND COVER - THERMOPLASTIC (BLACK).
 TERMINALS - PHOS BRONZE PLATED WITH EITHER 0.76 μ m [.000030] MINIMUM GOLD PLATE OR GOLD FLASH OVER PALLADIUM NICKEL PLATE, 0.76 μ m [.000030] MIN TOTAL ON MATING SURFACE. GOLD FLASH PLATED ON TERMINATING SIDE. 1.27 μ m [.000050] MINIMUM NICKEL UNDERPLATE OVER ENTIRE TERMINAL.

3 COVER SHOWN LOOSE BUT SHIPPED ASSEMBLED.

4. WIRE RANGE: 26 AWG SOLID THRU 30 AWG AND 28 AWG STRANDED RIBBON CABLE.

5 ALL DIMENSIONS SHOWN ARE FOR REFERENCE ONLY UNLESS OTHERWISE SPECIFIED.

6 FLAT CABLE SHALL BE FURNISHED BY CUSTOMER.

7 MATING FACE CONSISTS OF TWO ROWS OF TERMINALS ON 2.16 [.085] CENTERS. TERMINATING SIDE CONSISTS OF TERMINALS ON 2.54 [.100] CENTERS FOR AN EFFECTIVE 1.27 [.050] TERMINATION.

8 ALL DIMENSIONS SHOWN ARE MAXIMUM UNLESS OTHERWISE SPECIFIED.

DIMENSIONS:		TOLERANCES UNLESS OTHERWISE SPECIFIED:		DATE		NAME	
mm	[INCHES]	PLC	FINISH	DATE	BY	DATE	BY
		0 PLC	△	12-20-93	K. TILLMAN/JTA	9-1-94	C. WHITT
		1 PLC	△				
		2 PLC	△				
		3 PLC	△				
		4 PLC	△				
		ANGLES	△				
		FINISH	△				

THIS DRAWING IS A CONTROLLED DOCUMENT.	DM	12-20-93	Tyco Electronics Corporation
	CHK	9-1-94	Harrisburg, PA 17105-3608
	C.	9-8-94	
	NAME		
	TRAMMEL		
	108-6076		
	APPLICATION SPEC		
	114-6030		
	HEIGHT		
	CUSTOMER DRAWING	SCALE	2:1
		SHEET	1 of 1
		REV	J

AMP 1471-9 REV 31MMR2000

553603

B

A