

4

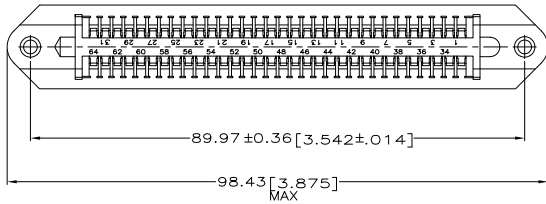
3

2

1

THIS DRAWING IS UNPUBLISHED. RELEASED FOR PUBLICATION. BY TYCO ELECTRONICS CORPORATION. ALL RIGHTS RESERVED.

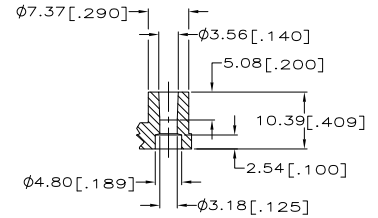
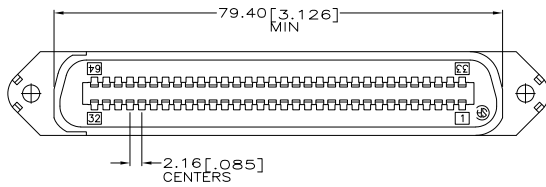
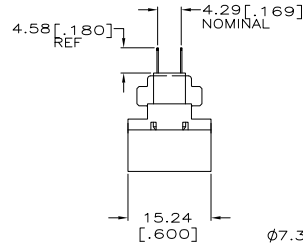
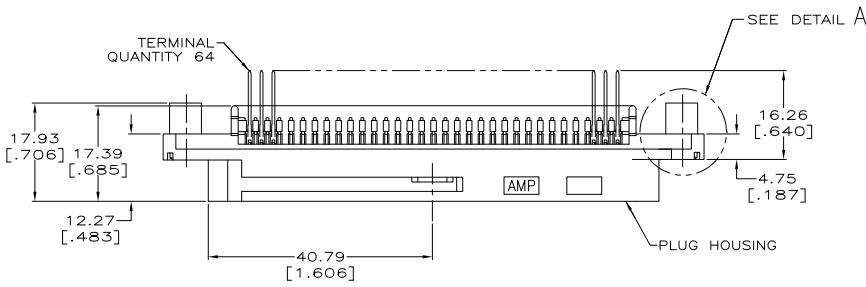
LOC	DIST	REVISIONS		
GP	00	F	LNK	DATE
		B	REVISED PER ECO-08-007327	22JUL08
				BM WM



1. THE CONTACT SURFACES OF THE TERMINALS ARE COATED WITH LUBRICANT.

ALL DIMENSIONS SHOWN ARE REFERENCE ONLY UNLESS OTHERWISE SPECIFIED.

MATERIAL: HOUSING - THERMOPLASTIC, BLACK. TERMINAL - PHOS BRONZE PLATED WITH EITHER 0.76µm [0.00030] MINIMUM GOLD PLATE OR GOLD FLASH OVER PALLADIUM NICKEL PLATE, 0.76µm [0.00030] MINIMUM TOTAL ON MATING SURFACE. 3.05µm [0.00120] MINIMUM TIN PLATE ON TAILS OVER 1.27µm [0.00050] MINIMUM NICKEL UNDERPLATE OVER ENTIRE TERMINAL.



DETAIL A

5552243-1 PART NUMBER

THIS DRAWING IS A CONTROLLED DOCUMENT.		DRN S. LATTUCA 12AJ005	Tyco Electronics Corporation	
DIMENSIONS: mm [INCHES]		CHK W. MILLHIMES 12AJ005	Harrisburg, PA 17105-3608	
TOLERANCES UNLESS OTHERWISE SPECIFIED:		APVD M. WALKMSLEY 12AJ005	NAME	
0 PLG	±	PRODUCT SPEC	PLUG ASSEMBLY,	
1 PLG	±	APPLICATION SPEC	64 POSITION, VERTICAL MOUNTING	
2 PLG	±	WEIGHT	(CHAMP-LOK WITH STANDOFFS)	
3 PLG	±	CUSTOMER DRAWING	SIZE	RESTRICTED TO
4 PLG	±		A2	
ANGLES	±		ONE CODE (DRAWING ID)	
FINISH	±		00779	
			C=5552243	
			SCALE	SHEET
			2:1	1 of 1
				REV B

AMP 1471-9 REV 31MM2000

5552243

A