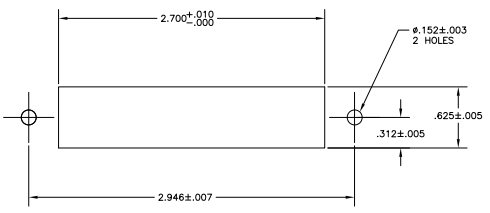
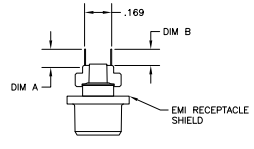
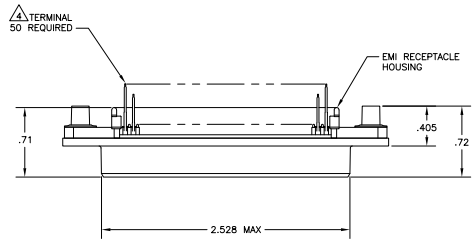
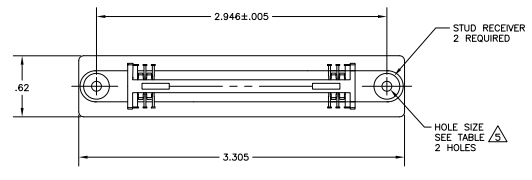


THIS DRAWING IS UNPUBLISHED. REPRODUCED FOR YOUR INFORMATION. ALL RIGHTS RESERVED.
 © 2008 BY TTI ELECTRONICS CORPORATION

REV	DATE	DESCRIPTION	BY	CHK
B	REVISED PER ECO-08-007327		BM	WM
B1	REVISED PER ECO-10-000444		TKM	HMR



- 1. THE CONTACT SURFACES OF THE TERMINALS ARE COATED WITH LUBRICANT.
- △ ALL DIMENSIONS SHOWN ARE FOR REFERENCE ONLY UNLESS OTHERWISE SPECIFIED.
- △ MATERIAL: HOUSING - THERMOPLASTIC, BLACK; TERMINAL - PHOS BRONZE PLATED WITH EITHER .000030 MINIMUM GOLD PLATE OR GOLD FLASH OVER PALLADIUM NICKEL PLATE, .000030 MINIMUM TOTAL ON MATING SURFACE, .000120 MINIMUM NICKEL PLATE ON TAILS OVER .000050 MINIMUM NICKEL UNDERPLATE OVER ENTIRE TERMINAL; STUD RECEIVER - STAINLESS STEEL; SHIELD - NICKEL PLATED DIE CASTING.
- △ CENTER-TO-CENTER SPACING OF TERMINALS IS .085.
- △ HOLES TO BE TAPPED AFTER PLATING.
- △ OBSOLETE PARTS: OBSOLETE CIS STREAMLINING PER D.RENAUD/D.SINISI

REV	DATE	DESCRIPTION	BY	CHK
A	00779	5554217		

REV	DATE	DESCRIPTION	BY	CHK
A	00779	5554217		

REV	DATE	DESCRIPTION	BY	CHK
A	00779	5554217		

REV	DATE	DESCRIPTION	BY	CHK
A	00779	5554217		